



BRILLIANT FROM ALL ANGLES

DEVELOPER : EcoWorld International
MAIN CONSTRUCTION COMPANY : Parkview Constructions
ARCHITECT : Woods Bagot
CONSTRUCTION VALUE : \$165 million

West Village is a landmark 40-level tower of 398 luxury apartments with custom luxury finishes including caesarstone benchtops, mirrored splash backs, Miele appliances, engineered floor boards, bathrooms with feature tapware, large balconies, a gorgeous rooftop entertainment deck with pocket parks, shelters, seating, grassy terraces and BBQ areas, plus an exotic ground floor retail and intimate alfresco dining precinct.

Parkview is an award-winning industry leader in the delivery of high quality living spaces. Over the last 10 years they have expanded their sector coverage, diversifying into large master planned communities, hotels, aged care, hospitality, commercial, industrial and education projects. Integrity, excellence and innovation characterise Parkview's approach to every project it undertakes.

Parkview constructed West Village, located in the heart of Parramatta's CBD. This landmark residential, retail and hospitality development for EcoWorld International was designed by Woods Bagot changing the face of Parramatta, providing 398 luxury apartments over one 40-storey tower and a second 7-storey tower. Apartments enjoy stunning views to the Sydney CBD, to the East and also the Blue Mountains to the West.

West Village has an impressive 5-level atrium in the main lobby to the largest tower. Communal rooftop gardens complete with BBQ facilities are provided on Level 40 and Level 7. The residential floors are complemented by retail and commercial spaces on lower levels. Residents will also enjoy a roof top music room and golf simulator room.

Parkview began their involvement with West Village in early 2017 when tendering started. The contract was executed July 2017 and work commenced in December 2017.

Completion is anticipated this year. "We are excited to be the builder of this iconic project," said Project Manager, Laurence Yenco. "West Village has an impressive and elegant natural concrete façade with vertical glass screens, delivering a striking new addition to Parramatta's skyline."

The central location of the West Village has brought its challenges during construction. "Located on the very busy corner of Church Street, Parkes Street and the Great Western Highway, with Westfield Parramatta in the vicinity, has created some restrictions on movements of personnel and materials. We have had to carefully plan all logistics," said Laurence.

Another challenge during construction was related to working at height, with safety being a number one priority on the 40-storey building. Façade works in particular were challenging, with moving workers and materials safely over the 40-storeys taking a considerable amount of time. Moving rubbish and waste material back down and

dealing with the environmental challenges like winds at high levels has also placed extra demands on the team.

"Fortunately we have a great deal of experience within Parkview to deal with issues like these," said Laurence. "At any one time we had 45 Parkview employees on the project, ranging from construction workers, plant operators, foremen, administrators to managers."

The Parkview team is renowned for taking pride in every project they undertake and West Village is no exception. The skilled management team provides an extensive multi-disciplinary background and experience in construction, engineering, architecture, project management, property development, investment and asset management. The company's business philosophy is to build long lasting relationships and exceptional projects with all clients and partners. "We are here for the long term, just like our buildings," said Laurence.

Parkview employs a three stage design management process incorporating early planning, construction, and finally completion and handover. This enables Parkview to value engineer the project and produce the best value design to ensure the smooth delivery of every project, on time and within budget.

Parkview continually strives to set new benchmarks in design and construction. Current major projects include The Orchards, a master planned community for Sekisui House Australia at Baulkham Hills, Sanctuary apartments at Wentworth Point also for Sekisui House Australia and Neue Apartments at Macquarie Park for COLI Australia.

For more information contact Parkview, Level 7, 60 Union Street, Pyrmont NSW 2009, phone 02 9506 1500, email enquiries@parkview.com.au, website www.parkview.com.au



Images this page by FRMEZ



Below Feenix made a visual impact on West Village, providing the glazed balustrades and aluminum balusters.

Feenix has been designing, manufacturing and installing high quality balustrades, louvres and screens since they were first established in 1992 in Sydney. They also have factory facilities in Burleigh Heads, Queensland, giving them the resources to service the demands of the construction industry on Australia's East Coast.

With an impressive portfolio of projects completed for some of the best known Tier 1 and Tier 2 builders in the country, Feenix was contracted by Parkview Constructions to design, manufacture and install façade requirements for the outstanding West Village residential and retail tower in Parramatta.

Feenix has made a major contribution to the visual impact of West Village through the design, manufacture and installation of aluminium balusters to the podium levels, glazed balustrades to the tower and louvres and screens to both the podium and tower.

The significant size of the louvres required special lifting equipment in the form of a large boom and crane to position them in place. The location of West Village on a major intersection in Parramatta meant scheduling the lifts with the boom at times that would minimise traffic disruption. Now in position, the louvres add an elegant and functional aspect to the exterior of the building.

Feenix specialises in designing and supplying a complete package for their clients so that balustrades can be complemented with aluminium fixed and sliding louvres, privacy screens, speciality louvered fencing or any other miscellaneous vents and screens required to complete façades. All elements are produced to the highest quality finish.

A testimony to Feenix's success is the fact that the company supplies and installs over 15km of high quality balustrades on average every year. The high level of demand is driven by the company's practice of fully fabricating to size, delivering to site and installing complete with protective plastic. Once installed, instant edge protection is created and the removal or jump of screens/scaffold can be done, reducing the build costs for the builder.

Feenix offers over 60 different aluminium extrusions to assist in creating the appearance that a client may require for their project. All products are manufactured from a reputable ISO 9001 quality certified supplier. The suppliers are approved Dulux and AkzoNobel/Interpon certified so that all powdercoating carries a 15 year warranty.

As well as aluminium products, Feenix also provides a range of stainless steel and mild steel glazed balustrades, often prescribed to create a visually appealing element in shopping centres and commercial spaces.

Feenix provides a complete project management package. With their internal resources of design, project management, an architect team and a highly experienced external engineer, Feenix can provide shop drawing development, fabrication, powdercoating through to onsite installation. It has a dedicated team on the factory floor managing the manufacturing processes including quality control and accuracy.

Recently completed projects which indicate the versatility of Feenix include the Wonderland development by Multiplex in Central Park, Chippendale in Sydney, where Feenix supplied and installed aluminium glazed balustrades, fixed batten screens, perforated mesh sliding screens and privacy screens. Feenix also worked alongside Multiplex on The Beach apartment tower in Broadbeach supplying and installing glazed balustrades, pool fencing, privacy louvres, mechanical room louvres and services louvre gates.

The expansion of The Star on the Gold Coast, built by Probuild and completed in 2018, saw Feenix supply and install aluminium glazed balustrades to external balconies.

The West Village project further enhances Feenix's reputation in the design, manufacture and installation of high quality, cost effective balustrades, louvres and screens.

For more information contact Feenix NSW, 7/53-57 Burrows Road, Alexandria NSW 2015, phone 02 9516 0100, email admin@feenix.com.au, website www.feenix.com.au

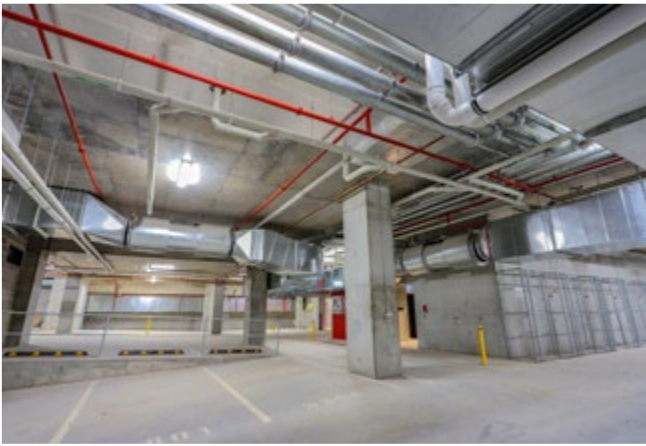
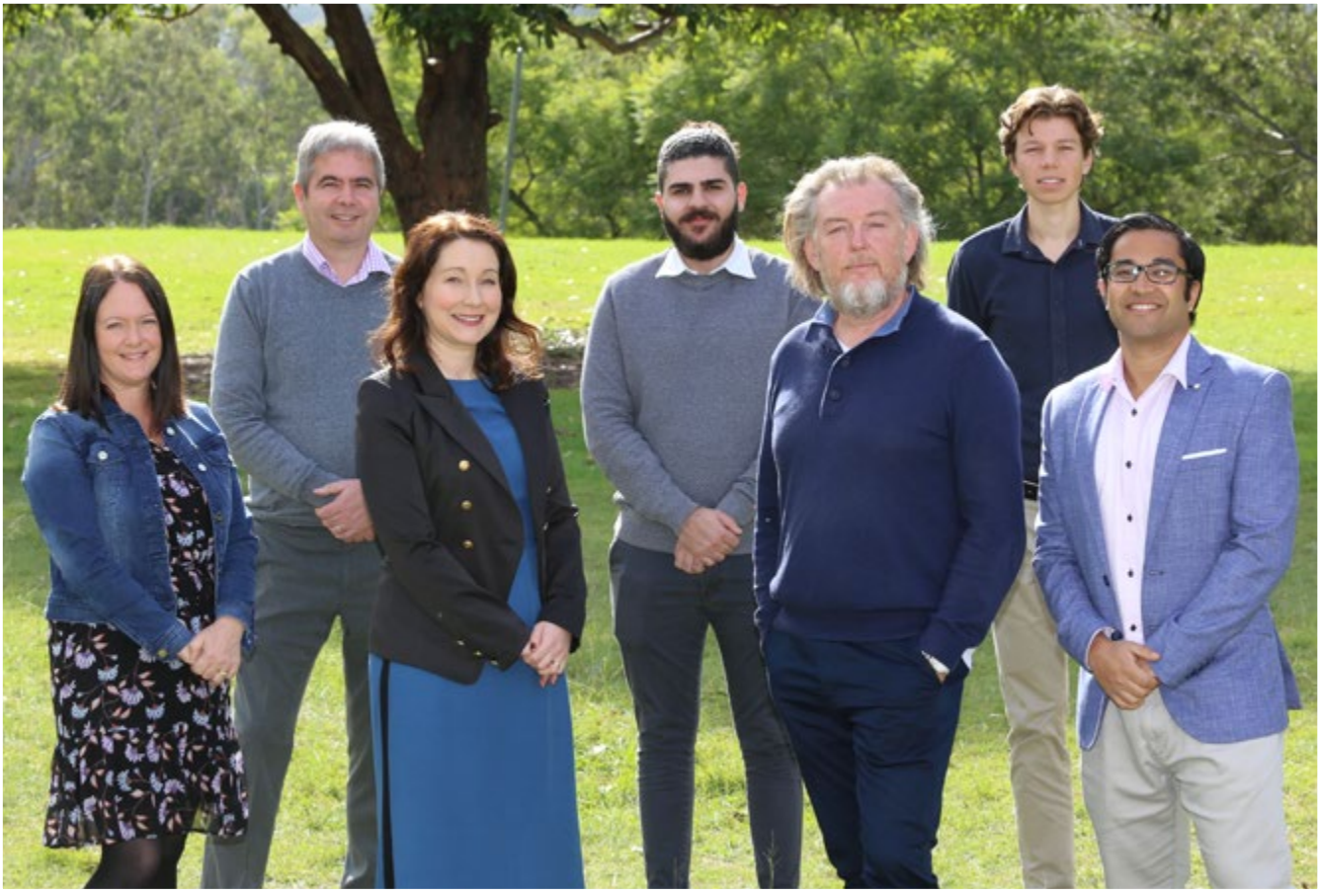


Image by FRMEZ

Below Think Planners were responsible for managing the approval process, achieving development consent.



Below Orion Mechanical Services supplied and installed Daikin ducted split VRV air conditioning throughout the project.



Town planning specialist, Think Planners, has a particular affinity with Western Sydney where it has significant, established connections and substantial experience. No surprise then when it was awarded the planning contract for the transformative West Village project in Parramatta.

West Village will create a new benchmark for apartment living in Parramatta, with elegant finishes, spectacular roof top views and access to popular alfresco restaurants on the retail level. Rail and bus connections are close by.

Director, Adam Byrnes said that Think Planners managed the entire approval process for West Village. “It was highly important that the design of the project met the highest standards of excellence for developers, EcoWorld International. Think Planners undertook the design development and achieved development consent for this outstanding building which will be a major contributor to Parramatta’s new skyline.”

Think Planner’s approach was to engage their senior practitioners on undertakings of the scale of West Village. Adam and his fellow Directors, Jonathon Wood and Schandel Fortu worked

on the project with the support of their Planning Manager, Brad Delapierre.

“We always work in close collaboration with our clients right through the planning process, assisting in shaping their project concepts, testing project potential and advising on design development,” said Adam. “Think Planners remained engaged with our West Village clients right through to approval of the development proposal.”

With 10 years experience and a team of nine, Think Planners has successfully delivered planning projects across many of Sydney’s local government areas.

They are currently involved in over a dozen high rise developments in the Parramatta CBD, and have a strong track record in delivering planning proposals and development approvals in places such as Granville, Penrith, Bankstown, Blacktown, The Hills, Hornsby and many more local government areas.

For more information contact Think Planners, May’s Hill Gate House, Great Western Highway, Parramatta NSW 2150, phone 02 9687 8899, email info@thinkplanners.com.au, website www.thinkplanners.com.au

Orion Mechanical Services has an outstanding reputation as a specialist in delivering customised HVAC solutions for commercial, residential, industrial and mixed use property projects. The company provides a complete design and construct service, encompassing documentation, services coordination, procurement, supply, installation, commissioning and service.

Orion Mechanical was engaged by Parkview on a design and construct contract to provide HVAC services to the project. Site Manager, Sajid Safadi said that an experienced team was assembled consisting of two designers, a project manager, one full time site manager, two project engineers, two foremen, nine installers and two apprentices.

Orion Mechanical designed, supplied and installed Daikin VRV-4S fully ducted air conditioning systems to all the apartments plus both tower and podium main entry lobbies. The basement carpark mechanical ventilation system includes a single large VSD driven Chicago Blower DWDI centrifugal exhaust fan plus three in-line axial carpark supply fans all controlled via a Carbon Monoxide Monitoring System connected to the BMS (Building Management System). The stair pressurisation system includes a reversible mechanical relief/outside air fan with motorised dampers on each level. Provisional commercial

kitchen exhaust duct risers were provided for all future retail tenancies. Mechanical ventilation systems were provided to all garbage rooms, plantrooms and the adjoining electrical substation.

The combined mechanical lobby relief and outside air system required the design and selection of a reversible 1,000mm diameter in-line axial fan with special consideration to the size of the fan, motor, blade selection and positioning. “We also had to ensure airtight installation of the ductwork system with the masonry riser, requiring a high level of coordination with the builder during installation to ensure quality and performance,” said Design Engineer, Ryan Boediman.

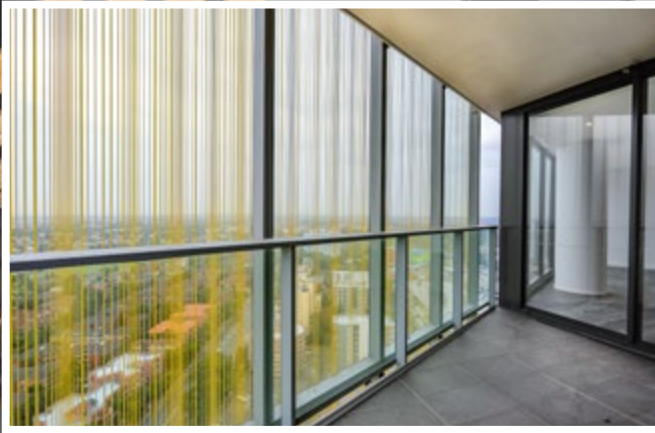
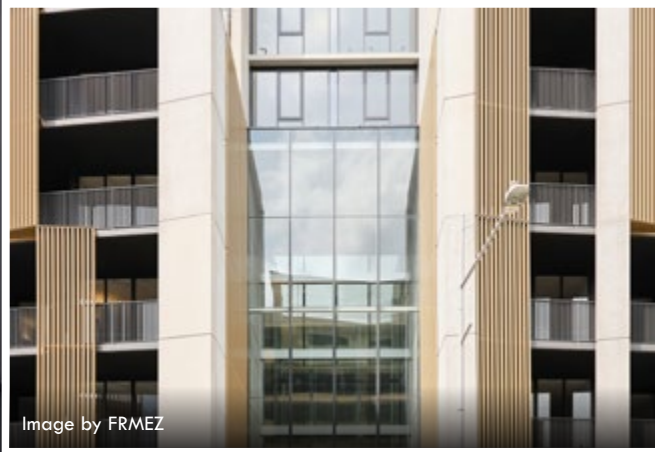
Orion Mechanical also worked on the Park One development at Macquarie Park for Icon. The company is currently working on the Sir Moses Montefiore retirement living project at Randwick for Richard Crookes Constructions, with Lendlease on the BaptistCare Fivedock project and also with Watpac on Romeciti’s luxury residential towers, NATURA, at Macquarie Park.

For more information contact Orion Mechanical Services, Unit 19, 198-222 Young Street, Waterloo NSW 2017, phone 02 9669 1404, email info@orionmechanical.com.au, website www.orionmechanical.com.au

Below CHERIO Civil Works provided civil services, including kerbing, line marking, tree planting and drainage.



Below G. James Facade Solutions supplied and installed all the aluminum windows, feature glazing and glass privacy screens.



CHERIO Civil Works is founded on the belief that workmanship and quality should never be compromised. As a unified team they are able to achieve this through their attention to detail, experience and professional approach.

CHERIO provided both internal and external civil works for the West Village project, including the public domain and roadworks. In addition to the civil works, CHERIO also provided kerbing, drainage, tree planting (including strata vaults), linemarking and street furniture encompassed in the scope of works.

Given the busy CBD location, traffic and pedestrian management had been a key consideration. Similarly, working on underground services required a critical focus on timing, traffic management and safety. CHERIO Civil Works' experience in working in this type of environment has been invaluable and their ability to liaise with both Parramatta Council and the client prove to be the difference. Their full time staff were fully engaged throughout the project as the level of difficulty exponentially heightened as the works continued to progress.

CHERIO holds RMS prequalification status. Their area of expertise includes road and bridge works, demolition, excavation, storm water

drainage including GPIs, light and heavy duty concreting, landscaping, linemarking, street furniture works and any public domain related works in general.

CHERIO has recently completed a major contract at Macquarie Park Village in Sydney where they delivered the public domain works including traffic and pedestrian control measures, night and day shift teams, demolition and earthworks, drainage, subgrade preparation works, managing service authorities (Optus/Vocus/TPG/Telstra/Ausgrid), kerb and gutters, concrete and paved footpaths and landscaping. A challenge on the project was the construction of the main entry cobblestone driveway as the works had to be completed out of hours, but access still given to all residents.

CHERIO prides themselves on providing an excellent service, bringing projects to completion to the required quality, absolutely on time and on budget. As a result, they enjoy a large amount of repeat business from their satisfied clients.

For more information contact CHERIO Civil Works, 2015 9/23 Garema Circuit, Kingsgrove NSW 2208, phone 02 9758 2622, email admin@cheriocivil.com.au, website www.cheriocivil.com.au

The G. James Group is a family owned manufacturing business which has proudly specialised in the Australian based production of aluminium windows and doors, building façades, processed glass and aluminium extrusions for over 40 years.

West Village was a major undertaking for the G. James Facade Solutions division, supplying and installing all aluminium windows and sliding doors (some of which specified disabled access) as well as several shopfronts. The project also required some specialty elements which included feature glazing for the main entry, glazed canopies and stripe screen printed, heat strengthened laminated glass privacy screens.

Most of the installation was completed within the 5-floor high formwork and access screen system which jumped two floors every two weeks. This system required close coordination and commitment from all trades, providing an efficient and safe method of installation. Installation of the curtain wall's full height panels from behind the screens required some unique solutions. "We also had to have flexibility in our delivery schedule and overcome access challenges in a very busy CBD location. With all materials and fabrication completed inhouse or locally sourced we were able to lead the façade works," said Sydney Branch Manager, Mark Sandblom.

All aluminium was extruded and surface finished in Australia by G. James' extrusion division while the glass incorporated in West Village was processed and supplied by the G. James Glass Products Division. Fabrication of the aluminium joinery was a task undertaken by G. James Facade Solutions, sourcing product from both their Sydney and Brisbane factories. "G. James is proud to support and foster Australian made products and local manufacturing," Mark said. "The project provided assignment for 15 factory workers, with 12 installers regularly onsite."

G. James Facade Solutions undertakes projects ranging from large monumental assignments to smaller custom jobs, some of which have achieved prestigious architectural design and industry awards. Of note, is G. James' work on Sydney's UTS Central Podium project which saw them awarded the 2019 Australian Glass & Window Association National Design Award for the Best Use of Glass & Glazing. Other recent major residential projects include Central Park Duo, Marrick & Co for Mirvac and Macquarie Park Village. Commercial projects include No. 1 Bligh Street and the UTS engineering building.

For more information contact G. James Facade Solutions, 26 Long Street, Smithfield NSW 2164, phone 02 9732 2452, email sydney_commercial@gjames.com.au, website www.gjames.com