

# VUT EXERCISE & SPORTS PRECINCT

**HANSEN YUNCKEN**  
25 Huntingdale Road  
Burwood VIC 3125  
t. 03 9831 6500  
f. 03 9831 6599

**MAIN CONSTRUCTION COMPANY :** Hansen Yuncken  
**DEVELOPER / CLIENT :** Victoria University  
**PROJECT END VALUE :** \$64 Million  
**COMPLETION :** January 2011  
**ARCHITECTS :** John Wardle Architects  
**STRUCTURAL ENGINEER :** Aurecon  
**SERVICES ENGINEER :** Norman Disney & Young

## HANSEN YUNCKEN - CREATING THE NEW FACE OF VICTORIA UNIVERSITY

**H**ansen Yuncken is one of Australia's largest privately owned construction companies, with more than 800 staff and an annual turnover of approximately \$1.2 billion.

Since their establishment in 1918, Hansen Yuncken have completed over 4,500 projects for a range of clients and continue to remain at the forefront of change and innovation in the construction industry, building on their reputation through the development and application of new technologies, construction techniques and project delivery methods.

Given their extensive expertise and industry knowledge, Hansen Yuncken were also the builders for the Victoria University Learning Commons and Exercise Science and Sports Precinct (LC & ESSP) Project. This \$64 million building development, which faces Maribyrnong River, incorporates a new state-of-the-art sports, science and learning commons area, as well as the refurbishment of an existing building library and workspaces, including Levels 1-4.

The entire Project will eventually encompass 1,300 learning spaces, seven large-scale collaborative teaching spaces and a suite of

world class, high technology laboratories in five major disciplines underpinning Sport and Exercise Sciences.

With a 27-month Project timeframe, commencing in September 2008, and involving the sequencing and handover of six separate stages, Hansen Yuncken were committed to employing a dedicated and professional team of around 25-30 workers onsite. The on site labour work force peaked at around 160-170 at any one time and a total of 1900 inductions were undertaken during the course of the project.

Peter Carnell, Project Manager of the Victoria University LC & ESSP, said that throughout their involvement on the development, Hansen Yuncken had used a number of exciting new products for the building.

"While carrying out the installation of the facades of the building, we clad the Northern façade in coloured zinc and rimex panels, which not only reflect the light, but also change colour depending on the aspect of the sun," Mr Carnell said.

"The façade also included two, separate sunshades per floor of folded zinc panels, highlight windows, opened by actuators to

supplement the building's air-conditioning, as well as high performance, ultra-clear, double glazed glass," he said. A range of 'Running Man' moulded precast panels, manufactured in South Australia, were also used on the eastern wing and rear of the building.

"These Running Man panels are imprinted with a pattern of a man running through a finish line, which is quite a fitting print for a sports building," Mr Carnell said.

"This pattern was also repeated on the terrace façade, adjoining the existing building with the Running Man frit, thus creating the signature of famous sports scientist, JD MacDonald," he said. This particular style is essentially a ceramic that is baked into the centre of the glass, which is also a double glazed unit, with a high solar shading coefficient.

Hansen Yuncken was also responsible for a number of internal features of the Learning Commons development, which incorporated the Altitude Hotel, a unique building capable of simulating an altitude of 3,300 metres and sleeping facilities for 16 athletes in four, individually temperature controlled bedrooms.

"The professional Hansen Yuncken team also built a Heat Chamber that can generate temperatures from minus 33 to 55 degrees, as well as an Environmental Exercise Laboratory, capable of creating temperatures between five and 40 degrees," Mr Carnell said. "We also developed a Biomechanics Laboratory with 10 metre ceilings, sports flooring, high speed cameras, floor force plates, an overhead adjustable height lighting gantry, dividing sports curtains and surround AV sound and projectors," he said.

Although many features of the project were custom designed and complicated to develop (including the seraphic frit, high performance glass), as a result of Hansen Yuncken's extensive industry expertise and Project commitment, they were able to complete their responsibilities, regardless of the complex laboratory design and time schedule requirements.

"Despite the fact this has been a complex project at times, Hansen Yuncken has been successful in delivering a world class product for the Victoria University," Mr Carnell said.





**VUT Exercise & Sports Precinct, VIC**





## ALL FITTED OUT

**D**CI Shopfitting provides complete quality shopfitting, joinery and project management services across Australia. Utilising the latest software and manufacturing technology, DCI Shopfitting is able to support large-scale rollouts, while maintaining high quality finishes.

Given their extensive expertise in the industry, DCI Shopfitting can manage projects from concept to completion for a wide range of clients, including retail chains and outlets, office fit-outs, major department stores, cafes and restaurants.

Offering a range of services, including on-site Project Management, installation and design, DCI Shopfitting ensure projects are delivered within the required timeframes.

Using cutting-edge software and automated machinery, DCI Shopfitting manufacture all of their joinery in-house, ensuring high quality workmanship and adherence to project completion deadlines, regardless of the size of the job.

Given their extensive industry experience, DCI Shopfitting have been responsible for manufacturing and installing all of the joinery and metal work at the Victorian University of Technology's (VUT) Exercise and Sports Precinct.

This \$62.5 million project when completed will consist of 1300 learning spaces, seven large-scale collaborative teaching spaces, all offering contrasting interior landscapes and next-generation facilities.

In addition, there will be construction and alteration of approximately 19,000m<sup>2</sup> of the VUT's teaching facility, incorporating a further three levels of basement, Levels 1,2,3 and 4 including finishes, services and external works.

With 25 employees from DCI Shopfitting involved since 2009, the VUT Exercise and Sports Precinct is now in the final stage of completion, with three quarters of the joinery already successfully supplied and installed.

With an extensive array of knowledge and experience in analysing requirements, tendering and delivering large-scale joinery packages, the team from DCI Shopfitting were able to deliver quality service and products, ensuring the major construction company, Hansen Yuncken, were satisfied.

Given the joinery design requirements, the experienced team at DCI Shopfitting needed to manufacture an extensive amount of stacked ply. This was made from ply that was ripped, stacked and then made into custom-designed sheets, which ensured the VUT precinct project was both aesthetically pleasing and of a high standard of quality.

Director of DCI Shopfitting, Steve Dawson, said that the final stages of installation had been met with a number of obstacles whilst working on the VUT Exercise and Sports Precinct project.

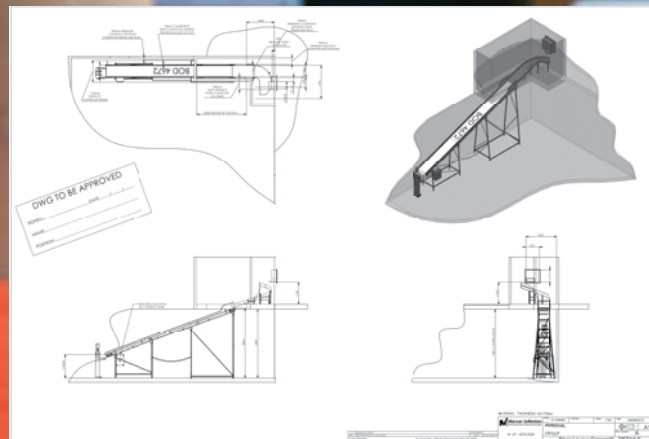
"As we have been responsible for all of the joinery and metal work of the Precinct, we have met a few challenges in Stage Six. Although we have managed to adhere to tight project completion deadlines," Mr Dawson said.

"This is the result of all of the other contractors working together as efficiently as possible to ensure the next stage of the building will be ready for us to deliver the final stages of required joinery and metal work," he said.

At the end of the day, DCI Shopfitting do what they do best - that is taking the architects concepts and making them a reality. Despite this being challenging at times, it is without a doubt that the team from DCI Shopfitting will be able to translate your architectural vision into something physically sound.

**DCI SHOPFITTING**  
37 Healey Road  
Dandenong South VIC 3175  
p. 03 9768 2194  
f. 03 9768 2195  
e. [accounts@dcigroup.com.au](mailto:accounts@dcigroup.com.au)  
[www.dcigroup.com.au](http://www.dcigroup.com.au)





## THE QLS GROUP - LIBERATING LIBRARIANS

The QLS Group Incorporating: Queensland Library Supplies Pty Ltd, VIC Library Supplies and QLS Technology, is a Privately Owned & Operated, 31 year old, Australian, specialist Library equipment supplier.

The QLS Group has a reputation for providing innovative, cost effective products & solutions for Libraries

The QLS Group operates their own Cabinet Making and Light Steel Fabrication Workshops and manufactures over 75% of our Furniture and Steel Goods.

This allows the costs to our clients to be kept to a minimum while also maintaining the flexibility to customize products for our clients, often with little or no cost increase

Our range of Library Equipment includes but is not limited to Shelving, End Panels, Chairs, Tables, Computer Desks/Benches, Circulation Desks, Children's Display Furniture, Book Covering & Processing Materials, Bag/Port Racks, Lockers, Display Cabinets

as well as Automation Products such as Patron Self Loan Units or Security Gates (EM/Rfid/Hybrid) and right up to a fully Automated Returns and Sorting systems, such as the 5 Bin Hybrid System at the University of Melbourne – Eastern Resource Centre OR the customized Controlled Access Chute with Spiral Slide and Electronic Returns Bin at Victoria University (As shown in the above images).

The QLS Group even offers a Collection Relocation/Removal Service for those re-carpeting or for those moving from one building to another. You can therefore be confident that in choosing The QLS Group, that you are partnered with a Manufacturing Supplier, that can meet all of your current needs whilst providing a path for future expansion and growth.

**QUEENSLAND LIBRARY SUPPLIES**  
38 Love Street  
Bulimba QLD 4171  
t. 07 3899 1899  
f. 07 3899 0844  
www.qls.net.au

**VIC LIBRARY SUPPLIES**  
Unit 22/200 Canterbury Rd  
Baywater VIC 3153  
t. 03 9722 7170  
f. 03 9722 7167  
www.qls.net.au

## MOVING PEOPLE SAFELY & EFFICIENTLY

Creative multi level building designs demand a creative approach to moving people throughout their space. Liftronic, the largest Australian owned and operated Lift and Escalator Company uses it's 25 years of experience in the market to supply a range of vertical transport options for its clients.

Liftronic were proud to have been chosen as the designers, suppliers and installers of the Lifts at Victorian University.

Liftronic installed a total of 3 lifts within this project and also completed a Modernisation upgrade.

Working amongst the general public together with building works created the largest obstacle. Liftronic worked closely with the builders and architects to ensure the day to day running of the Uni was not compromised.

Liftronic not only offers a large range of standard and customised lift and escalator products but also provides high quality modernisation and service.

Fine examples of Liftronic's product range may be seen in many major shopping centres, bulky goods developments, museums, and railways stations across Australia.

At Liftronic we aim to provide the most efficient method of transportation within an entire building.

Liftronic design lift systems that:

- Enhance Building Design and Efficiency
- Are of the Latest in Design & Technology
- Compliment Building Architecture and Aesthetics
- Are Safe, Fast, Efficient and Reliable
- Comply with relevant Australian Standards

**LIFTRONIC PTY LTD**  
t. 1800 663 922  
e. saleseng@liftronic.com.au  
www.liftronic.com.au