



A HUB OF EQUALITY

DEVELOPER : Victorian Pride Centre Pty Ltd
MAIN CONSTRUCTION COMPANY : Hansen Yuncken Pty Ltd
ARCHITECTS : Grant Amon Architects & Brearley Architects + Urbanists
CONSTRUCTION VALUE : \$36 million

The Victorian Pride Centre marks incredible social progress and is one of the largest in the world at 5-storeys and over 6,000m² of floor space. This architecturally impressive development is a safe, inclusive and vibrant LGBTIQ+ hub – a destination where the public, community groups and over 40 organisations can connect, share, support and engage.

The Victorian Pride Centre is an impressive development of curved and linear forms that create a dynamic and sculptural building. The building is a safe, inclusive hub for the LGBTIQ+ and wider community, as well as over 40 organisations to connect, share, support and engage.

“The design competition for the Centre recognised that ‘normal architecture’ wasn’t enough. The building had to acknowledge, embrace and encourage diversity,” said Operations Manager, Brian McAdam. “From a field of 18 entries, Grant Amon Architects and Brearley Architects and Urbanists won the competition for the Centre. Hansen Yuncken saw the opportunity to be part of a building of significance for the LGBTIQ+ community, as well as the people of St Kilda.”

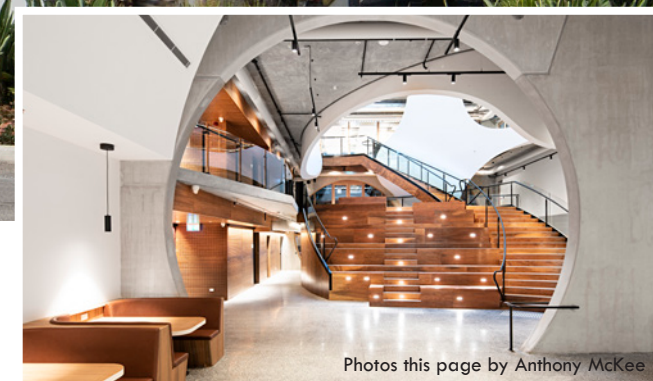
The building addresses the urban character of Fitzroy Street, extending an arcade over the footpath and retreating to the south with a variety of terraces and arches. The design ensures light and views from floors overlooking any future development, allows solar access and preserves existing trees. Inside is over 6,000m² of floor space spread across

5-storeys that capture sun through beautifully shaped circular and elliptical windows, and direct light via the smooth oval atrium.

Hansen Yuncken were awarded the D&C contract which included demolition of the existing structure, a new building and integrated fitout for a cinema, library and a rooftop garden. Tenant fitouts included health services for Star Health and Thorne Harbour Health as well as JOY radio with studios isolated from the slab and acoustically insulated.

Onsite work started in late 2019 and the unique architecture of the Centre presented challenges at every stage. “The project was one of constant problem solving,” said Brian. “Conceptually the building is a solid that has been cored out east west as well as from the top down. It makes interesting forms that work for the function of the building as well as creating a beautiful aesthetic.”

The structure uses concrete in its many forms in situ, precast and Glass Reinforced Concrete (GRC) skins to construct 17 different arched shapes. To construct the 3D façade each trade had to provide



Photos this page by Anthony McKee



layout drawings of their installation and Hansen Yuncken coordinated the successful interface between them.

“The building fabric was made up of seven layers including structural and secondary steel, aluminium extrusions and cladding panels. There were 1,100 aluminium cladding panels, all curved in two dimensions, of different shapes and sizes. We had to match colours, with products from overseas, and it’s important to match the right people with different tasks,” added Brian.

“Installing the ‘eggshell’ feature in the atrium was challenging. The 18m high GRC sculpture arrived as 34 pieces which were bolted together. The shape reflects the architectural forms of the building and is actually bisected horizontally by the fire curtain. This shows how practicalities and building regulations can be satisfied while still maintaining an aesthetic.”

The curved ceilings were made from troweling the finish direct to an engineered insulation – a stiffer and denser product from Germany with acoustic properties. It’s used in Dubai, on the curved ceilings of

mosques. Another special product used was silvertop ash for cladding the offices. Harvested in Gippsland and repurposed as feature timber panelling, it was cut with precision at the mill so that when it arrived onsite, it split like a chocolate orange, revealing rough sawn weatherboards.

Onsite completion was achieved in April 2021. “It takes a long time to get a building finished these days with many procedures to go through,” added Brian.

Previous projects for Hansen Yuncken include major projects such as the spectacular \$230 million SKYCity Adelaide Casino Redevelopment, through to low bono and pro bono projects such as the Harris Transportable Housing Project for Launch Housing, comprised of 14 low cost prefabricated houses situated across multiple inner city locations, to help combat homelessness.

For more information contact Hansen Yuncken, Level 10, 412 St Kilda Road, Melbourne VIC 3004, phone 03 9831 6500, email melbourne@hansenyuncken.com.au, website www.hansenyuncken.com.au

Below Bravo Plasters fitted a variety of internal linings throughout the Victorian Pride Centre.

Bravo Plasters are a dedicated team of professionals with years of experience providing quality plaster finishes and stylish timber linings for interior walls, floors and features.

At the Victorian Pride Centre, Bravo Plasters had an especially challenging job, characteristic of the building is the myriad curves and angles of the walls. The sculpted interior volumes needed some skilled carpentry and plasterwork to showcase the beauty of the unfolding spaces.

“Our contract with Hansen Yuncken started in May 2020,” said Director, Xinling Ji. “The job wasn’t an especially large scale one for us, but it was unique. As a busy plastering company we work across a range of sectors however the Pride Centre was a new and interesting project for us.”

“We fitted many different types of linings including Blackbutt, Spotted Gum and Silver Top Ash wall cladding as well as cork and perforated timber for the ceilings,” explained Managing Director, Tong Ying Ji. “We installed timber flooring to the steel framed staircase in the auditorium and we spent some time adjusting the timber thicknesses to get the levels right. We also built the timber frame and lining for the bookshelf under the stairs. The plasterwork was varied with the each level receiving a different treatment. We installed a perforated plaster ceiling, acoustic tiled ceilings and some custom acoustic treatments on ceilings and walls for sound insulation.”

“The challenge of the job was that most of areas are shaped and curved in different dimensions and we needed to design the fitout,” said Site Foreman and Technical Manager, Yuhong Wang. “Some of the materials we used were hard straight boards that be had to bend without damage. We succeeded at producing a high quality job.”

“The most important step of this job was designing the installation and this was done by our experienced workers, an architect

and a structural engineer, both with a background of working in China,” explained Tong Ying.

The job included fitting a new product, Fade Insulated Plasterboard, engineered in Denmark and used extensively overseas to reduce noise levels within public spaces. The ceilings on the ground floor were lined and finished using this new system which comprises acoustically insulated lining boards that can be curved and shaped and also combined with an applied plaster finish.

Despite the impact of COVID-19 restrictions, Bravo Plasters had 30 installers working continuously onsite and had the job completed by the end of May 2021.

“It was a very hard time for everybody during COVID-19 and I would like to thank all of my workers, who all stayed with us on the job at Bravo Plasters, throughout 2020 and afterwards,” added Xinling.

“The Victorian Pride Centre was our first job with Hansen Yuncken and we are honoured to be working with the 100 year old company. We now have another job with them, plasterwork at a development called Industry Lanes, three interconnected buildings of retail and commercial space at Richmond in Melbourne. We hope to join with Hansen Yuncken in future projects and continue to grow this valuable working relationship.”

Established in 2002, Bravo Plasters’ team of installers are ready for work on large scale interior fitouts and plasterwork projects. Based in the CBD, Bravo Plasters work across the Melbourne metropolitan area as well as regional Victoria.

“We supply plastering and lining services for large commercial developments as well as for smaller scale projects,” said Tong Ying. “We’ve completed domestic jobs, retail and high rise apartments.”

For more information contact Bravo Plasters, phone 0402 471 811

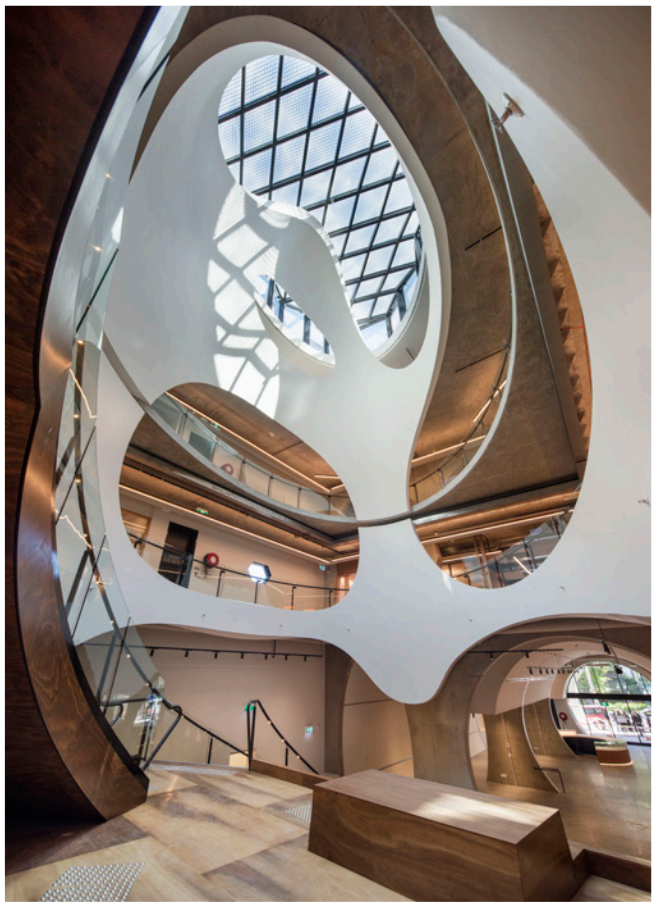




Victorian Pride Centre, Victoria

Below Able Industrial Floors Pty Ltd polished 3,000m² of concrete floors throughout the project.

Below ShapeShift Design Technologies designed and manufactured the 'egg' with specifically developed ShapeShell-RT.



The team at Able Industrial Floors Pty Ltd are experts in providing polished concrete surfaces and applying attractive hard wearing epoxy and urethane coatings to concrete floors. In business for over 30 years, Able is a family company owned by brothers Andrew and Stuart Theakstone, working across the industrial, commercial and residential sectors.

In February 2020, Able started onsite work at the Victorian Pride Centre. "We polished up to 3,000m² of concrete floors across the 5-levels of the building," said Andrew. "The job went very well and with four workers onsite we completed the work by early May 2021. Able has been working for Hansen Yuncken for over 35 years and we find them very easy to work with. The staff do as much as they can to streamline the onsite work so everything runs smoothly, they are well organised."

Previous work for Hansen Yuncken includes the application of epoxy roll coats, coving and linemarking to a 2,000m² area at the new Amart Store and two adjoining warehouse in 2020.

In 2019, they worked at the huge NewCold facility in Truganina laying a polyurethane cement screed system, roll coats and coving.

"Most of our work is for warehouses, food production facilities and environments that require a high standard of cleanliness and hygiene such as laboratories. We work across the country and have completed a 12 year contract with the Australian Navy applying protective coatings to the decks of frigates and support vessels. Our overseas projects include a number of restaurants in Fiji and frigates in New Zealand," said Andrew.

Able provides painted coatings, spray or trowel applications as well as concrete repairs, curing and sealing. They use Green Star compliant materials and low VOC (Volatile Organic Compound) products.

"Able is especially well equipped with state-of-the-art machinery and an exceedingly reliable full time workforce of 17," added Andrew.

For more information contact Able Industrial Floors Pty Ltd, 2/417 Dorset Road, Bayswater 3153, 03 9738 0742, email ablefloors@ablefloors.com.au, website www.ablefloors.com.au

ShapeShift Design Technologies design, engineer and manufacture complex architectural structures. Starting in May 2019, ShapeShift worked on the engineering, design and manufacture of arched roof vaults for Levels 2 and 5 and the stunning 'egg' shaped feature installed in the central lobby.

ShapeShell-RC (Reinforced Concrete), an advanced GRC product was used for the exterior elements with a finish of off-form grey to suit surrounding precast and in situ elements. The 'egg' was made of ShapeShell-RT (Reinforced Thermoset), an advanced fibre-reinforced thermoset material ShapeShift has developed specifically for the construction industry.

"ShapeShift were engaged early in the project to assist in concept design and ensure the final shapes could indeed be manufactured," said Commercial Manager, Frank Rosselli. "The base design of the sculpture remained largely unchanged, however ShapeShift provided a lot of input to help understand how the items would be constructed and installed."

"We performed finishing and jointing works onsite prior to painting and ensured the final product met the architectural intent of a seamless

look. ShapeShift helped the builder maximise panel sizes that could be transported and lifted into place. This minimised risk of misalignment and also the amount of work required on site to complete the install. We finished up in June 2020, our first project with Hansen Yuncken. They were great to work with on this complex building."

ShapeShift specialises in geometries not possible with traditional building methods and materials. It works with architects and Tier 1 builders to supply the most challenging structures dreamed up by architects, as its tagline states, ShapeShift are Bridging Creativity and Buildability.

For over 20 years, ShapeShift has provided solutions on a variety of landmark projects including 4,800m² of large span ShapeShell-RT elements sweeping across the façade and colonnade of the Victorian Comprehensive Cancer Care Hospital and the Renzo Piano designed 72-storey tower, One Sydney Harbour in ShapeShell-RC. Live projects include works in the United States of America and Singapore.

For more information contact ShapeShift Design Technologies, Suite 107, 33 Longland Street, Newstead QLD 4006, phone 07 3666 0007, email frankr@shapeshift.tech, website www.shapeshift.tech



Keralton Plumbing and Drainage provides hydraulic design and installation services for medium to large scale commercial and industrial projects in Melbourne and surrounding suburbs. With almost 60 employees, the team is able to manage a number of projects at once.

Starting in August 2019, Keralton assisted in the design, and supply and installation of the plumbing, drainage, and hydraulics services to the Victorian Pride Centre. The job included connecting water and gas supplies, the installation of pumps and hot water plant, a water treatment plant, as well as sewerage and stormwater works.

“The challenge involved designing a hydraulic system that complemented the intricate design and aesthetic of the complex,” said Project Manager, Danial McFarlane. “We also had to take care of ground water seepage and controlled it with a sub slab collection system which then treats the groundwater for re-use. Working with a number of valued suppliers, we were able to meet the design requirements for the centre, including the visually appealing installation of the bathroom fitout.”

Keralton Plumbing is a family owned business established over 30 years ago with Tony McFarlane as Director, alongside his sons,

daughter, son in law and daughter in law all working in the business. Keralton works across a variety of sectors including hospitals, schools, aged care and institutional facilities.

Keralton are currently working on the hydraulic design and plumbing installation on a number of large scale apartment buildings including Liberty One, The Marker, Baptcare Aged Care redevelopment and at a Caritas Christi Hospice. In April 2020, Keralton began work on the hydraulic and plumbing package for St Moritz, a development of three luxury apartment buildings on the St Kilda esplanade.

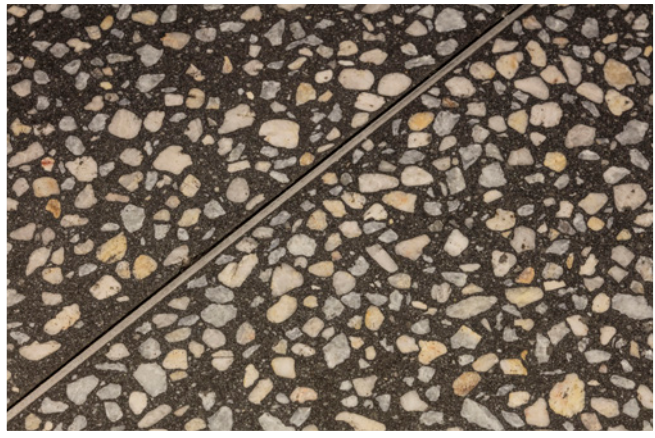
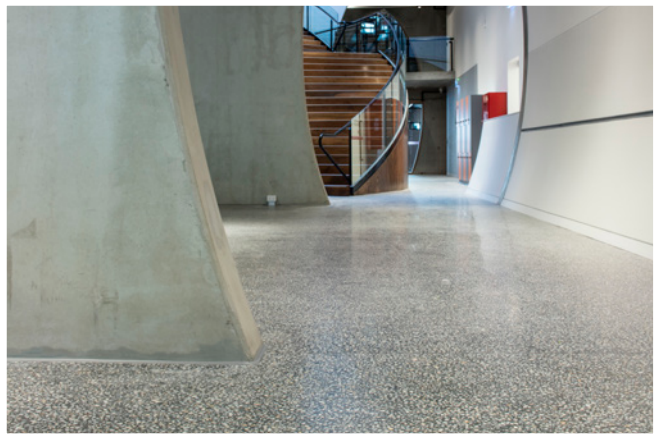
Previous projects completed by the team for Hansen Yuncken include the complete hydraulics installation for the Casey Specialist Medical Centre in Berwick, in 2015 and the Glen Eira Sports and Aquatic Centre in 2012.

For more information contact Keralton Plumbing and Drainage, Factory 1, 27 Bate Close, Pakenham VIC 3810, phone 03 5940 3379, email admin@keraltonplumbing.com.au, website www.keraltonplumbing.com.au

Below Complete Shotcrete completed the application of shotcrete to the basement concrete piles and lift shaft.



Below Policrete worked to the architects specifications and polished 800m² of ground floor in four weeks.



At the Victorian Pride Centre, Complete Shotcrete applied shotcrete to the concrete pile walls of the basement as well as spraying shotcrete to the preformed lift shaft.

“As the shotcrete component of the basement was completed after the main structure, the access to the site was made difficult,” said Owner, Director, Damian Spokes. “It was a challenging, enclosed space which needed the addition of task lighting as well as extraction fans to ventilate the area and remove silica dust.”

In business for 10 years, Complete Shotcrete employ 25 and had the whole team at work on the Pride Centre. They service Melbourne and regional Victoria applying shotcrete for commercial and residential projects specialising in finishes for concrete walls including retaining walls and panels as well as steel trowel finished walls, curves, colours, custom jobs and water features. Civil works include basement construction, steel fixing, bridgeworks and capping beams, underpinning and swimming pools.

Complete Shotcrete have years of experience with infrastructure contracts and have been at work on the Melbourne Metro Tunnel since 2018 applying shotcrete to tunnels and shafts throughout the

network including at Franklin East, St Kilda and La Trobe Street. They have also been working at a number of the Level Crossing Removal Projects (LXRP) including Buckley Street and extensive works at Cheltenham, completed in July 2020. Currently they are at work on the large scale LXRP at Glen Roy, due to be finished by late 2021.

Complete Shotcrete is an established family company and to offer a comprehensive service, Damian often works with brother Gavin whose company, Subterranean Solutions, supplies and fixes steel reinforcing prior to shotcreting.

“We are the first in Australia to import spray equipment that can reach up to 6m, we can complete jobs without the need for scaffold or EWPs,” said Damian.

For more information contact Complete Shotcrete, 187 Station Street, Corio VIC 3214, phone 03 5275 8235, email estimating@completeshotcrete.com.au, website www.completeshotcrete.com.au

Policrete are Melbourne and Geelong’s experts at pouring and polishing concrete to create beautiful concrete floors. Shiny and hard wearing, Policrete’s polished concrete floors add highlights to vast lobbies and cool, light reflective surfaces to small spaces.

In late 2020, Policrete started the polish on the ground floor of the Victorian Pride Centre working to architects specifications to make a decorative and polished floor with coloured aggregate.

“With six of us on the job we worked quickly, we polished the 800m² of ground floor within four weeks,” said CEO, Marcos Shaw. “It was our first job with Hansen Yuncken and they gave us a good run with lots of assistance. Policrete have been contracted for another job with Hansen Yuncken at a warehouse in Dandenong, putting a burnished finish on a 300m² structural slab.”

Policrete can apply any decorative finish to concrete surfaces including a mechanical polish, grind and seal as well as epoxy resin. They have a showroom in Footscray, open seven days a week that displays the wide variety of finishes available. However, Policrete do more than polishing alone and offer a comprehensive service of preparation, including formwork and steel fixing, pouring, placing and polishing

concrete elements. They also provide engineered infill slabs, hydronic heating slabs, concrete benchtops and landscape elements.

Established in 2009, Policrete has a team of 18 to serve domestic and commercial builders and architects, home and business owners.

“Most of our work has been for high rise residential developments, polishing floors in the lobbies and within the separate apartments,” said Marcos. “More recently we are having success with warehouses and factories, Woolworths supermarkets and luxury homes.”

Successful projects for Policrete include the grinding and polishing on 500m² of floors and connecting spiral staircase at the Geelong Performing Arts Centre, completed in late 2019; two large 1,200m² grinding and polishing jobs at RSCV Cape Shank; and the University of Melbourne WEBs building.

For more information contact Policrete, 11 Geelong Street, West Footscray VIC 3012, phone 1300 565 017, email marcos@policrete.com.au, website www.policrete.com.au