



UNVEILING THE POTENTIAL OF MEDICAL RESEARCH

Hansen Yuncken is spearheading groundbreaking advancements in healthcare with the Flinders University Health and Medical Research Building (HMRB) in Adelaide. This architectural marvel, designed by Architectus, will be the focal point of Flinders Village, adjacent to the university's medical facilities. Boasting cutting-edge amenities, the HMRB aims to revolutionise collaborative health research, exemplifying Hansen Yuncken's dedication to excellence and sustainability.

Drawing from over 50 years of exemplary health and medical teaching, the HMRB offers a creative space for collaboration to enable researchers, practitioners and industry partners to work together more closely than ever before.

The HMRB will house over 600 researchers, clinicians and support staff. The 10-storey building will provide state-of-the-art facilities for collaborative research, aiming to make a significant impact on the health and wellbeing of people worldwide.

"Innovation has always been at the core of Hansen Yuncken's projects," said Senior Project Manager, Luke Crouch. "We are constantly seeking better, more efficient ways to deliver our projects, using tools like our award-winning management system HYway."

Health and wellbeing are central to the new Health and Medical Research Building's mission, reflected in its design and location. Its proximity to Flinders railway station is an incentive to use public transport and provides easy access to the Tonsley and CBD campuses. For those who prefer to travel under their own steam, dedicated end-of-trip facilities and a bike store make commuting or a lunchtime walk a breeze.

The HMRB has achieved a Platinum rating under WiredScore certification, making it the

first medical research institute in the world to receive this rating.

The building is also on schedule to achieve Gold WELL and LEED certification for sustainability and wellbeing. Achieving these three certifications together will make the HMRB unique in Australia, and the world.

One of the major challenges of the Flinders University project was integrating the new building with the surrounding landscape and existing facilities.

The design, informed by a cultural narrative and guided by the Indigenous Art and Design Advisory Panel, features colours and elements that reference Rainbow Sands, the natural pigments of the Kaurna Yarta coastline, as well as significant Indigenous landmarks.

The landscaping will connect the University and Flinders Station to the HMRB, creating a new gateway entrance to Flinders and a walking environment that is streamlined, safe and engaging. Lifts at both ends of the building will allow people to move easily from the Village to University Drive, and green spaces will encourage time outside the building.

"The Flinders University Health and Medical Research Building is a testament to our commitment to innovation and excellence in construction," said Luke. "We are proud to be part of a project that will have such a positive impact on healthcare and research in South Australia."

For more information contact Hansen Yuncken, Level 1, 191 Fullarton Road, Dulwich SA 5065, phone 08 8229 7300, email adelaide@hansenyuncken.com.au, website www.hansenyuncken.com.au

CLIENT : Flinders University
BUILDER : Hansen Yuncken
ARCHITECT : Architectus
CONSTRUCTION VALUE : \$280 million

FEATURE IMAGE : Mark Zed Photography (supplied by Hansen Yuncken)
PROJECT IMAGES : Cameron Longshaw (ANCR photographer)





Below JFloors completed floor prep, grinding, moisture barrier, screeding, and installing coved floor and wall vinyl, on the HMRB project.



JFloors, a dynamic and rapidly growing business, is making waves in the commercial flooring industry with its commitment to excellence and customer satisfaction.

Specialising in a wide range of flooring options, including carpet, vinyl, timber, laminate, and more, JFloors has established a reputation for delivering high-quality, innovative solutions for commercial spaces of all sizes.

Their work on the Flinders University Health and Medical Research Building highlights the company's expertise and dedication to superior craftsmanship. The scope of work for this project included floor preparation, grinding, moisture barrier and screeding, as well as the supply and installation of coved floor vinyl and wall vinyl.

Thanks to the efficient collaboration between JFloors' team and the builder's team, the job ran extremely smoothly, showcasing JFloors' ability to deliver exceptional results through effective teamwork.

"We are a relatively young business experiencing consistent growth. We value our reputation for on-time delivery and our 'above and beyond' approach," said Jesse Roberts, General Manager of JFloors.

In addition to Flinders University, JFloors is also working on several other projects, including Resthaven Aged Care, NCIS Sub-Corp, Harpers Field Community Sports Club, and Deloitte Festival One Tower.

These projects showcase the diversity of JFloors' capabilities and their ability to handle a wide range of commercial flooring needs.

"Our flooring options cater for all types of commercial buildings from small retail through to large office spaces, high rise projects, and everything in between," said Jesse.

At JFloors, customer satisfaction is paramount. The team is dedicated to working closely with clients to achieve the right flooring for their needs, ensuring that every project is completed to the highest standards.

"Attention to every detail is what sets us apart – from the subfloor to the finished product," said Jesse. "Our highly skilled team of managers, project co-ordinators and installers ensure you will receive an exceptional job. We are proud of our reputation and go above and beyond to maintain it."

The team at JFloors are invested in your project from start to finish. They have a vast selection of flooring available for all applications.

"With decades of experience in every imaginable commercial project and delivering within deadlines, our team can handle anything you throw at them. We've become the go-to place for people who want everything done in one place, from start to finish," said Jesse.

With a rich history and a passion for flooring, JFloors is setting the standard for commercial flooring solutions. With many years of combined experience in the industry, the team at JFloors has the knowledge and expertise to handle projects of any size and complexity.

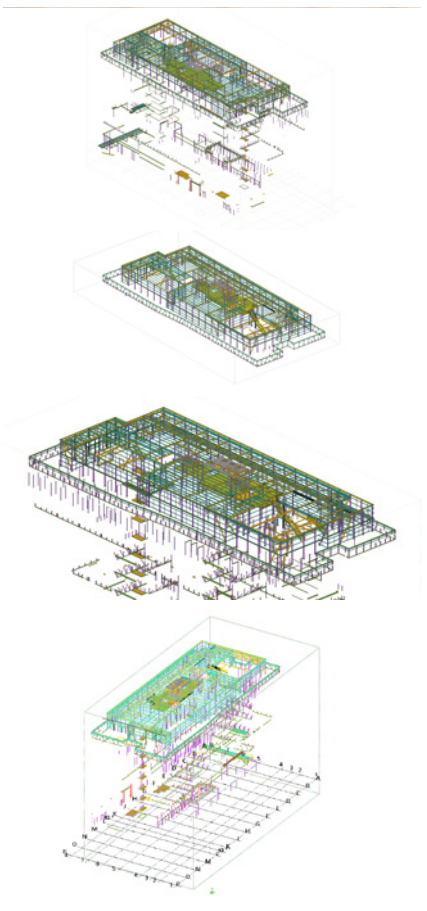
"Our team of industry-leading trade professionals work tirelessly to stay at the forefront of the commercial flooring industry. There is no job too big, and no solution we can't provide," said Jesse.

For more information contact JFloors, Unit 1, 20 Adam Street, Hindmarsh SA 5007, phone 0492 972 228, email projects@jfloors.com.au, website www.jfloors.com.au



Below JP Drafting Services created Structural Steel Shop Fabrication Drawings for Gant and Sons Engineering, for the in Flinders University's Health and Medical Research Building.

Below Dorma Hüppe's movable walls provided flexibility needed for HRMB's needed adaptable room setups for conferences, offices, and exhibitions.



JP Drafting Services provided Structural Steel Shop Fabrication Drawings for Gant and Sons Engineering, the contractor responsible for supplying and installing structural steel for the Flinders University Health and Medical Research Building.

The scope of work for this project was extensive, requiring JP Drafting to deliver accurate steel models and coordinate with various services such as mechanical, fire, and plumbing to avoid clashes with the structural steel. Utilising Tekla Structure, they created a Structural Steel 3D Model and shop fabrication drawings, employing BIM modelling to aid in coordination efforts.

“The Flinders University Health and Medical Research Building stands as an iconic project for South Australia, featuring architectural features supported by approximately 250 tonnes of structural steel,” said Managing Director, Jigar Patel.

Despite short lead times and the complex design requirements, JP Drafting worked meticulous coordination with architects, engineers, and builders to create high quality models. “It was a great experience to work on this project and we are proud to be part of it. It was great to work with the Hansen Yuncken team, and their support and extensive

knowledge on the project always always provided a collaborative platform for problem-solving,” said Jigar.

JP Drafting Services specialise in architectural, electrical, structural, mechanical, and electronics drafting, utilising cutting-edge technological expertise to meet client requirements. With a commitment to understanding clients’ precise needs and delivering sound and affordable solutions, JP Drafting Services ensures projects are completed within proposed budgets and timelines without compromising quality.

By partnering with JP Drafting Services, clients can focus on their core business activities while receiving CAD services that meet international standards. With a dedication to excellence and efficiency, JP Drafting Services is ready to provide solutions for design, drafting, and imaging projects of any scale.

For more information contact JP Drafting Services, 191 Philip Highway, Elizabeth South, SA-5112, phone 0433 366 435, email jpatel@jpdrafting.com.au, website www.jpdrafting.com.au

Dorma Hüppe, a global provider of high-quality operable partition systems, played a crucial role in the Flinders University Health and Medical Research Building Project.

With a legacy of 130 years in the industry, Dorma Hüppe is renowned for its innovative solutions that maximise space and functionality with movable walls.

The Flinders University Health and Medical Research Building Project required versatile room configurations to accommodate various functions such as conference facilities, conventions, offices, and exhibitions. Dorma Hüppe’s movable wall systems offered the perfect solution, allowing the university to efficiently manage its rooms and spaces.

One of the major challenges faced during the project was the installation of a 4m high Glass Operable Wall. Dorma Hüppe worked closely with the architect to design and install the specified operable walls on-site, ensuring seamless integration with the building’s layout and design.

The MOVEO Glass Operable Wall provided both flexibility and transparency, creating a modern and open environment.

The successful supply and installation of operable walls, contributing to the multifunctional room configuration of the building, is a highlight of the project. The VARIFLEX Solid and MOVEO Glass systems offered a harmonious blend of daylight-flooded and sound-insulated room concepts, meeting the university's requirements for versatility and openness.

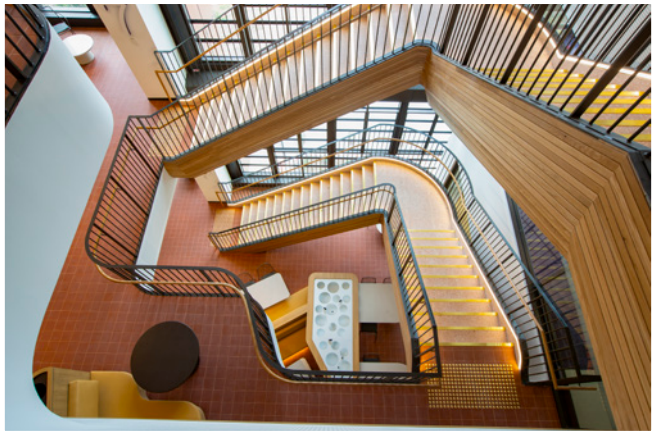
Dorma Hüppe’s commitment to delivering the highest quality custom wall solutions was evident throughout the project. The company’s operable partitions and glass wall systems not only met but exceeded the expectations of the university, providing endless possibilities for the building’s environment.

With a focus on trust, reliability, and customer satisfaction, Dorma Hüppe continues to be a leader in the global movable walls market, offering smart and easy space solutions for various industries worldwide.

For more information contact Dorma Hüppe, Unit 10, Block R, 391 Park Road, Regents Park NSW 2143, phone 0455 321 035, email salesmovablewalls.au@dormakaba.com, website www.dorma-hueppe.com.au

Below PGS undertook a comprehensive role, supplying and installing vital power infrastructure, including standby generators, fuel systems, and a tailored control system.

Below JRCM Commercial Joinery created and installed proportional workstations, panelling, and seating solutions for the project.



Power Generator Systems (PGS) ensured the Flinders University Health and Medical Research Building’s power infrastructure met the demanding requirements of the facility.

PGS’s scope of work for the project was extensive and intricate, encompassing the supply and installation of essential power infrastructure. This included the installation of two 2400kVA standby rated generators, equipped with remote radiators and super low-noise stainless-steel exhaust systems, as well as fuel systems with approximately 50,000L of on-site fuel capacity, along with a unique tailored control system designed to prioritize power to critical areas.

One of the primary challenges faced by PGS was meeting the client’s critical requirement for robust and reliable power to support extensive research and facilities. This necessitated advanced design solutions and close collaboration with stakeholders to ensure seamless integration of power systems.

Additionally, the installation of super low-noise exhaust systems posed unique constraints, which PGS addressed through in-house fabrication capabilities, ensuring compliance with noise regulations while maintaining optimal performance.

A standout feature of PGS’s work on this project was the custom-designed fully integrated control systems. These systems constantly monitor and control building loads, ensuring critical site operations are supported at all times.

“The final commissioning with all stakeholders was a project highlight,” said Managing Director, Andrew Frost. “It was great to see so many integrated components and aspects of this project assembled by numerous trades, and co-ordinated and supported by Hansen Yuncken – coming together to provide a valuable asset for the future of medical research and training.”

PGS specialises in diesel and gas generator systems for critical infrastructure, offering a range of commercial and industrial generators for standby, prime, or base load applications. With access to leading generator brands and a highly experienced team, PGS delivers adaptive design solutions, compliance maintenance, and responsive 24/7 emergency services.

For more information contact Power Generator Systems, 3 O’Connor Court, Gepps Cross SA 5094, phone 08 8349 7854, webstie www.pgsys.com.au

JRCM Commercial Joinery played a crucial role in the construction of the Flinders University Health and Medical Research Building, focusing on the installation of joinery items including wall paneling, booth seating, and workstations.

“This project was particularly challenging due to the unique requirements of the staircase areas, as well as the need to achieve a woodgrain finish and scale the joinery items to fit the space,” said Project Manager, Leigh Pedrick.

Equipped with modern machinery and a team of skilled craftsmen, JRCM Commercial Joinery has established a reputation for delivering high-quality joinery solutions for a diverse range of clients. Their ability to work with various materials, including timber, veneers, laminates, concrete, stainless steel, upholstery, stone, and glass, allows them to meet the unique needs of each project.

With a team of 35 staff dedicated to the project, JRCM Commercial Joinery worked diligently to ensure the joinery elements were completed to the highest standards. Despite the challenges faced, the team’s expertise and commitment to excellence allowed them to overcome obstacles and deliver exceptional results.

Founded in 1993 by John Reuther, JRCM Commercial Joinery has grown significantly over the past 30 years. Starting from a small workshop in Edwardstown, the company has expanded its operations and relocated to a larger facility in Thebarton, and later to an even larger workshop in Dudley Park, boasting 4,000m² of floor space.

With a focus on quality, integrity, and customer satisfaction, JRCM Commercial Joinery continues to be a trusted partner for joinery solutions in South Australia.

Some of the notable projects completed by JRCM Commercial Joinery include Her Majesty’s Theatre, Adelaide Oval & Oval Hotel, Skycity, Calvary Adelaide Hospital, 60 King William Street, Adelaide Botanic School, Walker Tower and many more.

For more information contact JRCM Commercial Joinery, 88 Exeter Terrace, Dudley Park SA 5008, phone 08 8234 9600, email admin@jrcm.com.au, website www.jrcm.com.au



Below PLG Painting efficiently finished interior surfaces at the HRMB including painting walls, ceilings, doors, frames, and steel stair balustrades.

Below Capella Science installed advanced STATEBOURNE Cryogenics systems at Flinders University Health and Medical Building.



Since 1985, PLG Painting Services has been a trusted name in the painting industry, offering superior workmanship and expertise in large-scale projects throughout South Australia. As a family-owned and operated business, PLG has built a reputation for excellence, specialising in high-end residential homes to multi-storey commercial and industrial buildings.

At the Flinders University Health and Medical Research Building, PLG Painting effectively completed interior surface finishes, encompassing painting walls, ceilings, doors, frames, and steel stair balustrades, tailored for their intended purposes and to the highest possible standard.

“We used Dulux Professional® SteriGuard® inside all the laboratories,” said PLG’s Lisa Giamarelos. “Dulux Professional® SteriGuard® is a range of premium specialty paint products designed to support internal environments in clinical settings, ensuring a healthy and sterile state.”

Led by founder and Director, Peter Giamarelos, along with his sons Sotiri Giamarelos and Apostoli Giamarelos, PLG Painting Services has the experience and skills to handle a wide range of projects,

working closely with South Australia’s largest building companies to ensure projects are completed on time and to the highest standards.

One of PLG’s key strengths is its specialisation in commercial and industrial painting. With a focus on projects in Adelaide, PLG has successfully completed painting projects for schools, shopping centers, office fit-outs, new multi-storey apartment blocks, retail fit-outs, government defense projects, and more.

PLG Painting Services stands out as a leading painting contractor in South Australia. With a focus on quality, expertise, and customer service, PLG remains a trusted choice for painting projects of all sizes and complexities.

For more information contact PLG Painting Services, 26 Lysle Street, Brooklyn Park SA 5032, phone 08 8352 8180, email info@plgpainting.com.au, website www.plgpainting.com.au

The STATEBOURNE Cryogenics solutions implemented at Flinders University represents cutting-edge advancements in cryogenic storage, with enhanced efficiency, safety, and reliability. Supplied and installed by Capella Science, the project is a testament to the company’s ability to deliver high-quality scientific solutions, for a variety of purposes.

Capella Science commenced on-site work in February 2024, and drew on the collective experience of their team, which included a STATEBOURNE Cryogenics UK engineer, local service technician and Director, Paul Doyle.

The Flinders University project is unique, reflecting Capella Science’s adaptability to complex requirements. “We’ve installed an entire system including external supply tanks, super-insulated pipelines, and automatic refrigerators with integrated temperature logging and alarm systems,” Doyle said. “Our solutions are designed to be economical on LN2 and avoid triggering oxygen alarms unnecessarily.”

In total, Capella science installed four STATEBOURNE Cryogenics Biosystem Access 24 Automatic LN2 storage tanks, three STATEBOURNE Cryogenics Biosystem 24 Vapour Phase racking with

Daisy Chain Connections, 1.5m insulated hoses, 2m insulated Hot-Gas Bypass Hoses, and Biosystem Access 24 Liquid Phase Racking.

The STATEBOURNE Cryogenics Biosystem Series is capable of handling up to 98,000 vials. “These units offer automatic liquid nitrogen top-up, dual fill solenoids for extra security, and a self-diagnostic data logging processor,” Director, Paul Doyle said. “They are compliant with MDD93/42/EEC standards and can be integrated into a pipeline system or operate as standalone units.”

What sets these products apart is their versatility and robust features. The Biosystem Access units, available in models 12, 24, and 50, provide rapid specimen storage and retrieval, crucial for frequent-access users.

“Each unit can be configured for liquid or vapour phase storage, featuring full-width openings for easy access, quick chill functions, and a vapour guard option,” Paul said. “They also come with enhanced control via PC connections, and robust construction, ensuring durability and security.”

For more information contact Capella Science, phone 02 9575 7512, email enquiries@capellascience.com.au, website capellascience.com.au

Below Ecept managed detailed design, engineering, production, installation, and project management for internal and external branding, wayfinding, and Sky signage



Below SA Commercial Blinds enhanced the functionality and aesthetics of rooms with the installation of motorised and manual roller blinds, and curtains.



Ecept, a South Australian owned and operated Design and Construct Signage Company, is making waves in the signage industry with its innovative approach and commitment to excellence.

Ecept provided detailed design, engineering, production, installation, and project management for all internal and external branding, statutory, wayfinding and Sky signage for the Flinders University Health and Medical Research Building project.

“This project was the largest to date for Ecept,” said Director, Ian Widdop. “We produced over 2,000 signs over a 10-month program.”

Ecept embraced new technologies and utilised non-specific signage materials to help create a unique look and feel for the building. The team also employed problem-solving and prototyping techniques to create bespoke signage solutions that met the project's requirements.

One of the highlights of this project was Ecept's recent acquisition of a tactile/braille printer from the US, the only one of its kind in South Australia. This investment in new technology enabled Ecept to expand

its capabilities and deliver high-quality tactile and braille signage for the project.

“Our personal goal as a company is to constantly challenge our abilities by developing and implementing new ideas that stand out from the crowd and provide recognition for our clients,” said Ian.

This commitment to innovation and excellence has earned Ecept multiple national awards and recognition as a leader in the signage industry.

As a proud partner for Hansen Yuncken, Ecept continues to provide outstanding services in graphic design, industrial design, interpretive and corporate signage, wayfinding, exhibitions, and creative fitouts. With a broad base of skills and experience, Ecept is well-equipped to handle projects of any size and complexity, delivering exceptional results for clients across South Australia and beyond.

For more information contact Ecept, 236 Richmond Road, Marleston SA 5039, phone 0435 844 779, email ian@ecept.com.au, website www.ecept.com.au

SA Commercial Blinds demonstrated their expertise in providing quality window furnishings for commercial spaces at the Flinders University Health and Medical Research Building.

The project involved installing motorised and manual roller blinds, as well as curtains, to enhance the functionality and aesthetics of the building. The scope of work for this project was extensive, including the installation of motorised and manual roller blinds to most perimeter windows, as well as curtains to wet areas and the prayer room.

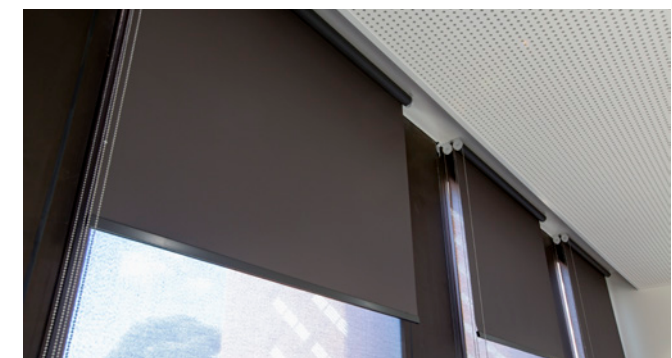
One of the major challenges faced during the project was the installation of high-level 5.5m blinds on Level 2. To overcome this challenge, the team installed wire guides to ensure the blinds were securely in place.

Despite facing challenges on site at times, SA Commercial Blinds successfully completed the project to the highest standard. Their expertise in the industry, coupled with their commitment to delivering quality products and services, ensured the project was a success.

SA Commercial Blinds is a South Australian owned business. They specialise in providing innovative window covering solutions for

commercial projects, no matter the size. Their partnership with leading brands in the industry allows them to offer a wide range of products to suit any project requirements.

Current projects include SAAB at Mawson Lakes, CMI at Criesies beach, and SASI at Mile End.



For more information contact SA Commercial Blinds, phone 08 8347 8700, email sales@sacommercialblinds.com.au, website www.sacommercialblinds.com.au



Below GMR Interiors installed Siniat Createx Perforated Plasterboard and Soundshield for partitions and ceilings.



GMR Interiors completed all of the internal ceilings and partitions as well as aluminium and glazing work for the Flinders University Health and Medical Research Building.

GMR Interiors specialise in commercial ceilings, partitions, aluminium and glazing. All the aluminium is manufactured in their workshop. The scope of work for this project was extensive, with GMR Interiors tasked with installing Siniat 13mm Createx Perforated Plasterboard in the stair voids, as well as 13mm Soundshield and Siniat framing for partitions and ceilings.

A notable accomplishment was the full framing, sheeting, and flushing of the Level 3 Stairwell utilising Siniat products, underscoring the expertise of the GMR team. Moreover, GMR Interiors demonstrated their dedication to quality and precision by installing Alspec's Aluminium Suites in both the wet and dry labs.

“Despite facing challenges related to the complicated build and specifications outlined for the project, in collaboration with the Hansen Yuncken team, we successfully overcame them by coming up with innovative solutions on a day-to-day basis,” said Project Managers, Seth Powell and Alby Kenney. “The close relationship

formed between GMR Interiors and Hansen Yuncken was a key factor in navigating these challenges and ensuring the project’s success.”

One of the major highlights for GMR was seeing the finished product come together, with the contributions from the GMR team highlighted within the design. Their dedication to delivering high-quality workmanship and their ability to overcome challenges are a testament to their professionalism and expertise in the field.

GMR Interiors’ contribution to the Flinders University Health and Medical Research Building project was instrumental in achieving the high standards of construction and finishing expected for such a prestigious project. Their commitment to excellence and collaborative approach ensured the successful completion of this iconic building.

For more information contact GMR Interiors Pty Ltd, 18-20 Richard Street, Hindmarsh SA 5007, phone 08 8363 3636, email gmr@gmrinteriors.com.au