



A PERSONAL BEST

DEVELOPER : Barker College
MAIN CONSTRUCTION COMPANY : Prime Constructions
ARCHITECT : Neeson Murcutt + Neille
STRUCTURAL ENGINEER : SDA Structures
CONSTRUCTION VALUE : \$40 million

The \$40M Barker College Rosewood Centre is a state-of-the-art 3-storey indoor sports complex. The project includes the demolition of existing structures and the construction of a sports and learning precinct including five multi-purpose sports courts, 12 classrooms, two gyms, viewing platform, café, and car parking for 150 cars, allowing the college to showcase sporting events, hold full assemblies, as well as providing a space for the wider community to access.

With many awards to their credit, Prime Constructions has established a proud record of achievement in the building industry. Since their formation in 1983, Prime Constructions has completed many significant projects focussing on new construction, refurbishments and fitouts in the industrial, commercial, institutional, educational and automotive sectors.

In May 2020, Prime Constructions completed a construct only commission for Barker College, a prominent private school in Hornsby on Sydney's North Shore. The company was contracted to build the Rosewood Centre, a state-of-the-art, purpose designed facility providing five court spaces, gym and exercise spaces, rooms for dance, general purpose teaching areas, a café, viewing platform across the college sporting fields and parking for over 150 cars.

The Barker College Rosewood Centre showcases sporting events, holds full school assemblies and gatherings as well as provides a space for the wider community to access. Designed by Neeson Murcutt + Neille, emphasis was placed on blending the building into the existing landscape and maximising the panoramic views across the sporting fields.

Prime Constructions had the task of translating the design into an aesthetically striking yet practical and robust building that would fulfill a variety of needs for the college and the community. Featuring the use of steel and glass, with areas of exposed concrete and cladding, Prime Constructions began building in December 2018.

Prime Constructions was very proud of the finished building which will enhance the college's academic and sporting life for decades to come. "Throughout the construction process we had to give high priority to careful coordination and planning, as the school was continuing to operate and we had multiple subcontractors needing to access the grounds with manpower and materials on a daily basis," said Project Manager, David Mollerstrom. "Safety for all stakeholders was also obviously a key priority."

The importance of the planning process was heightened by the requirement for a staged hand over as various sections of the new building were required for use by the college, particularly the sports hall and classrooms. Each section had to be totally finished to specification and handed to the college for use while other sections of the building remained under construction.

At various stages of construction, new challenges arose. The exposed concrete sections, for example, had to have surfaces protected while other building activity was proceeding.

Prime Constructions is no stranger to the complexities of coordinating projects in the education sector. They have undertaken many similar projects including at The King's School in Parramatta, Loreto Kirribilli, St Aloysius' College Milsons Point, Abbotsleigh School Wahroonga and Monte Sant'Angelo Mercy College North Sydney.

With 37 years experience, Prime Constructions is now regarded as one of the leading building contractors in New South Wales. Prime prides themselves on their safety record, innovative construction solutions, competitive pricing, financial strength and their commitment to integrity in all their dealings with customers, consultants and subcontractors. This approach has secured a sustainable growth trajectory with a high level of repeat business from loyal and satisfied clients.

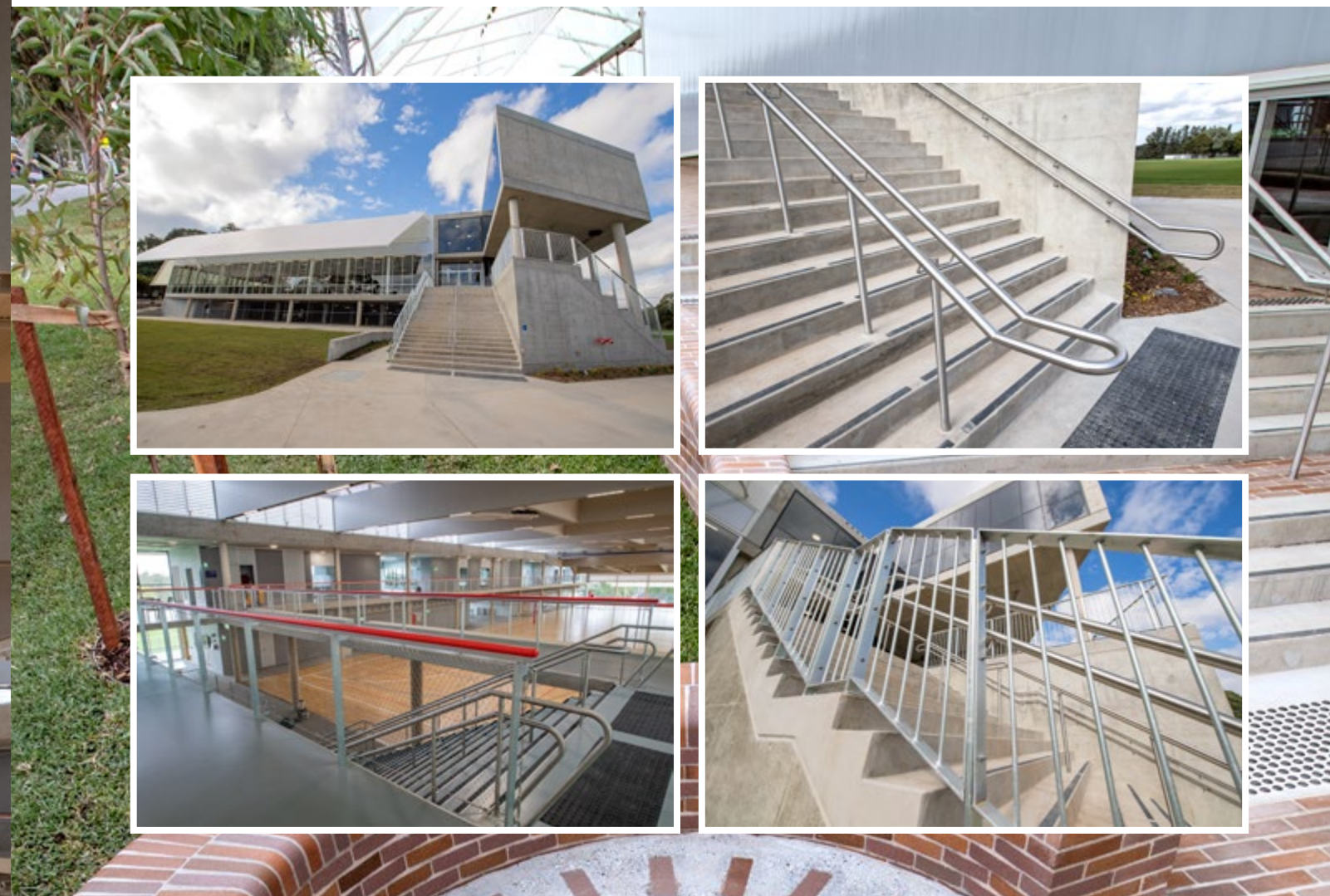
A key to Prime's success has been the quality of their people and the culture that has been developed within the organisation. The company invests in the professional and personal development of all their team. Many team members began their careers as cadets and have grown with the company to now be in senior leadership roles.

As well as their record of success in the education construction sector, Prime Constructions is also renowned for their work in the automotive sector, having completed many showrooms and spare



parts warehouses for customers including the Volkswagen 7,000m² spare parts facility at Chullora, a showroom for Col Crawford Hyundai at Brookvale and the Penrith Mazda centre.

For more information contact Prime Constructions, Level 2, Tower 2, 407 Pacific Highway, Artarmon NSW 2064, phone 02 9418 7707, email info@primeconstruct.com.au, website www.theprimegroup.com.au



Elite Balustrades is a highly successful family owned and operated business established in the 1980s that has grown their operation from small residential projects to now offering a comprehensive product range to the building industry. Elite Balustrades specialises in the design, manufacture and installation of balustrades, handrails and pool fences suitable for domestic and commercial projects of any size.

As a regular partner with Prime Constructions, Elite was engaged to supply all steel and stainless steel handrails to all sections of a new building at Barker College on Sydney's north shore.

One of the interesting features of the specification for the project was for sections of the handrails to be provided in a special red plastic covering. "It has been some years since this type of product has been requested but new styles and designs are now on the market," said Director, Michael Hart. "The coloured handrails provide higher visual guidance and wall protection, as well as providing extra protection against hand-borne infection."

All handrails and balustrades provided by Elite are designed to comply with building code regulations and to exceed Australian Standards.

"We are committed to designing, manufacturing and installing the strongest, safest and most aesthetically pleasing balustrades available in the marketplace," Michael said. "We have a highly experienced team of designers and manufacturing staff, many of whom have been with us for over 20 years and take pride in despatching products to site that perfectly meet specifications. Our installation team is also highly proficient in all aspects of balustrade and rail installation."

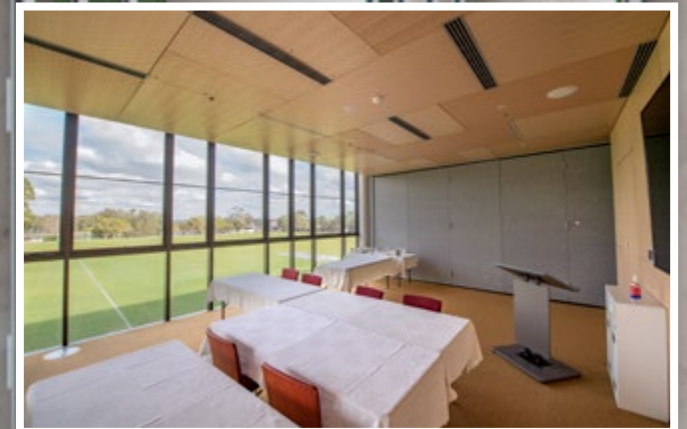
With many commercial and public sector projects to its credit, Elite has built a wide customer base, with many companies bringing regular repeat business. In association with Grindley, Elite recently completed providing handrails and balustrades at Warrigal Aged Care Centre in Queanbeyan and is currently working on a project at Penshurst Primary School.

For more information contact Elite Balustrades, 24 Justin Street, Smithfield NSW 2164, phone 02 9729 0500, email sales@elitebalustrades.com.au, website www.elitebalustrades.com.au

Below Apollo Fabrication Group provided a complete structural steel package, including over 250 tonnes of steel and 47 trusses.



Below Airfast Air Conditioning were responsible for providing the air conditioning services throughout the project.



Apollo Fabrication Group is a specialist in structural and architectural engineering. The company has the capability and experience to undertake large projects, requiring the manufacture and installation of high end structural steel fabrication; with protective coating systems to meet the project requirements.

The Rosewood Centre at Barker College was one of Apollo's recent showcase projects. We partnered with Prime Constructions throughout the tender and construction phase to develop a methodology that overcame budget and design constraints.

"The centre is a state-of-the-art facility for the school, and we feel honored to have been involved in the project," said Director, Nathan Jackson. Apollo's scope consisted of the supply and installation of the structural steel package, including over 250 tonnes, of detailed fabrication and 47 trusses, spanning up to 36m.

Apollo Fabrication commenced work at the Rosewood Centre in July 2019 and completed their assignment in February 2020. The company has a 3,500m² covered factory in Young, New South Wales. With 35 employees, all design, project planning, steel preparation, protective coating and fabrication is undertaken prior to delivery to site for installation.

Apollo is focused on the highest level of quality control for any project. "Total quality control is carried out using two basic principles – quality is built in at every stage and quality is continually improved. To achieve total quality control, Apollo Fabrication involves each and every team member to ensure that only the best work is passed on to the next process."

This focus on quality continues to win large and prestigious projects for Apollo Fabrication, which include hospitals at Dubbo, Wyong, Wagga Wagga and Campbelltown, the Ashfield Aquatic Centre, two major developments in Parramatta including the GPT Tower and Parramatta Innovations. The versatility of Apollo Fabrication is evident from their previous projects which range from the Emanuel Synagogue in Sydney to the large Sikorsky Logistics and Maintenance Facility in Nowra.

For more information contact Apollo Fabrication Group, 10-12 Telegraph Road, Young NSW 2594, phone 1800 007 662, email sales@apollofabrication.com.au, website www.apollofabrication.com.au

The team at Airfast Air Conditioning is highly experienced in providing integrated commercial heating, ventilation and air conditioning (HVAC) solutions across Sydney and greater New South Wales. Airfast has a diverse portfolio of completed projects across the education, retail, hospitality, residential and office sectors.

One of Airfast's recent projects has been the Barker College Rosewood Centre, where they supplied the mechanical services.

The Rosewood Centre involved a substantial installation programme which began in June 2019. "Our brief was to supply air conditioning throughout the development," said Project Manager, Aaron Oldfield. "We achieved this objective by installing Temperzone package units on the roof for the air conditioning in the sports hall. In the 3-levels of learning space, we installed Daikin VRV air conditioning systems."

One of the major challenges for the Airfast team was getting all the ducting in the limited ceiling space. The company also installed one 65m length and one 40m length of exposed oval ductwork which had to be handled carefully as it was unpainted. "The challenge was to complete the installation with the exposed ductwork totally free of

scratches and other marks, which we achieved. The end result is an attractive feature," said Aaron.

To manage all aspects of the buildings mechanical services, Airfast also installed the building management system. They had a total of 15 on the job which included subcontractors for sheet metal fabrication.

Airfast has a unique skill set with a team made up of professional project managers, draughtsmen and other relevant trades. The company is accomplished at design and construct projects and can provide a complete range of integrated HVAC solutions suited to all building sizes and industry sectors.

For more information contact Airfast Air Conditioning, Unit 36, 24 Garling Road, Kings Park NSW 2148, phone 02 9679 9799, email info@airfast.com.au, website www.airfast.com.au