

# PAH EMERGENCY DEPARTMENT



## ABIGROUP EXPAND PA HOSPITAL

Queensland Health has continued the upgrading of Princess Alexandra Hospital in Brisbane with the next stage, the Emergency Department Expansion Project, currently underway.

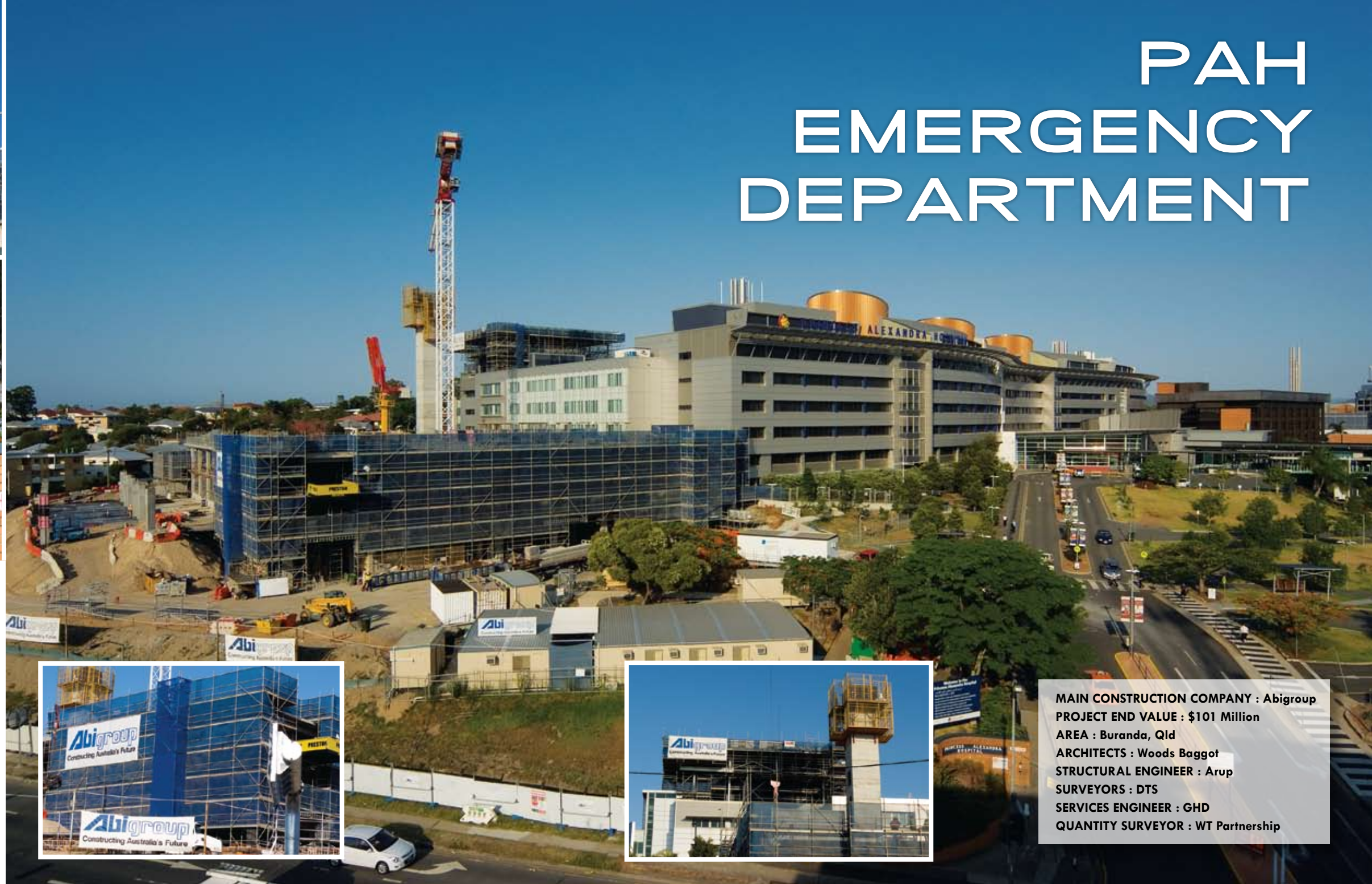
The \$101 million project was awarded to managing contractor, Abigroup and involves three stages: stage 1 was the construction of a new rooftop helipad, stage 2 is the expansion to the Emergency Department and Medical Assessment and Planning Unit and stage 3, new radiation oncology bunkers and PET scanner which is due for completion in January 2011.

The \$101m development on the south-east corner of the hospital, will triple the size of the existing emergency department with 41,000m<sup>2</sup> of new space and 800m<sup>2</sup> of upgraded space.

The new state-of-the-art helipad, located on the south-east corner of the main hospital building, includes an aluminium helideck complete with integrated fire fighting system retrofitted to the existing hospital rooftop area and a “hot lift” from the roof directly to the new Emergency Department’s resuscitation room to allow timely transfers for critically ill patients.

The helipad was built off-site and shipped to Brisbane for assembly and installation on-site. In order to install the hot lift and future lift core footings, demolition of the existing suspended slab was required.

Stage 2 of the project involves construction of a new Emergency Department which will significantly increase the level of services and



facilities. The acute treatment bays increase from 12 to 25, sub acute bays from 4 to 8, resuscitation rooms from 4 to 5 and the observation unit from 6 to 8.

The expansion also has provision for a CT scanner connected to the resuscitation rooms, allied health and fast-track treatment areas, mental health emergency assessment unit and decontamination and disaster response facilities.

This stage of the hospital upgrade also includes a new Medical Assessment and Planning Unit with 30 extra acute inpatient beds including 10 single rooms.

The building structure is concrete columns and suspended slabs on bored pier foundations and the earthworks involved a cut for the building pads and fill for the perimeter access road.

Stage 3 of the project involves the expansion of the existing Oncology Department with the construction of three additional 18MV bunkers and associated patient, staff and service areas. The expansion is in response to a significant growth in demand for radiation oncology treatment.

As Managing Contractor, Abigroup faces the challenge of coordinating works while the main hospital and existing facilities and services remain operational with easy access for patients and staff.

Parts of the design were continually being developed during the works, with Abigroup involving all sub-contractors in extensive ‘on the job’ planning under a strict safety policy.

Abigroup commenced work on the project in 2009 with completion due at various stages throughout 2010.

As a top-tier contractor Abigroup has the proven capability to complete the most demanding of projects and is clearly differentiated by their hands-on approach.

Abigroup employs its own teams and boasts the largest blue collar workforce in the construction industry providing clients with significant benefits in quality, delivery, cost and timing.

**MAIN CONSTRUCTION COMPANY : Abigroup**  
**PROJECT END VALUE : \$101 Million**  
**AREA : Buranda, Qld**  
**ARCHITECTS : Woods Bagot**  
**STRUCTURAL ENGINEER : Arup**  
**SURVEYORS : DTS**  
**SERVICES ENGINEER : GHD**  
**QUANTITY SURVEYOR : WT Partnership**

**ABIGROUP HOUSE**  
Stanley Street Plaza  
South Bank QLD 4101  
t. 07 3020 8200  
[www.abigroup.com.au](http://www.abigroup.com.au)





## LACK GROUP SUPPLIES TRADES & LABOUR FOR PA HOSPITAL

The expert services provided by specialist labour hire company, the Lack Group, have been proven to save developers and builders valuable time and resources in securing the most suitable labour for projects of all sizes.

A family owned company, the Lack Group specialises in labour hire, traffic control management & training services for both the private and public sectors for the building and construction industry.

With 30 years of combined experience and exemplary professionalism, the Lack Group was contracted to supply trades, labour and training to the main contractors on the \$101m Princess Alexandra Hospital Upgrade project in Brisbane.

The Lack Group are also currently contracted to provide services to the Ipswich Law Courts project, the Edge refurbishment and the QPAC refurbishment.

The Lack Group has earned success and industry recognition through the enthusiasm and professionalism of their dedicated management team and employees, achieved through their proven strategy of putting

in place a close-knit team of key personnel to successfully deliver client requirements at competitive rates.

The company's interactive website streamlines the job search process and enables sourcing the best candidates from throughout Australia to suit the project.

To support clients fully, the Lack Group of companies provide 24-hours per day, 7 days a week service and support.

**LACK GROUP**  
PO Box 1713  
Burleigh Heads Qld 4220  
t. 07 5520 1144  
f. 07 5520 1166  
contact: Diane Lack  
e. [diane@lackgroup.com.au](mailto:diane@lackgroup.com.au)  
[www.lackgroup.com.au](http://www.lackgroup.com.au)



## A VERY ACTIVE PARTICIPANT

With Active Steel operational in Queensland for well over a year, they have already completed a range of high quality projects and now add the Princess Alexandra Hospital upgrade to their growing list of credits.

Working closely with main contractor, Abigroup, Active Steel were contracted to supply reinforcing steel to the project and provided scheduling, cutting, bending, tagging and delivery services to the \$101m hospital redevelopment.

To meet the challenges of the short lead times, Active Steel had an experienced scheduler on the project, working on a daily basis with Abigroup to prioritise the work to meet the deadlines.

A privately owned, independent Australian company, Active Steel has been providing quality steel reinforcement products and services to the building and construction industry as well as major infrastructure, industrial and residential projects throughout NSW since 1995 and their recent move north allows them to supply jobs in all parts of Queensland.

To serve the Queensland market, Active Steel has opened a cage fabrication facility in Brisbane to prefabricate all reinforcing cages with an automated pile cage fabricating machine. This further expands the company's modern manufacturing facilities which are equipped with the most up to date machinery from Europe.

Active Steel offer an extensive range of services and products including full reinforcement detailing services; bending, cutting & delivery of reinforcement bar and mesh to site; manufacturing of square & rectangular mesh in standard sheets; manufacturing of engineered mesh; manufacturing of pile cages & off site prefabrication of columns, beams etc; supply of swimming pool steel; transport from utes to semi trailers with hi-ab's as well as a full range of accessories for the tying & placement of reinforcement steel.

The company's portfolio of projects includes Mount Olivet Hospital for Watpac, Wyaralong Dam and GWH upgrade for Fulton Hogan, Blowering Dam for MacMahons, K2RQ rail duplication for Leightons, Sydney Water HQ for Multiplex and The ARK North Sydney for Thiess.

48 Leland Street  
Penrith NSW 2750  
t. 02 4732 3422  
f. 02 4732 3612  
[www.activesteel.com.au](http://www.activesteel.com.au)

44 Magnesium Drive  
Crestmead QLD 4132  
t. 07 3803 7304  
f. 07 3803 7194







## ECB PARTNER UP FOR PAH EMERGENCY

Queensland-based contractor, ECB Scaffolding, partnered with Boral Formwork and Scaffold to successfully supply and erect scaffold for both the emergency department extension and the installation of the helideck on the Princess Alexandra Hospital Redevelopment in Brisbane.

Providing 41,000m<sup>2</sup> of new space and 800m<sup>2</sup> of upgraded space, the \$88m development will triple the size of the existing emergency department at the hospital.

ECB used a combination of cuplok scaffold and layher beams with the helideck the main feature of the company's scope of works on the project.

The major challenge was to develop a successful plan to approach the project. A plan that didn't just suit the scaffolding company's capabilities but actually achieved the client's requirements. Where other scaffolding companies had struggled with this challenge, ECB succeeded.

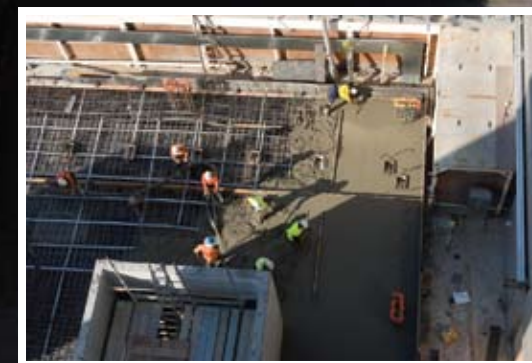
ECB's directors, Campbell Beattie and Scott Wallace had experience on similar projects, having been heavily involved with Abigroup on the construction of the helideck on the Mater Mothers Hospital. They applied this invaluable experience to the Princess Alexandra Hospital and achieved the successful result by using a product called Layher Beams.

ECB prides itself on formulating the safest, least expensive but most effective scaffold package to suit the individual needs of each customer on each project.

They are constantly working with companies such as Abigroup on developing innovative solutions to difficult projects while raising the level of safety awareness and incorporating a 'better safe than sorry' attitude within the industry.

ECB was formed two years ago by Scott Wallace and Campbell Beattie both former site supervisors for Blackadder Scaffolding Qld and currently they employ 30 to 60 scaffolders depending on project requirements.

**ECB SCAFFOLDING PTY LTD**  
Unit 18/28 Burnside Road  
Yatala QLD 4207  
t. 1300 588 504  
f. 1300 507 699  
contact: Scott Wallace  
e. [scott@ecbgroup.com.au](mailto:scott@ecbgroup.com.au)



## PAH EMERGENCY FOR ADMIRAL

An impressive 20 year performance record and the flexibility to adapt to changing project requirements, were critical issues in Brisbane-based Admiral Concreting being awarded the contract for the Princess Alexandra Hospital Emergency Department Upgrade Project.

Contracted by main builder, Abigroup, Admiral increased the scope of their operations from concrete place only to detailed excavation and concrete place on this extremely significant project.

The \$88m development will triple the size of the existing emergency department with 41,000m<sup>2</sup> of new space and 800m<sup>2</sup> of upgraded space.

The building structure is concrete columns and suspended slabs on bored pier foundations with earth works involving a cut for building pads and fill for the perimeter access road. Demolition of the existing suspended slab was required to install a Helideck hot lift, future lift core footings and to complete the level 1 suspended slab.

Admiral Concreting was the contractor for Detail Excavation and Concrete Place and because of the size of the project and type of work involved, they engaged a full time project manager to administer the works under a very high safety standard.

The scope of works included carrying out the set-out, detail excavation and concrete place of the footings as well as concrete placement to all vertical and horizontal elements of the structure.

Due to the design being developed during the works, Admiral worked closely with Abigroup on all issues, especially in overcoming the major challenge of maintaining the programme under a strict safety policy, which required extensive 'on the job' forward planning.

The project further strengthens Admiral's reputation for diversity which has been built on the successful completion of a wide range of projects from housing estates to complex high rise and industrial developments throughout south-east Queensland.

Admiral is renowned for embracing new technologies, maintaining a highly skilled team and fleet of machinery and equipment from their own warehouse complex in Geebung in Brisbane, but most significantly for their ability to develop and implement a clear and concise organisational programme for each project.

**ADMIRAL CONCRETING**  
Unit 34, 388 Newman Road  
Geebung Qld 4034  
t. 07 3265 2466  
f. 07 3216 5288  
contact: Lynette Rose  
e. [lrose@admiral.com.au](mailto:lrose@admiral.com.au)  
[www.admiral.com.au](http://www.admiral.com.au)



# QUANTITY SURVEYORS AND CONSTRUCTION COST CONSULTANTS

WT Partnership is proud to be involved with the Princess Alexandra Hospital redevelopment and expansion, a major and important project for Queensland Health. Our involvement commenced at initial concept followed by budget estimation and cost planning, value management, negotiation and recommendation of guaranteed contract sum, audit on tenders received, assessment and certification of progress claims and variations.

WT Partnership is a long established award winning international practice of property and construction consultants. We commenced business in Australia in Adelaide and Melbourne in 1949. Our Brisbane office was established in 1981 and we opened our Gold Coast office in 1987. We provide consultancy services on a wide range of projects worldwide, drawing on the resources of 1000 staff operating from 47 offices located throughout the United Kingdom, Mainland Europe, South East Asia and Australasia. Last year, we celebrated 60 years in business in Australia.

The WT Partnership experience and excellence in providing project control and cost management services for clients from both the private and public sectors has resulted in, and continues to result in, commissions for some of the largest and highest profile construction projects in Australia and around the world. In addition to the Princess Alexandra Hospital, major hospital projects on which we have provided quantity surveying services include the recently completed Auburn Hospital, the Royal Children's Hospital in Melbourne, the current Fiona Stanley Hospital in Perth, Logan Hospital, Redlands Hospital, Pindara Hospital Extensions, Pacific Private Clinic, Gold Coast Southport Hospital and Ipswich Hospital Stages 1, 2 and 3. We were

also the quantity surveyor for the design, development and delivery of the Comprehensive Cancer Research Institute for the Qld Institute of Medical Research at the Royal Brisbane Hospital complex.

WT Partnership safeguards the financial interests of clients by providing a full range of construction cost management services including estimating and cost planning, cash flow forecasting, contractual and tender procurement advice, tender documentation, contract administration, progress valuations, claims and variation analyses, preparation of financial/final account statements and audits, depreciation schedules, asset registers and facilities management.

It's all about partnerships in action, working through each phase of the development process giving professional, timely and considered advice on all aspects of project cost, value and risk; this is the WT Partnership difference.

**WT PARTNERSHIP**

**WT PARTNERSHIP**  
Level 5, 108 Wickham Street  
Fortitude Valley QLD 4006  
t. 07 3839 8777  
f. 07 3832 4850  
e. [brisbane@wtpartnership.com.au](mailto:brisbane@wtpartnership.com.au)  
[www.wtpartnership.com.au](http://www.wtpartnership.com.au)



## RIGGED FOR SUCCESS

Mulherin Rigging & Cranes (Aust) Pty Ltd (MRCA) is a privately owned company that has been involved in the construction industry for 14 years and has established a reputation for innovative Rigging Solutions. MRCA's motto is "Your Safer Rigging Solutions" and MRCA was awarded the Helideck erection contract with Abigroup in Australia after its successful completion of the helipad at the Mater Hospital Site in 2008. A close working relationship between MRCA and Abigroup and the Helideck supplier (Aluminium Offshore Pte Ltd) ensured that the project was completed on time and on budget. Aluminium Offshore's General Manager, Dr Wu Yunling says, "MRCA is our preferred Helideck erector in Australia."

MRCA management undertook a trip to China to QA measure and inspect tolerances and develop a marking system for the items. Site Supervisor Tim Munster says, "We were involved in the delivery and storage of the items in our yard. The pieces were sorted into the pre-marked bundles before being taken to site for building into modules. The modules were carefully built to a tight tolerance so that the Tower crane capacity would not be compromised and the installation time minimised." Project Supervisor Chris Vanderlaan says, "A challenging aspect of the project was the decking. We had to design and have fabricated specialised Aluminium brackets to install the decking planks. We also designed a handrail on wheels to eliminate exposure to live edges. Price does play a part on projects such as these but safety, reliability, professionalism, quality along with the ability to co-operate effectively with other contractors are all vital too."

MRCA is currently working on some of the large Queensland Government infrastructure projects such as the Hinze Dam bridge lift, the Clem7 NSBT tunnel canopies, the Gateway Bridge Upgrade and the Gatton Women's Correctional Centre.

**MULHERIN RIGGING & CRANES PTY LTD**  
PO Box 693  
Oxenford QLD 4210  
t. 07 5529 7716  
f. 07 5529 7776  
e. [admin@mulrig.com.au](mailto:admin@mulrig.com.au)  
[www.mulrig.com.au](http://www.mulrig.com.au)

Princess Alexandra Hospital, QLD

