



A STANDING OVATION

The \$30M Blundstone Arena new Western Grandstand and Administration project consists of the demolition of existing grandstands, construction of a new Western Grandstand, 3-level administration block, basement car park and concourse.

MAIN CONSTRUCTION COMPANY : Vos Construction and Joinery
CONSTRUCTION VALUE : \$30 million
COMPLETION DATE : December 2014
ARCHITECT : ARTAS Architects & Sutera Architects



Now one of the best boutique sporting grounds in the world, the Blundstone Arena has undergone various redevelopments over the years, the most recent involving a new western stand.

This addition has seen the ground's capacity increase to 20,000 and includes state-of-the-art public, corporate and media facilities. A new function space has been included, catering for 450 people, with views of the Derwent River and Mount Wellington. The facilities for both AFL and cricket players and coaching staff have been enhanced with new practice areas, change rooms and coaches' boxes being housed in the new stand.

As well as creating a landmark sporting venue, the redevelopment gave a significant boost to the Tasmanian construction industry, creating over 300 jobs during the construction phase. Further employment opportunities will be generated at the facility to cater for the increased number of events and functions that are now available, including three matches during the 2015 ICC World Cup.

Vos Construction and Joinery were the preferred building contractor for the \$30 million redevelopment and they directed the demolition of the existing grandstands, the construction of the new Western Grandstand (4,500 seats), the new three-level administration block, a basement car park and concourse, the siteworks and associated landscaping. Over thirty different contractors worked on the project, including subcontractors, service consultants, architects, and the superintendent.

Work commenced in July 2013, and Vos continued work on the site while accommodating the client's needs throughout the 2013/2014 cricket season, as well as AFL games, with minimal disruption thanks to continuous contact with the client.

A family company, the Vos Group's history spans back to 1954 where it began in retail before branching out into construction and joinery at the turn of the century, and consequently rebranding as VOS and Joinery. Today the company has over 200 employees and boasts revenues of over \$100

million, cementing their position as one of Tasmania's leading building companies.

Vos pride themselves on their strong work ethics and loyalty. Their work force consists of many long-term employees who have been with the company for 35 years or more. Their stable and loyal workforce provides the company with known skills, abilities and outcomes, resulting in quality work, completed on time regardless of the program. Vos have a respect for their clients' requests and expectations and consistently deliver above and beyond them.

Vos are able to provide a variety of services to their clients, including project management, construction, joinery, shop fitting, glazing and bench tops, with their shop fitting and joinery business units also servicing mainland Australia. Further projects Vos are currently working on in southern Tasmania include the new Toll Transport Hub; Moonah Arts Centre; Freemason's Nursing Home; and the Wellington Centre Women's and Children's Clinic eighth floor fit out. They also have a number of projects in the north and north west

of the state being undertaken by the Launceston and Devonport business units.

The type of projects VOS engage in are varied, from nursing homes, hospitality, and industrial to sporting complexes, offices, shop fitting and joinery. Their expertise across the board has been recognised with a number of awards and nominations, such as winning the 2013 Master Builders National Excellence Award – Workplace Health & Safety, for the Sorell Council Administration Centre. 2013 also saw them nominated for the National Commercial/Industrial Construction Award (\$5 million – \$10 million), the National Civil / Infrastructure Award (Under \$25 million), and the National Commercial Master Builder of the Year.

For more information contact VOS,
phone 03 6398 8300, fax 03 6398 8333,
email admin@vosconstruction.com.au,
website www.vosconstruction.com.au





WEATHERFOIL CAN DELIVER

Having been in operation since 1979, Weatherfoil have evolved from being a standard sheet metal fabricator to offering their clients a diverse array of services, including air conditioning, public art fabrication, ductwork, stainless steel fabrication, flue systems, architectural metal fabrication, and engineering metal fabrication.

When Weatherfoil became involved on the Blundstone Arena redevelopment, the project was initially over budget. Thanks to Weatherfoil's local knowledge and extensive past experience, they provided a number of suggestions that provided considerable cost savings, whilst still maintaining a high level of quality.

A team of 23 Weatherfoil employees and subcontractors worked on the project, which entailed providing and installing all air conditioning requirements, which consisted of a standard two-pipe system, as well as the exhaust systems, and kitchen canopies.

Although the Blundstone Arena project was not specified as a BIMS project, the architects' and consultants' drawings were produced in 3D. Weatherfoil took the opportunity to continue this method through to their fabrication and installation drawings, which allowed for an excellent base to test and gain valuable experience using their BIMS software—a benefit for future projects where BIMS compliance is a requirement.

Weatherfoil is proud to also be working on the NBN – Satellite Earth Station at Castle Forbes Bay, duct manufacture for Incat, metal artwork for a local artist to be displayed in Victoria, and signage and interpretation works for Port Arthur.

Weatherfoil have also provided their airconditioning expertise to projects such as Royal Hobart Hospital Wards Block, the MONA Museum and Library, and Hobart Magistrates Court. They have also built and

constructed the smoke exhaust system serving the turbine hall of the unique Gordon Power Station, as well as having provided their services to Australian Antarctic Division Headquarters and Launceston Transit Centre, to name but a few.

After recognising the need to diversify, due to a limited island market, Weatherfoil has experienced significant growth. They operate out of their modern facilities in Derwent Park and have the expertise to service many areas including industrial and process ventilation, gas installation, architectural metalwork, food and catering grade stainless steel fabrication, all types of jobbing and aluminium fabrication, public art fabrication, as well as traditional air conditioning and sheet metal activities.

Weatherfoil's capabilities and imagination exceed traditional contracting and manufacturing, and they specialise in finding solutions and applying skills to specific tasks, from the design stage through to manufacture, installation and commissioning. Weatherfoil also have the sheetmetal expertise to fabricate prototypes from freehand conceptual drawings, creating a quality finished product.

Striving to deliver on time, together with satisfying their clients' requirements and expectations, Weatherfoil can be relied upon to provide accurate assessment and time frames. They deliver complete drafting and sheetmetal metal manufacture in-house, allowing for broader control over key elements critical to meeting installation targets. Their growth and strong commitment to quality is demonstrated through their solid reputation of integrity and customer satisfaction.

For more information please contact Weatherfoil Pty Ltd, 3 Sunmont St, Derwent Park TAS 7009, phone 03 6208 2300, fax 03 6272 8170, email mailbox@weatherfoil.com.au, web www.weatherfoil.com.au



TASMANIA'S DOORWAY

Tasmanian fire Doors is a family run business and has been since 1985. Colin, Sally, their sons Warrick and Jono and their crew of loyal workers pride themselves on the quality of workmanship and the fact that they Manufacture and deliver state wide.

They specialise in the manufacture of fire and architectural doors, including metal clad doors, security doors and custodial doors. They also manufacture wooden and pressed metal door frames along with fire rated windows. Tasmanian Fire Doors also supply

a range of fire sealants and pillows. They are licensed to make Pyropanel products.

The business prides its self on ability and expertise within the door manufacturing industry with Colin having been with the firm since inception. The Blundstone Arena Project has been a large but manageable for this experienced team.

Further projects that Tasmanian Fire Doors are currently working on include McKillop College, Bathurst Street Car Park and Launceston Remand Centre, all the while maintaining their continued supply to their regular customers.

For a complete security solution, for homes or businesses, Tasmanian Fire Doors ensure their products stand the test of time, offer the highest levels of security, while still maintaining an aesthetically pleasing appearance. This, coupled with their competitive pricing policy and exceptional customer service, guarantees their customers are getting the best product at the best price.

They extend their service to include custom made solutions to cater for unique projects, and are able to deliver state-wide with their own transport.

For more information,contact Tasmanian Fire Doors, 21-23 Stony Rise Road, Devonport TAS 7310, phone 03 6424 7666, fax 03 6423 216, email info@tasmanianfiredoors.com.au



A GRAND DESIGN

The Blundstone Arena project in Tasmania saw a successful Joint venture between ARTAS Architects and DWP Suters. Under the direction of two key staff, Scott Curran as Project Architect and Mike McGrath as Design Architect.

The project saw the construction of a new grandstand with connections between the two existing grandstands.

ARTAS and DWP Suters worked carefully with the design to provide the corporate functions area with an ideal view of the sporting venue along with the added benefit of views across the Derwent River and Mount Wellington. This spectacular outlook is quite unique in a sporting facility.

To provide weather protection, the roof has been designed to wrap over the back of the building.

Both ARTAS and DWP Suters are proud to be a part of this iconic sporting arena that will see local, national and international cricket and AFL games presented. The development is set to be complete in time for the 2015 World Cup

ARTAS Architects was founded in Launceston, Tasmania in 1989. The company has successfully expanded to now operate in Hobart, Melbourne, Brisbane and Sydney.

The company offers a diverse range of architectural capabilities including major public buildings, private dwelling commissions,



heritage renovations and restorations, private and government schools, industrial and commercial developments.

ARTAS Architects is proud to boast a team of experienced staff and hands-on principals who bring over 50 years of Australian and international experience to the company. The principles work directly with clients and take a personal interest and responsibility for the design, project management and seamless completion of all projects.



For more information contact ARTAS Architects, 10-14 Paterson Street, Launceston TAS 7250, phone 03 6331 2731, email info@artas.com.au, website www.ARTAS.com.au

ANOTHER SUCCESS FOR THE STEEL MASTERS

Family-owned business, **Walter Welding and Sheetmetal**, have been fabricating, manufacturing and installing specialised stainless steel and sheet metal products throughout Tasmania and interstate since 1998.

The team of fifteen specialise in commercial/architectural kitchens; commercial display units; food processing; canopies; urinals; commercial and domestic handrails; balustrades; and ModWood Benches and Seating.

Their expertise and experience made Walter Welding and Sheetmetal the obvious choice to manufacture and install the hundreds of metres of handrails and balustrades on the Blundstone Arena project.

As one of their specialities, they can provide stainless steel, mild steel, aluminium, powder coated custom fabricated handrails, and balustrades including wire rigging, as well as supplying and installing the top rails for glass balustrades. Walter Welding and Sheetmetal provided all of the handrails and balustrades throughout each grandstand—up every walkway and across the sections, either in galvanised steel or stainless steel, which were prefabricated off-site, then fixed and polished onsite.

Further projects Walter Welding and Sheetmetal are proud to have been involved in include Risdon Prison, where they supplied all security grills and vanity units for the cells, Cambridge Production Kitchen at Royal Hobart Hospital, and they have also fitted out the bars and kitchens at MONA. Additionally, they have recently started manufacturing stainless steel rubbish bins for councils, which has proven to be a very successful venture.

Walter Welding and Sheetmetal have also worked with Taylor Brothers on AWD ship refurbishments in South Australia. They won the tender

to manufacture all of the stainless steel requirements, including benches, drawers, sinks, and kitchen fitouts, which were all made in modules and sent over for fit out.

Walter Welding and Sheetmetal were the proud providers of the steelwork in the landmark artwork, *Beacon*, at Lower Sandy Bay, Hobart. The technical process of achieving the correct angles to provide the right effect was developed as they manufactured it, in consultation with the council and the artist.

The team at Walter Welding and Sheetmetal can assist in all areas, from measure and quotes, to design and specifications, as well as collaborating with your architect/joiner to provide assistance and advice from manufacture through to installation.

For more information contact Walter Welding & Sheetmetal, Unit 1/82 Cowle Road, Bridgewater TAS 7030, phone 03 6263 6397, email enquiries@walterwelding.com.au, website www.walterwelding.com.au



TASSIE'S ONE-STOP PLUMBING SERVICES

Howrah Plumbing has experienced rapid growth since its inception back in 1986, and is now one of Tasmania's largest and most respected plumbing companies, servicing all corners of the island with bases in Burnie and Hobart.

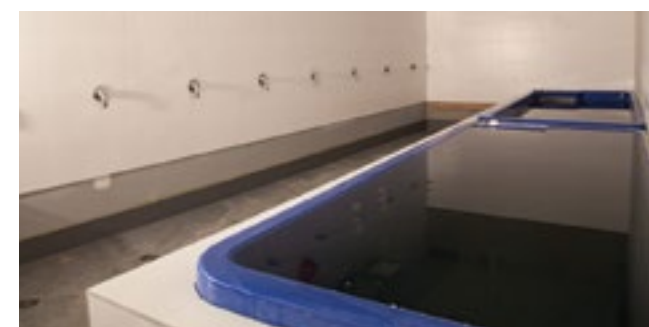
Howrah's construction team's expertise was called upon for the Blundstone Arena project, where they were involved from the start, initially offering cost saving advice and recommendations to the client, VOS.

The plumbing works undertaken by Howrah on the project included: domestic hot and cold copper pipe work, sewer drains and HDPE trade waste drainage to the commercial kitchens and kiosks; LPG gas service to the hot water plant and commercial kitchens; supply and installation of fixtures to public amenities and the player change rooms, including two ice baths for player rehabilitation; commercial kitchens; a roll grooved galvanised fire service; as well as all the civil drainage and water services.

Howrah's foreman worked closely with VOS, the hydraulic engineers and other trades on site to limit the problems that are common on all large projects. Service clashes were avoided thanks to all trades communicating via sub contractor meetings and regular toolbox meetings. This assisted in successfully meeting the tight time lines, ensuring the arena could still be utilised for AFL games later in the year.

The broad range of the hydraulic package enabled Howrah the opportunity to have their apprentices work on a project that gave them an all-encompassing overview of plumbing within the construction market. Their foreman took the opportunity to train the apprentices in understanding the finer details of reading plans, the importance of OH&S, and completing paperwork that is required from both the client and builder.

Howrah's construction team consists of experienced foreman, leading hands and plumbers, together with estimators and building services consultants who ensure customers are provided with a one-

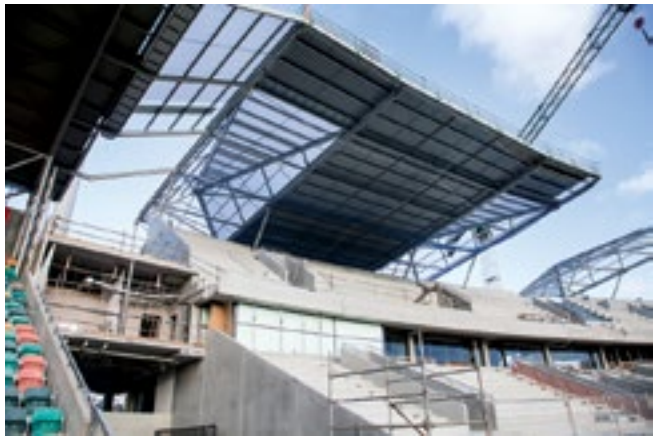


stop service. Offering timely tender quotations and design, construction and budget assessments for projects, including all that is required to see a project through from fruition to completion.

Together with the construction division, the company also comprises of a maintenance division (operating on call 24/7), wastewater division, roofing services, domestic and commercial gas services, and hydraulic consultancy.



For more information contact Howrah Plumbing, 3/10 Electra Place, Mornington TAS 7018, phone 03 6244 7022, email office@howrahplumbing.com.au, website www.howrahplumbing.com.au



GRANDSTAND FINISH

FHRC was appointed to carry out works for the new grandstand construction at Blundstone Arena. Headed by Frank Hill, detailed works included the installation of 40mm Lexan Thermoclick polycarbonate sheeting to the pyramid roofs and wall cladding to the rear façade. Kliplok 700 Hi-strength roof sheeting was used for the flat pitch roof areas of the grandstand.

Blundstone Arena is the first major project in Southern Tasmania to use Ampelite Lexan Thermoclick roof & wall cladding. Ampelite is the largest and most experienced fibreglass and polycarbonate roof sheet manufacturer and distributor in Australia.

Lexan Thermoclick sheet, mainly used in facade and wall applications, is made up of a 40mm thick, UV protected, multiwalled polycarbonate panel. The 40mm air cavity provides outstanding light transmitting insulation and substantial energy savings are usually obtained.

Due to the angles, and different shapes of the rear facade, the thermoclick cladding proved to be quite a complex feature. FHRC used their extensive experience to provide an exceptional finished product.

FHRC undertake commercial roofing projects of all sizes throughout the greater Hobart area.

For more information contact FHRC Pty Ltd, PO Box 1546, Eastern Shore DC TAS 7018, phone 03 6244 7722, email roofing@fhrc.com.au



A STAINLESS REPUTATION

Hill Sheet Metal is a family owned business with a commitment to providing a high level of quality service and workmanship. After more than 20 years in business, Hill Sheet Metal offers a standard of work and industry expertise that is second to none.

The team was recently appointed to undertake the supply and fit of stainless steel to the kitchens, bars, toilets and washrooms for the Blundstone Arena redevelopment.

With a team of 10 highly experienced staff dedicated to this project, Hill Sheet Metal manufactured a large 18 L/m stainless steel urinal that was fitted across 4 walls.

Blundstone Arena is located in Bellerive, Hobart and is the home of Tasmanian Cricket. The much needed \$30 million dollar project will increase the capacity of Blundstone Arena to 20,000 and includes state-of-the-art public, corporate and media facilities.

Hill Sheet Metal has gained a reputation for producing unique architecturally designed items that meet both commercial and residential needs.

Offering a diverse range of products and services, Hill Sheet Metal capabilities include the following:

- Kitchens - Benchtops - Sinks, Splashbacks, Canopies, Legs & Frames
- Plumbing Fixtures - Urinals, Troughs, Shower Bases & Grease Traps
- Hand Rails - Rails & Balustrades, Architectural & Wire Rigging
- Food Display Units
- Custom Made Tanks – Stainless Steel & Aluminium

Hill Sheet Metal was please to see many local jobs created during the redevelopment of Blundstone Arena.

For more information contact Hill Sheet Metal, 28 Ederslie Road, Brighton TAS 7030, phone 03 6268 1833, email hill_sheet_metal@bigpond.com.au

