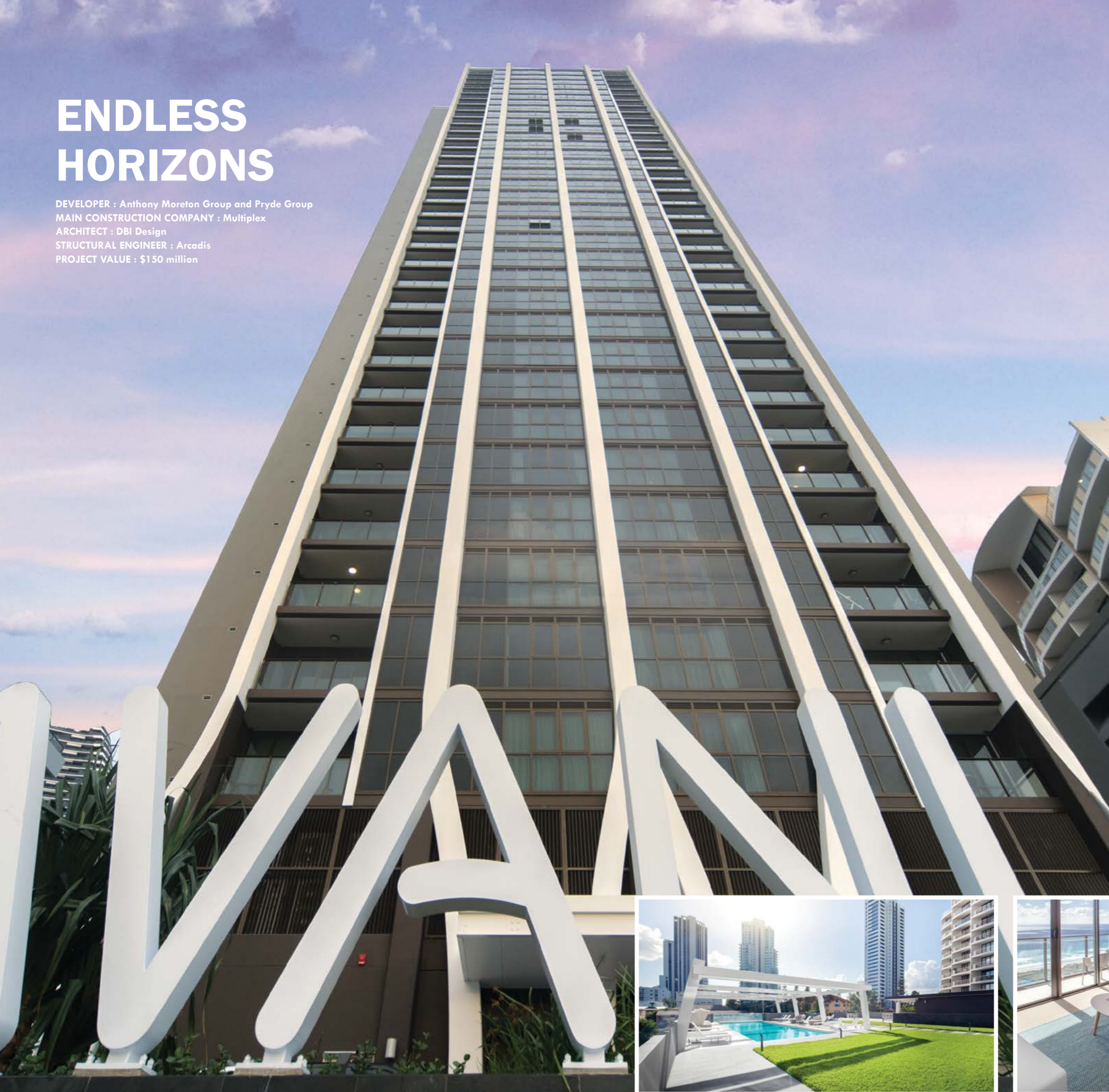


ENDLESS HORIZONS

DEVELOPER : Anthony Moreton Group and Pryde Group
MAIN CONSTRUCTION COMPANY : Multiplex
ARCHITECT : DBI Design
STRUCTURAL ENGINEER : Arcadis
PROJECT VALUE : \$150 million



The Beach Apartments project at Broadbeach is a \$150M sophisticated building comprising 219-apartments over 35 magnificent levels, with extensive glass windows, sun-drenched balconies, a stunning façade, and podium level terrace offering dramatic view corridors.

Anthony Moreton Group, a successful boutique property development, investment and finance company, has delivered The Beach Apartments project at Broadbeach.

In a joint venture with the Pryde Group, Anthony Moreton Group has produced a significant addition to the Gold Coast's stock of high end accommodation in time for the Commonwealth Games.

The Beach is a stylish and sophisticated building at the nexus of culture, recreation and entertainment in one of Australia's favorite playgrounds. The 219-apartments spread across 35-levels are a striking addition to Broadbeach's iconic skyline. Apart from the obvious Commonwealth Games drawcard, the project itself has stunning features which will sustain a long and productive market appeal in keeping with the desirable Broadbeach contemporary lifestyle.

The one and two-bedroom apartments all have balcony views plus a beautifully designed layout with high end features throughout. These include floor to ceiling tiling in all bathrooms, European appliances, 20mm reconstituted kitchen benchtops, ducted air conditioning and soft-close drawers to all joinery. Around 70% of the apartments have access to ocean views with the balance enjoying hinterland or city vistas.

The project provides a range of facilities to residents including a lobby reception area, a podium terrace featuring a 20m lap pool, Zen garden, BBQ facilities, extensive landscaping and, a residents' lounge.

Anthony Moreton Group's Chief Executive, Tony Hazell said that The Beach was the only new residential high rise property to be completed and operational in Broadbeach prior to the Commonwealth Games.

"We are very proud of that achievement and expect a long term impact from the Games on visitor occupancy and residential investment demand. There is no doubt that The Beach has added to the attractiveness and future potential growth of the area."

Built by Multiplex, the project was completed four months early, enabling residents to occupy prior to Christmas. Around 1,400 local jobs were created during construction.

Local suppliers were also supported, with 15,510m³ of concrete sourced from Hymix and another local business, Neumann Steel supplying the 2,200 tonnes of steel used in the project.

The residential component of The Beach is being operated and managed by Minor International under its 5 Star 'AVANI' brand, its first in Australia. Minor International is fusing its fresh, modern philosophy and brand concepts with the developers' overall master plan for a lifestyle focused environment at The Beach Apartments.

Tony said that "The Beach development represented another successful joint venture with Pryde Group, which is fundamental to the outcomes we want to achieve at Anthony Moreton Group."

Operating since 2001, Anthony Moreton Group has a strong multi-disciplinary team covering property development, investment and finance. It has a pro-active and innovative approach to investment opportunities, as evidenced by the highly successful 'The Beach' development.

For more information contact Anthony Moreton Group, Level 20, 324 Queen Street, Brisbane QLD 4000, phone 07 3100 1300, fax 07 3100 1301, email info@anmor.com.au, website www.anthonymoretongroup.com.au



Below Queensland Facade Systems 6,800m² of high performance double glazed Low E for the buildings striking façade.

Queensland Facade Systems (QFS) has become the first choice for high performance glazing solutions.

The Southeast Queensland company has taken just five years to become one of the most recognised glazed window and door subcontractors to the high rise residential construction market.

With such an impressive expansion, Alspec Australian designed and tested systems are now being manufactured under licence both here, at home and in China. Nationally, this encompasses supply and installation subcontracting to Southeast Queensland and supply only to the rest of Australia.

Within the last 12 months QFS have completed a number of outstanding properties, including the The Beach apartments at Broadbeach and FV Gurner Towers 1 and 2 in Fortitude Valley, both contracted by Multiplex.

The Beach apartments features 35-levels housing 219 apartments, and is a sophisticated blend of glass windows, sunlit balconies, feature façade and with a podium level terrace encompassing varied viewpoints. For QFS, the project called for the design, manufacture and installation of Alspec Hunter Evo and Proglide systems, including an integrated aluminium corner box feature.

QFS supplied 6,800m² of high performance double glazed grey Low E, in awning windows and sliding doors to offer environmental comfort and energy savings, acoustic reduction from the Gold Coast traffic noise and tested high weather performance, to comply with the Queensland Code requirements.

The FV Gurner project – also contracted by Multiplex – is the first two of three 25-storey hotel and residential apartment towers on the edge of the Fortitude Valley Entertainment Zone, with breathtaking views of the Story Bridge and Brisbane City.

QFS supplied and installed over 27,000m² of standard and custom designed Alspec glazed window and door systems. One tower in bronze/gold double glazed Low E and the other in silver double glazed Low E. Most levels include a secondary glazing system on the interior side of the façade,

which ensures whisper quiet rooms. QFS also supplied perforated aluminium privacy screens for the development.

QFS have been operating out of Yatala since 2012 and have recently moved to a larger facility across the highway at Stapylton between Brisbane and the Gold Coast.

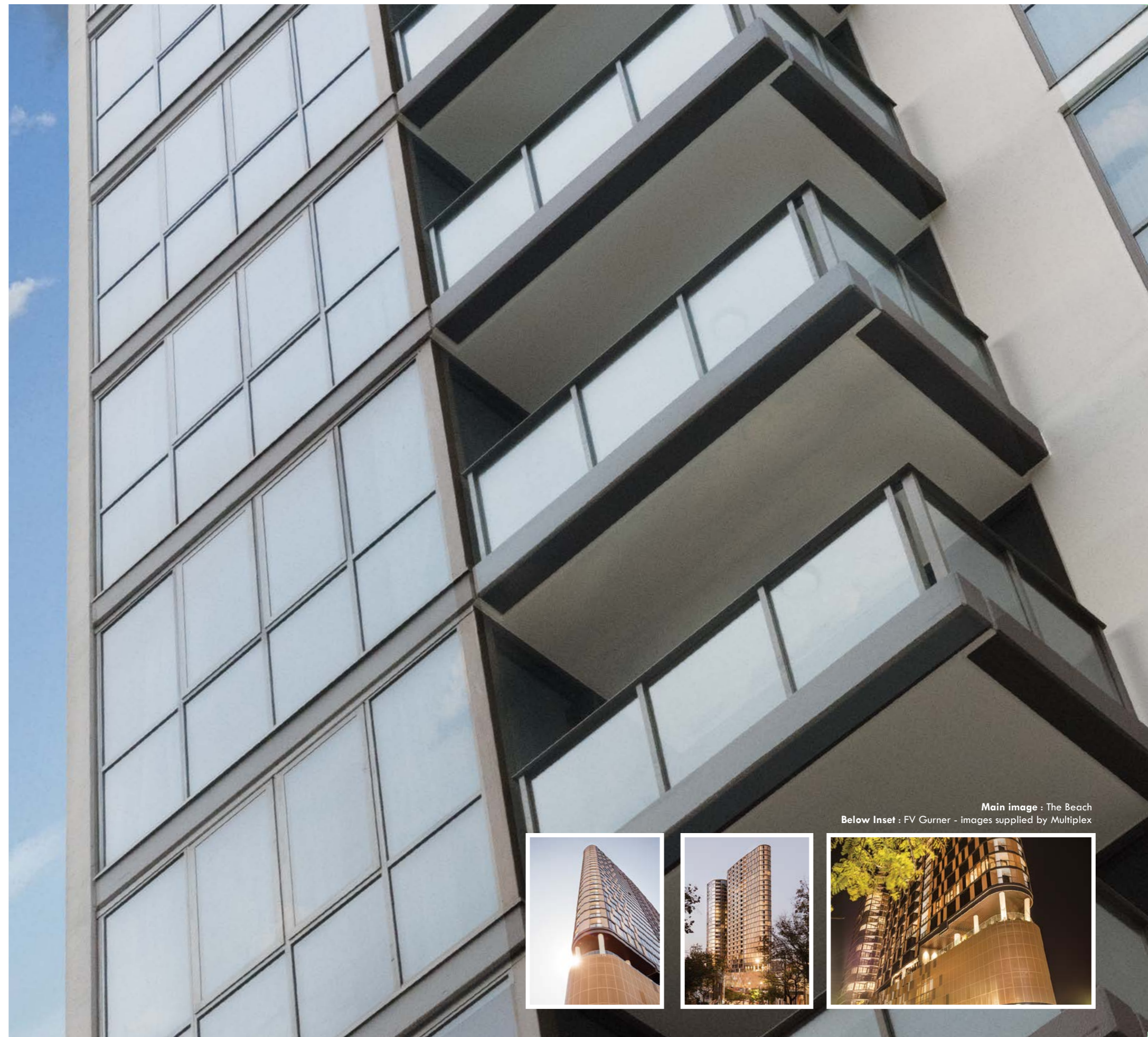
Drawing on 40 years of industry experience in the construction and glazing industry. Their design and innovation is driven by collaboration with Alspec, and the conviction of the QFS team to deliver a cost effective quality product and service, to the satisfaction of their clients. The specific industry experienced directors lead a team of estimators, drafters, production coordinators, project managers and logistics professionals all accomplished in their field of expertise.

QFS have recently completed a number of projects including: Ivy and Eve at South Brisbane - twin 30-storey apartment buildings featuring 11,700m² of glazing, by Hutchinson Builders; One William Street Retail Pods by Multiplex; Rhapsody Surfers North – 41-storey apartment building with 8,000m² of glazing by Multiplex; Soda Apartments at South Brisbane – 19-storey apartment building with 3,700m² of glazing by Hutchinson Builders; The Johnson Art Hotel – 6,000m² of glazing by Maxcon; The Green Apartments at the RNA – five multi-storey apartment buildings with 6,660m² of glazing by Lendlease; as well as the Rydges RNA Hotel, the prestigious 26-storey Sanbano Apartments at Coolangatta and many more.

Queensland Facade Systems are continuing to gain a reputation for quality low cost design solutions and access to the best of the world's suppliers.



For more information contact Queensland Facade Systems, 1/75 Christensen Road, Stapylton QLD 4207, phone 07 3380 1000, email enquiries@qldfacades.com.au, website www.qldfacades.com.au



Main image : The Beach
Below Inset : FV Gurner - images supplied by Multiplex