



# BUILDING PRODUCTS GUIDE

FLOORING

HEATING

COOLING

WALLS

STRUCTURAL

WATER

PROOFING

INTERIORS

SAFETY

## Our studs are the strong, silent type.



(Which makes them incredibly attractive)

Designed to be not only stronger, but safer, our range of Hemmed Stud & Track sections help reduce handling injuries on site.

The hemmed return lip increases rigidity, preventing unwanted rotation as well as eliminating sharp edges.



The vertical rib in the stud face allows the wall linings to be placed centrally, ensuring easier and faster fixing, while the deeper knurling provides better screw location and retention. What's more, our studs lock perfectly into each other, creating the best boxed stud profile in the market.

**RONDO®**  
[www.rondo.com.au](http://www.rondo.com.au)

RONDO® is a registered trademark of Rondo Building Services Pty Ltd. ABN 69 000 289 207.



ARCHITECTURAL GRATES + DRAINS



# Grate lines.

The finest linear grate selection from the people who invented them.

Stormtech grates and drainage systems draw a perfect line connecting unmatched durability, superb craftsmanship and world class design.

Give your bathroom or courtyard the best grate selection available, or create contemporary transitions from indoors to outdoors with our seamless threshold range.

Designed and manufactured in Australia from marine grade stainless steel, Stormtech remains the gold standard for design and sustainability with full Greentag certification.

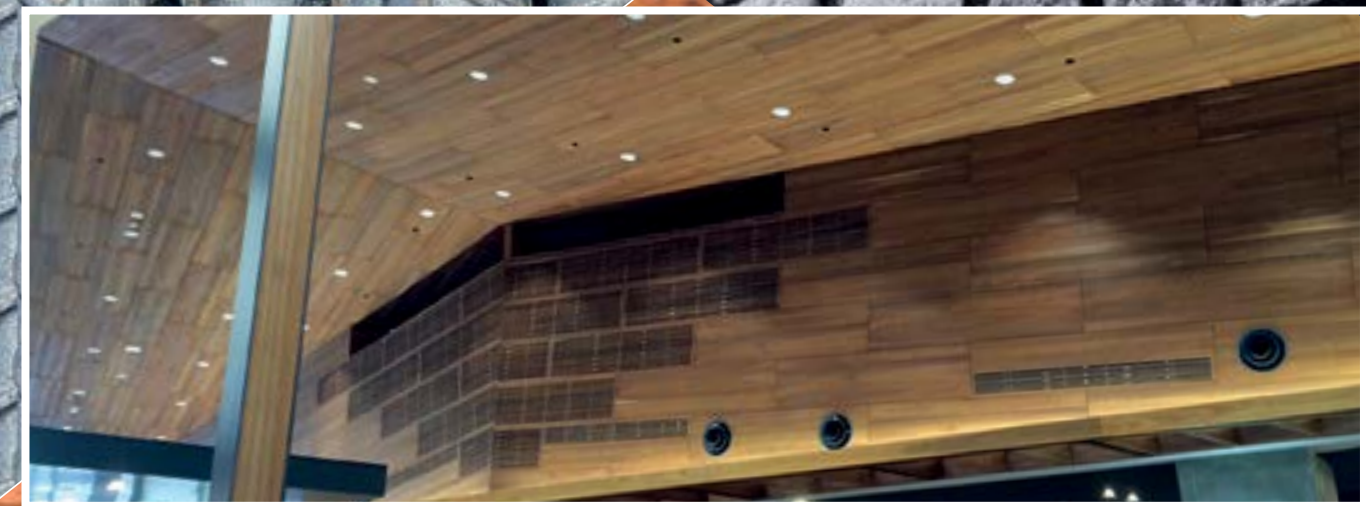
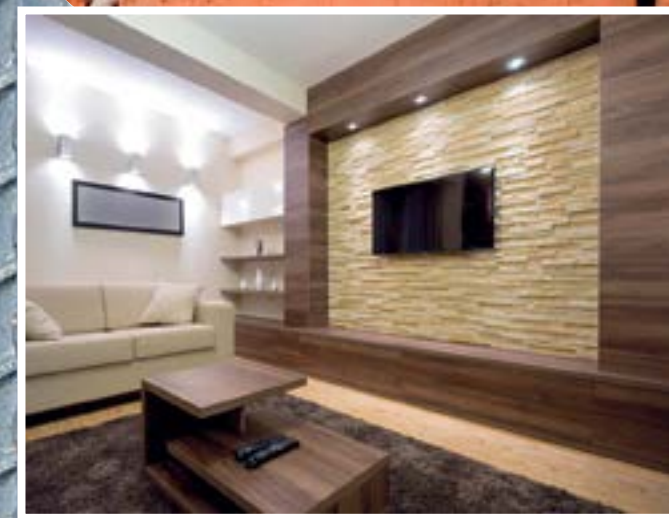
View our complete selection on the Stormtech website, and match the perfect drain to your design needs.

Visit us at [stormtech.com.au](http://stormtech.com.au) for tools + inspiration.

- Bathrooms
- Showers
- Pools + Surrounds
- Thresholds
- Doortracks
- Special Needs Access



Telephone 1300 653 403



Ventech Solutions offer the construction, design and architectural industry numerous options for high quality surface finishes in a broad range of panel products featuring natural and reconstituted timber veneers. We are able to deliver large and small scale projects on time and on budget without substituting quality. We are backed by Europe's largest panel manufacturer and all panel products and veneers are certified PEFC and are rated either E0 or contain no formaldehyde emissions.

- Our current projects and products being utilised include:
- Four Points Sheraton - Natural Rift Oak veneer
  - Bendigo Hospital - Shellgrit reconstituted veneer
  - Marina Towers Docklands - Two custom colour reconstituted veneers
  - Assembly Apartments - Greystane reconstituted veneer
  - Mainfreight Head Office - Natural Spotted Gum perforated panels
  - Chadstone Shopping Centre - Natural Crown American Oak panels
  - Williams Landing Shopping Centre - Natural Spotted Gum ceiling panels
  - Trump Towers USA - Natural Dyed Silver Sheen veneer
  - Charles Sturt University - Fire rated Melamine MDF

- Bangaroo Sydney - Natural Crown Blackbutt veneer
- Amcal Chemist Australia wide - Grooved Blackcore MDF Melamine timber grain

Our ability to deliver substantial projects Australia wide with extremely competitive pricing, makes us Australia's fastest growing company utilising architectural surface panels with timber veneer and melamine textured finishes. With over 200 natural timber veneer species, 50 reconstituted veneer colours, 8 textured melamine options and the ability to offer custom reconstituted veneer colours for large projects. We are confident Ventech can find a solution for your veneer and special panel requirements.

We offer a full consultation service, sample books for veneer and board products, polished samples and highly competitive price points.



For more information contact Ventech, 32 Thornycroft Street, Campbellfield VIC 3061, email [solutions@ventech.com.au](mailto:solutions@ventech.com.au), website [www.ventech.com.au](http://www.ventech.com.au)





Construction is the most important industry in Australia and is an integral part of the economy with 15% of Australia's GDP comprising of property, design, construction and facilities management. With green construction pushing innovation, small to medium-sized enterprises are supporting the industry with their products.

# FLOOR HEATING

a renovation must have

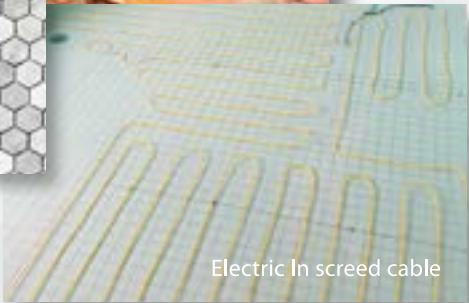


“The experts in **underfloor** heating...”

Hydronic In slab pipe



Floor Heating systems are becoming the chosen heating option for renovations and new builds across Australia. The reason is simple – they are invisible, they are quiet and they generate no dust. The systems can be installed with most floor selections and they are low heat and efficient heating systems for residential and commercial spaces. From the smallest bathroom to a factory floor, there are floor heating systems suitable for any project. They can be supplied as DIY kits or installation can be arranged. Whether they are hydronic or electric Comfort Heat has the full range of options for your project and can provide expert advice and designs.



Electric In screed cable

Find out more at [www.comfortheat.com.au](http://www.comfortheat.com.au).

Send in plans for an obligation free quote.

Comfort Heat Australia – Everything Floor Heating



MCD5

MTD2



**ComfortHeat**  
Superior Floor Heating Systems

[www.comfortheat.com.au](http://www.comfortheat.com.au)  
[sales@comfortheat.com.au](mailto:sales@comfortheat.com.au)  
Local call: 1300 13WARM





**Project Name:** Waurn Ponds Police & SES Complex  
**Location:** Waurn Ponds, VICTORIA  
**Client:** State Government, Victoria  
**Builder:** Lyons Constructions Pty Ltd  
**Architect:** Strata PNA Architects



**Project Name:** Westfield Garden City  
**Location:** Mt Gravatt, QUEENSLAND  
**Client:** Scentre Group  
**Builder:** Westfield Design & Construction Pty Ltd  
**Architect:** Scentre Group



**Creating concrete stories™**

Fine architecture often conceals within it a fascinating story. The story can be emphasized with the use of graphic concrete™. Use of different aggregates and pigments adds a new dimension to the creativity. With the help of GCAccredited partners, everything is possible.



To learn how to achieve the best results for your project using ramsetreid™ Accredited Partner Precasters, visit us at [www.reid.com.au](http://www.reid.com.au) or contact us via [info@ramsetreid.com.au](mailto:info@ramsetreid.com.au)





# CAR PARK BARRIERS

## ZEE Park and Spring Steel Buffa

**Ingal Civil Products are Australia's largest manufacturer of car park barriers. Our range is tested and compliant to AS1170.1. Barriers are available with handrail and Building Code of Australia compliant anti-climb mesh. Custom design and integration with façade design is also possible.**

### Local Manufacture

We manufacture our barrier rails and posts at our state of the art facility in Sydney. This enables us to react rapidly to production requirements for large projects. In-house galvanizing allows us to maintain strict quality control – while keeping costs to a minimum. We use Australian steel for all components, and Australian Zinc in our galvanizing.



### Spring Steel Buffa

Spring Steel Buffa is an energy-absorbing, self-restoring barrier system. This system is able to withstand multiple impacts with minimal damage to the impacting vehicle, the barrier, or the building structure. Spring Steel Buffa transmits very low anchor forces, and is ideal for post-tensioned suspended slabs or com-floors.



### ZEE Park

ZEE Park is a high-strength, semi-rigid barrier system where additional capacity is required. ZEE Park has been designed and tested to exceed the required capacity of AS1170.1 with ease. This barrier is also available with handrail and anti-climb mesh, which is also available in a range of architectural designs. Suitable for edge protection close to structures or building facades, the predictable yielding design prevents damage to footings with larger impacts.



All barriers and screens are available in safety yellow powder-coated finish, or a range of other colours to suit your design palette. We are proud of our reputation as a supplier of innovative, high quality products backed by our professional sales representatives. Customer service is a high priority to Ingal Civil Products and in keeping with this philosophy we have established distribution centres and sales offices throughout Australia and New Zealand. This ensures that the company's sales representatives are well positioned to service your needs with prompt attention.

**Contact Ingal Civil Products to discuss your requirements, and discover which barrier system will best suit your needs.**

[www.ingalcivil.com.au](http://www.ingalcivil.com.au)

Ingal Civil Products

• Sydney (02) 9827 3333 • Brisbane (07) 3489 9125  
• Melbourne (03) 9358 4100 • Adelaide (08) 8169 2300  
• Perth (08) 9452 9111 • Newcastle 0400 235 883  
• Wagga 0427 779 588 • [sales@ingalcivil.com.au](mailto:sales@ingalcivil.com.au)



M1 Matrix Hammertone Rubber Tiles



H1 Hammertone Solid Colour



DIY Custom Colours



K2 Studded Rubber Tiles

**Kenbrock Flooring is a fully 'Australian owned' company at the innovative forefront of technologically advanced resilient flooring.** The company originates and distributes Resilient Floor Coverings specialising in Residential and Commercial Luxury Vinyl Planks and Tiles, Commercial Sheet Vinyl, Residential Cushion Vinyl plus Kinetics Commercial Grade Rubber Flooring and Tactiles.

Kenbrock has been involved with the manufacture and distribution of Rubber Flooring in Australia since the 1960's and continues to be an innovator in this field. Kenbrock introduced the original Pirelli Rubber Flooring to Australia and is the only company in the world ever licensed to produce Pirelli product. Our new range of K2 Studded Rubber is still based on the original Pirelli design. Other Kinetics ranges available are H1 Hammertone solid colours, M1 Matrix and DIY custom colours. Kinetics offers exceptional performance and design options for many commercial applications.

K2 Studded rubber tiles have maximum thermal and acoustic insulation and perform remarkably well in all high traffic areas including airports, schools, shopping centres, museums, transportation, stairways and ramps. H1 Hammertone Solid Colour is finished with a Hammertone texture and can be combined with M1 matrix (colour chips) to create

highlights and divide areas within an installation. This has been embraced by many creative designers in suitable residential projects, in Gyms and sporting venues, offices and department stores. M1 Matrix Hammertone rubber tiles have a low VOC formulation, are highly durable and feature superior abrasion resistance for a long lasting and high quality appearance. They perform well in heavy duty areas, including shopping centres, educational & health care facilities, hospitals and day care centres. Kinetics Hammertone ranges (H1, M1 and DIY) feature an R10 slip rating, are non porous, easy to clean and maintain, and will not harbour bacteria. They contain a high percentage of virgin rubber and are therefore 100% recyclable and environmentally sustainable.

Kenbrock Kinetics also offers the DIY – Design It Yourself option where you can mix and match from 28 base colours and up to 3 of 10 chip colours to create a custom design. These can be created and viewed on our web site using the design tool in the commercial section of our website.

**For more information contact Kenbrock Flooring, VIC** - phone 03 9765 2222, fax 03 9765 2233, **NSW** - phone 1300 785 000, fax 07 3881 3287, **QLD** - phone 07 3881 1000, fax 07 3881 3287, **SA/TAS/NT/WA** - phone 1800 674 145, fax 03 9765 2233  
[www.kenbrockflooring.com.au](http://www.kenbrockflooring.com.au)



# Texture Panels

EXTRAORDINARILY REALISTIC

BUILDING PRODUCTS | ACE WATERPROOFING ←



Texture Panels is an affordable, light weight panel solution choice for a realistic look of brick, stone, timber, bamboo, concrete and metal finishes. Texture Panels are only limited to the designers / architects imagination to where they can be applied.

Suitable for indoor or outdoor use and are installed widely through out retail store fit outs, commercial and hospitality industries, trade shows, theme parks, portable buildings, modular homes, residential and sign industries, just to mention a few.

All our panels are individually moulded from natural products, to obtain their unique realistic appearance and offer a UV stability, insulation and sound proof properties, impervious to water, works well in all climates and are environmentally sound.

With Texture Panels being so light weight and easy to install, with our seamless interlocking design. This saves time and money, as there is no speciality tools or trades required for the installation.

We can also cater for special design requirements of your clients needs, by offering custom colours and even being able to produce prototype panels to suit all design aspects. (conditions apply)

Visit our website [www.texturepanels.com.au](http://www.texturepanels.com.au) or call 03 5278 2588 for further assistance with your next project.

[www.texturepanels.com.au](http://www.texturepanels.com.au) | 03 5278 2588



Ace Waterproofing Pty Ltd are specialists in the treatment of Rising Salt Damp and Damp repairs in South Australia. We are driven by a desire to find smarter, more effective and efficient ways to protect built structures from the damage caused by moisture and other external causes.

Ace Waterproofing are the exclusive National Distributors for the PLATON range of environmentally friendly waterproofing and protection products for below grade, retaining walls, cellars, and concrete. Suitable for commercial, civil and residential projects.

PLATON WATERPROOFING is a double dimpled HDPE membrane that provides protection to underground structure from backfill and lateral damp. The dimpled design creates an airgap that allows moisture to condense on the membrane and fall freely to the footing drain for removal. This dries out the wall in a way that no other technology can match.

The PLATON WATERPROOFING Membrane is fixed to the top of the wall so the wall can crack, shift and settle over the years without affecting its protection performance. Easily bridges 5-10mm cracks and is resistant to sharp objects and soil borne salts. It is commonly used to waterproof block walls, poured concrete, existing foundations and Insulated Concrete Forms (ICF).

PLATON STOP is a cushioning acoustic underlay and vapour barrier for use under floating timber floors such as laminate, bamboo or engineered wood flooring.

PLATON STOP has been specifically developed for floating timber floors as an effective barrier to moisture. It is three times as impervious to water vapour as 2mm sheeting so provides superior protection from moisture issues which may occur in existing slabs and also supports the natural drying process of newly poured slabs allowing fast track installation of new flooring. Floor coverings can be laid directly on top of PLATON STOP even with residual moisture levels as high as 5% for cement screed.

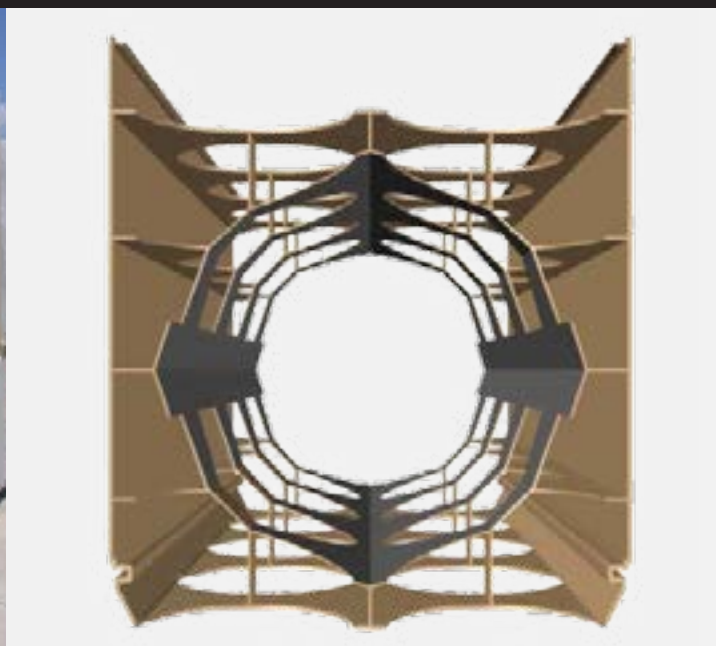
PLATON STOP also provides a soft, comfortable walking experience and reduces impact noise transmission by up to 19db (ISO 717-2). Suitable for multi-story construction, commercial fitouts and insurance repair work. Specified by Dinesen Timber Floating Floors for use when installing on concrete.

For more information/distributors contact Ace Waterproofing Pty Ltd, 244-246 Payneham Road, Payneham SA 5070, phone 08 8132 1166, email [terry@acewaterproofing.com.au](mailto:terry@acewaterproofing.com.au), website [www.acewaterproofing.com.au](http://www.acewaterproofing.com.au)



# THE ULTIMATE IN PERMANENT FORMWORK SYSTEMS

## DINCEL INTRODUCES THE 275MM PROFILE



- **GUARANTEED** waterproof basement / tank walls\*
- **INNOVATIVE RING FORM** works as a reinforcement and allows 230mm concrete slump single pour up to 4m\*
- Ultimate solution for **MAGNITUDE 9 EARTHQUAKES**
- Stronger unfilled profiles offer **IMMEDIATE EMERGENCY PROTECTION** against clay-soil failure in basement excavation and fall protection
- Replaces conventional columns and **CHALLENGES JUMP-FORM** in lift/stair shafts in up to 50 storey construction

\*When installed by an accredited Dincel Construction System installer.

Discover the Dincel Construction System profiles and possibilities at [www.dincel.com.au](http://www.dincel.com.au) or call 1300 DINCEL for further information.

**CALL US FOR YOUR  
NEXT PROJECT**

## SPEEDING UP HIGH RISES

**A new outstanding product from Dincel Construction System will see high rise development become even faster and more effective with the launch of the company's 275mm profile.**

Dincel Construction System is a permanent polymer formwork that is becoming the go-to product for developers looking to construct premium quality buildings quickly and cost efficiently. The new 275mm profile has an innovative internal ring form capable of resisting up to 230mm slump concrete when poured from a 4m height. When installed by a professional and accredited Dincel Construction System installer, the 275mm profile provides a 100% guaranteed waterproof solution for basements and tank walls.

These waterproof qualities are the perfect resolution to critical building issues, including concrete cancer, corrosion and mould and mildew. The product ensures a higher quality build with fewer defects and lower maintenance throughout the lifecycle of the building.

Manufactured in the company's Erskine Park factory, the launch of the 275mm profile provides a genuine alternative to traditional jump-form systems when constructing buildings up to 50-storeys.

Inventor and Chairman of Dincel Construction System, Burak Dincel, said there had been unprecedented demand for the company's product during the past 12 months.



"Our business doubled its sales growth in 2015, leading to additional production lines being installed in the Sydney factory and new distribution hubs opening in Queensland, Victoria and New Zealand," Burak, a practising structural and civil engineer, explains.

"The 275mm profile has been launched in response to demand from countries like Japan which require earthquake solutions, and local builders and developers who are keen to specify Dincel Construction System for high rise building projects. Our new wider profile is ideal for commercial buildings with shear walls, including the building's core construction (lifts and fire stairs), columns and blade walls up to 20-storeys higher than previously possible."

Construction speed is enhanced through Dincel Construction System's ability to uniquely snap into position to quickly build walls and columns while achieving an outstanding result.

Dincel's extensive product portfolio allows more clients to benefit from buildings that exceed quality and performance standards, while satisfying the most discerning engineers.

Their experience, performance and expertise ensures every job is handled with a professional approach and finished to perfection.



**For more information contact Dincel Construction System**  
101 Quarry Road, Erskine Park NSW 2759  
phone 02 9670 1633, website [www.dincel.com.au](http://www.dincel.com.au)



Water?  
[no mercy]

**SEALTAQ®**

- Adheres to wet and dry surfaces
- Fast & easy to apply
- Water and gas impermeable
- Long-term protection, does not age

**SEALTAQ® Aquablock**  
Sealing compound

- Seals running water leaks
- Inlets below groundwater level
- Wall penetrations inside buildings
- Multi-pipe & cable inlets

**SEALTAQ® Bands / Membranes**

- Leaking expansion joints
- Concrete to Plastic joints



Specialist Construction Systems & Materials  
**NEOFERMA**  
Innovation @work

For enquiries please email: [sealtaq@neoferma.com](mailto:sealtaq@neoferma.com)  
Phone: +61 (0)7 5576 4922  
[www.neoferma.com/sealtaq](http://www.neoferma.com/sealtaq)



The Baines Masonry Lockblock® is a lightweight (156kg per M2 Approx.) thin bed masonry system using a 2mm polyurethane adhesive in place of the traditional 10mm sand and cement mortar bed.

Lockblocks® can be used in loadbearing basement walls, retaining walls, lift shafts and can also be used in partition walls without the need to concrete and steel reinforce. Lockblocks® are an excellent choice for use in high-rise buildings due to their lightweight and the fact that no sand and cement needs to be lifted and mixed on site creating far less WH&S and site clean-up issues.

Lockblocks® have a componentry of three, a full stretcher, a half stretcher and a corner or end block, the corner block can be used either right hand or left hand, the adhesive is a fast setting polyurethane adhesive which can be laid on a wet block eliminating costly down time.

Lockblocks® were chosen by Narooma Self Storage to construct their new premises in Hotkins Pl Narooma; Mike Munmo, the owner and builder, sourced supply through Narooma Home Hardware. Over 10 thousand Lockblocks® were used in the construction and 80 cubic metres of core fill was placed in the blocks.

Mike Munmo was extremely happy with the outcome, stating that the cost was lower than any alternative method of construction, the speed of block laying was a least twice as fast as the traditional method, sighting that on one occasion two block layers and a labourer were able to lay in excess of 1900 blocks in a day. Mike was surprised how easily it was to core fill the blocks and achieve in excess of the required amount of concrete coverage around the reinforcing steel an important factor when constructing close to the eastern seaboard.

Narooma Home Hardware was so impressed with the Lockblocks® they have commenced construction of their new premises using Lockblocks®.

**LOCK BLOCKS**



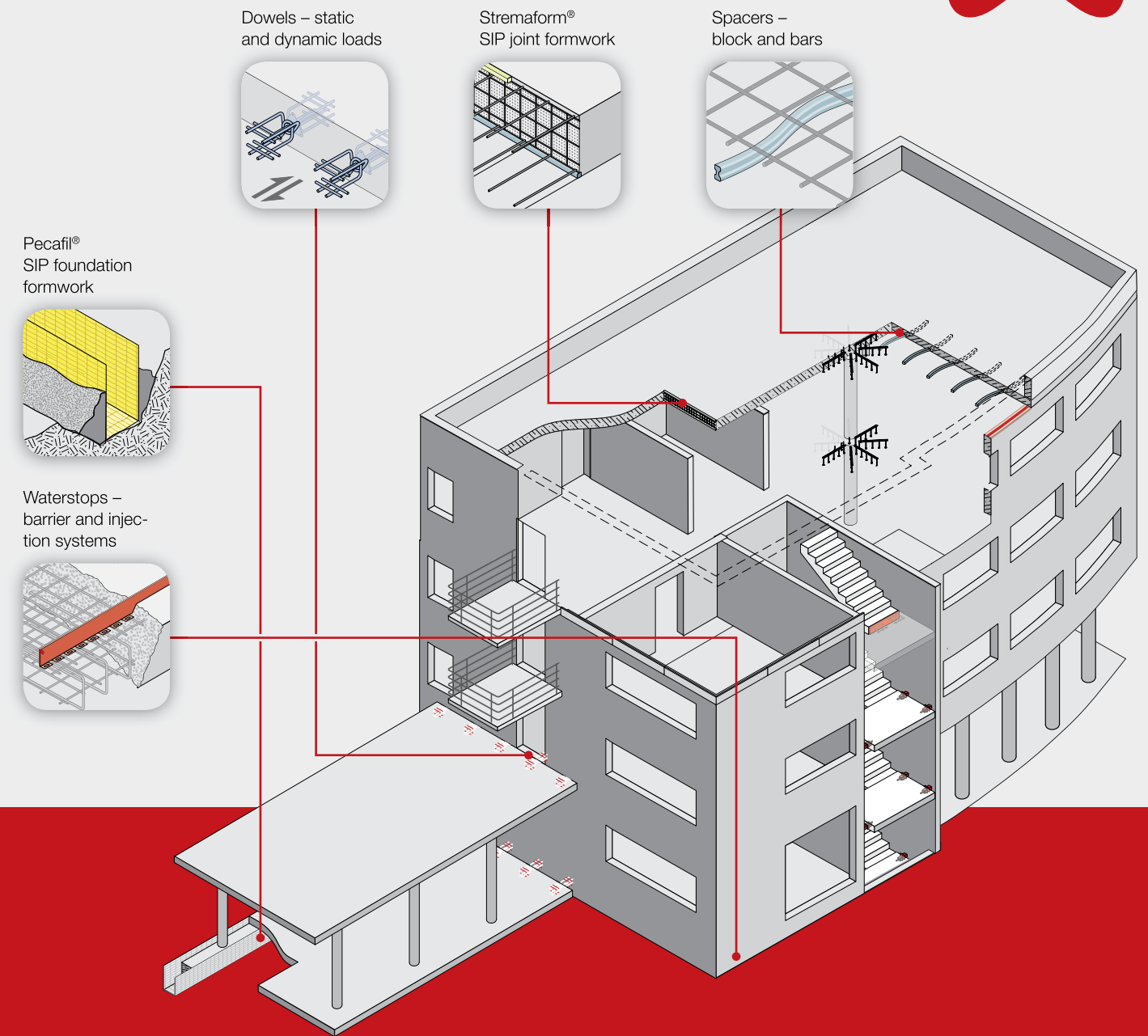
For more information contact Baines Masonry, 900 Wilton Road, Appin NSW 2560, phone 02 4631 1383, email [info@bainesmasonry.com.au](mailto:info@bainesmasonry.com.au), website [www.bainesmasonry.com.au](http://www.bainesmasonry.com.au)



Thousands of products are used in construction from the smallest component to large precast structures. As the industry continues to push the boundaries in function, form and design, these products continue to evolve to meet ever changing demands and regulations.



## TECHNOLOGIES FOR THE CONSTRUCTION INDUSTRY



## Find many more in our product range!

### Spacers

A range of quality durable spacers compliant with AS/NZS2425

### Formwork

A range of versatile Stay in Place (SIP) formwork

### Reinforcement

Connection systems for working and expansion joints

### Sealing

Waterstops (coated metal, pvc, injection hose, expanding and non-expanding) for all situations

### Building Acoustics

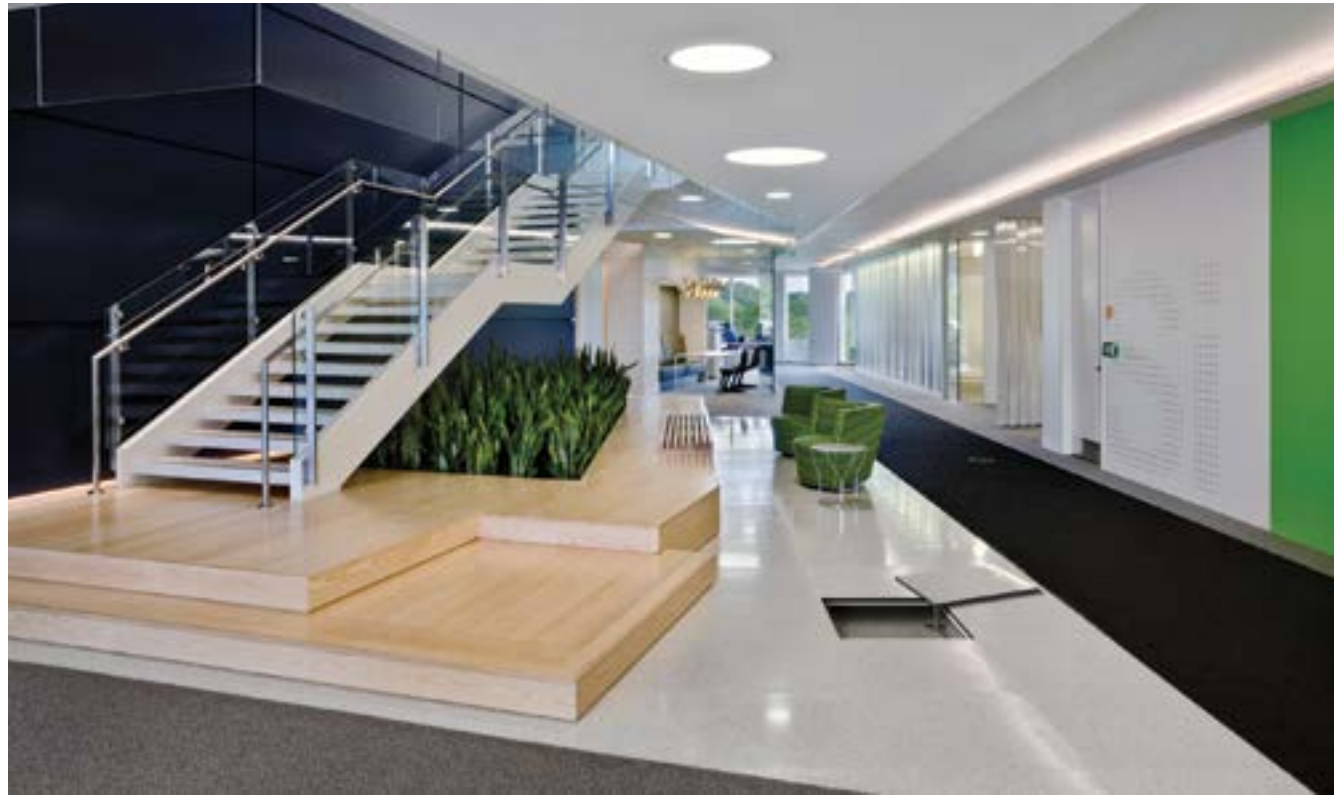
Dowels, spacers and bearing pads to reduce sound transmission

Max Frank Australia Pty. Ltd.

1/42 Balacava Street | Woolloongabba QLD 4102 | Australia | Phone: 1300 853 235 | E-mail: info@maxfrank.com.au

[www.maxfrank.com.au](http://www.maxfrank.com.au)





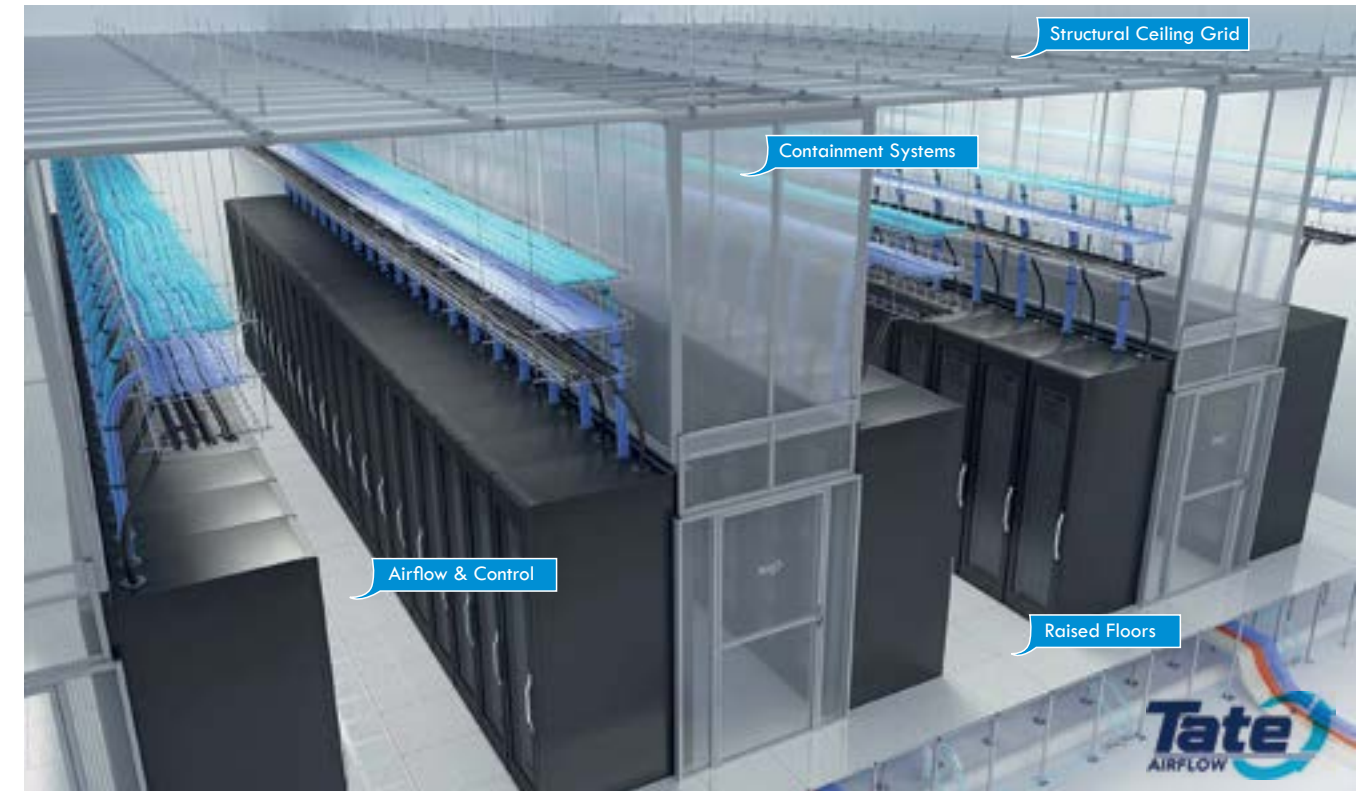
#### ACCESS FLOORS for general office environments.

Tate Access Floors, a Kingspan Group Company, formally known as Tasman Access Floors in Australia is a global provider of access floor solutions for the general office and data center environments. Our innovative products provide a structural, modular platform to efficiently manage building airflow, power and data services reticulation throughout the overall building lifespan, as well as flexibility in tenancy churn. Through form, function and finish, Tate can provide advice on integrated designs for access floors, underfloor air distribution strategy, services layout and modular finishes to support your building design into the future.

#### TATE SIGNITURES selected for Heritage Restoration

Central Station is the largest railway station and transport interchange in NSW and is of State significance for its historical value. With its grand sandstone edifices and approaches it is a well-known landmark in Sydney.

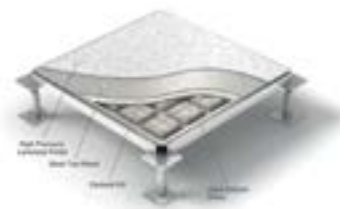
Tate was engaged to provide a signature flooring solution that supported the historic values of the Central Station Heritage Ticketing office. The Tate Signatures™ porcelain finish access floor system was selected to provide an architectural platform to allow services distribution in the underfloor plenum so as not to interrupt the grandeur of the heritage walls and ceilings which define the space. Tate is thankful to both NSW Public Works and Sydney Trains for being included in this prestigious project.



**Tate Offers** Raised Floors, Structural Ceiling Grid, Containment, Airflow Panels and Controls all out of the one factory, with one Project Manager, one invoice and one point of contact - ONE TRADE.

#### Raised Floors

The perfect data center environment requires the ability to handle a large number of data cables, the ability to efficiently handle high heat loads that are variable and diverse, and the ability to adapt for future technological and cooling advancements. Tate's system addresses all of these needs in a highly adaptable space that provides the ability to respond quickly and easily to client, organizational and technological changes – all while being cost-effective in both construction and operation. With Tate's raised flooring solutions, you'll be able to address all of the demands of a data center while meeting the everyday needs of its users in a secure and reliable environment.



#### Structural Ceiling Grid

Tate's Structural Ceiling Grid is the ideal solution for any data center application where large heavy items need to be suspended within a building. Replacing custom-built on-site structural support systems such as Unistrut, with Tate's Structural Ceiling Grid can offer many advantages. A structural data center ceiling allows you to pre-design and specify the support solution in advance and, best of all it's less expensive and faster to install.

#### Containment Systems

Containing an entire row of air improves capacity and energy efficiency by reducing bypass airflow. The separation of cold supply air from hot exhaust air is one of the most popular strategies in data center design. Tate's ContainAire® product line is easy to install and modify, our products offer valuable energy saving opportunities.



#### Airflow Panels

Tate has a full line of directional and standard airflow panels to cater to all your data center cooling needs. Our range of cost-effective and energy-efficient directional airflow panels offer compelling returns on investment and lower operating costs in both new build and retrofit applications.

#### Sensor & Controls

Tate's automatic and manual airflow controls ensure that the proper amount of airflow is supplied to the cabinet to cool the IT equipment. Tate's SmartAire® MZ damper monitors inlet air temperature to automatically balance the airflow to deliver the right amount of air to the equipment at the right time to maintain the proper inlet temperature. Real time rack level monitoring and control of airflow improves decision making and reduces operating cost.





# Soundproofing Tiles & Timber Floors



Acoustibond application



Soundproofing tiles and timber floors using a Green friendly solution to suppress noise transfer between floors of multilevel buildings.

Acoustibond and Acoustiflor are made from recycled rubber crumb and are water-based solutions to the soundproofing problem.

Acoustibond and Acoustiflor pass the soundproofing requirements of the BCA when used on 170mm+ slabs.

Acoustic tests conducted by Auckland University show that the improvement in acoustic performance (Delta rating) of **Acoustibond** is  $\Delta L_{w11dB}$ , and 4.5mm **Acoustiflor** and **Acoustibond**  $\Delta L_{w13dB}$ .

**Acoustibond** is a trowel applied ceramic tile adhesive and is a fast, inexpensive solution to soundproofing tiles and adhering them at the same time and is the most cost effective acoustic solution (\$13-14 per m<sup>2</sup>).

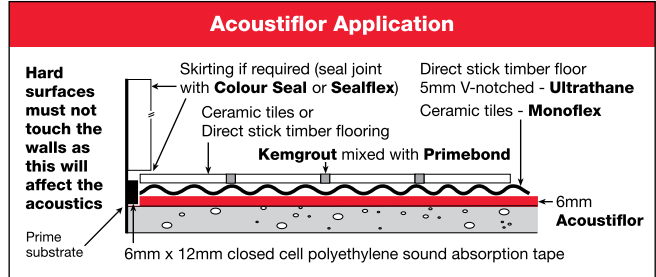
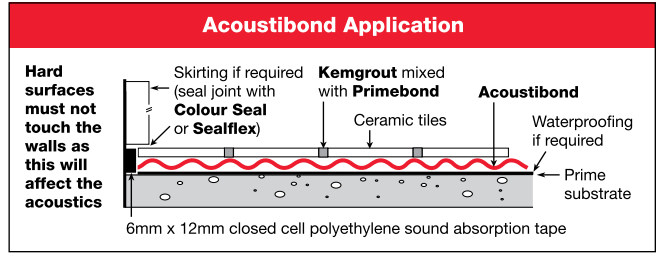
**Acoustiflor** is a flexible, levelling, acoustic compound so it levels the floor before adhering the tiles with a ceramic tile adhesive.

The acoustic system can be applied 3, 4, 6 or 9mm thick to achieve the desired acoustic rating and cost.

**Acoustiflor** and **Acoustibond** are applied faster than competitive systems and will save cost and time.

**Construction Chemicals** also manufacture a range of compatible waterproofing membranes, ceramic tile adhesives, grouts, levelling and repair compounds, and the products are available in Asia, all states of Australia and New Zealand.

Typical Impact Noise Test Results		
172mm concrete slab 100mm suspended ceiling 10mm plasterboard	Decibels (dB) L'nT,w	Noise Reduction
<b>Bare Floor</b>	69dB	Changes in sound level 3dB=Clearly noticeable 10dB=Half as loud
<b>3mm Acoustibond</b>	59dB	<b>10dB</b>
<b>6mm Acoustiflor, 3mm Monoflex</b>	57dB	<b>12dB</b>
<b>6mm Acoustiflor, 3mm Acoustibond</b>	55dB	<b>14dB</b>
<b>6mm Acoustiflor, 2mm Ultrathane</b>	55dB	<b>14dB</b>



At Portable Cooling Solutions Australia, the focus is on client comfort. As an Australia-wide distributor of the Port-a-cool range of evaporative cooling units, Portable Cooling Solutions ensures customers can achieve comfortable temperatures in even the toughest work environments. The company also offers after-sales service and support to make the ongoing maintenance of the products a breeze.

"I've always had an interest in finding solutions for people to provide cooling at a cheaper cost, especially outdoors," explains Faizal Gordon, Director, Portable Cooling Solutions. "I happened to be doing research on the internet and came across the product. I air-freighted it over to see how they work."

That was nine years ago. Today, Portable Cooling Solutions supplies all industries including commercial, industrial, mining, agriculture and military with cost-effective Port-a-cool products to keep workers, animals and machinery at safe temperatures. Whether it be spot or area cooling in a workshop, factory or on-site, Portable Cooling Solutions can provide the ideal product for any application. "With experience in the commercial air conditioning industry, we are able to give the best advice on the most appropriate unit so you get what you need," Faizal says.

Servicing a multitude of applications, Portable Cooling Solutions has cooled some extraordinary worksites. A recent hire project took Port-a-cool units below water level in bridge footings for Perth's Elizabeth Quay development, earning the commendation of Worksafe.

With heat stress a danger in confined and open worksites, the Port-a-cool range provides, as Faizal explains, a "cost-effective OH&S solution; you don't need to shut the site down if you can continue cooling the hot environment. And they provide ventilation – hot air out, cool in."

To further ensure clients meet OH&S requirements, Portable Cooling Solutions offer continued after-sales advice on cleaning and maintaining their units.

Always client-focused, Portable Cooling Solutions is currently exploring future growth. "We are looking at different areas where we can make a difference to our customers," Faizal says.

For more information contact Portable Cooling Solutions Australia, Unit 2, 26 Lancaster Road, Wangara WA 6065, phone 08 9408 0801, fax 08 9408 0802, email [info@portablecool.com.au](mailto:info@portablecool.com.au), website [www.portacoolaustralia.com.au](http://www.portacoolaustralia.com.au)



**Adelaide** (08) 8243 7888  
**Brisbane** (07) 3271 2944  
**Darwin** (08) 8947 1811  
**Melbourne** (03) 9761 4711  
**Perth** (08) 9356 9999  
**Sydney** (02) 9756 3533  
**Auckland** (09) 273 5444  
**Kuala Lumpur** (603) 5122 2522

[www.constructionchemicals.com.au](http://www.constructionchemicals.com.au)



NATIONALLY AVAILABLE STRUCTURAL

# ENGINEER CERTIFIED HOARDINGS

Safe, efficient, D.I.Y. public protection with  
zero fixing to plaster ceilings and or bulkheads.



TITAN, a patented **free standing system** provides a consistent  
Structural Engineer Certified outcome regardless of location.



✓ AS4687 Impact & Wind ✓ OHS - QA Documentation ✓ Re-defining standards ✓ Environmentally Responsible

## WARNING:

Traditional hoarding systems

**CONDEMNED  
NATIONALLY**

by Structural Engineers

Does your current hoarding method  
involve connecting to a plaster ceiling  
and/or plaster bulkhead for structural support?  
This method is dangerous & will **fail certification**  
by Structural Engineers, **fail insurance**  
requirements and **place the public at risk**  
should hoarding collapse and cause damage or injury.

## HIRE OPTIONS NATIONALLY



TITAN HOARDING SYSTEMS® -  
ENGINEER CERTIFIED  
PUBLIC PROTECTION™.

**TITAN**  
HOARDING  
SYSTEMS 

AS4687 Engineer Certified

For more information  
Call Nation Wide **1300 046 273** or visit **t-h-s.com.au**



## Innovative solutions for stunning architectural statements

Cedar Sales' unique range of architectural solutions delivers highly modern and innovative profile  
designs in the timeless beauty of Western Red Cedar and Hemlock. Add genuine quality and unmatched  
style to your projects with Cedar Sales' extensive range of cladding, panelling, screening and trims.

## Sustainable Style

COMMERCIAL | RESIDENTIAL | CUSTOM



Get in touch about your next project today

VISIT [cedarsales.com.au](http://cedarsales.com.au) PHONE 1800 156 455

**CEDARSALES**  
genuine solutions





# IRONASH



Australian Sustainable Hardwoods

## Tough choice? Not any more



Image supplied by Paarhammer



### Beautiful. Strong. Unique. Now new IronAsh from Australian Sustainable Hardwoods perfectly answers your exterior timber needs, too.

This is the biggest news to hit the Australian timber industry in years. Using innovative technology now you can specify Victorian Ash throughout a home and outside, too – seamlessly integrating the much-appreciated beauty of this gorgeous product inside and out – instead of having to specify dense, heavy species externally. It's all thanks to our unique TruCore treatment that gets deep into the core of the wood. We call this IronAsh. This is much more than a mere surface treatment.

IronAsh is transformed so dramatically that it now comes with a 25 year durability guarantee. You will harvest a huge time, cost and labour saving when you specify the most affordable Australian hardwood fit for external use, easily stained or painted, and durable to H3 classification. For your brochure, just speak to an IronAsh specialist on **03 5139 7001**. Or head to **[vicash.com.au/ironash](http://vicash.com.au/ironash)** and download the PDF.



**Brickworks Building Products, one of Australia's largest and most diverse building material manufacturers, is now proud to distribute the INEX>BOARDS range of products throughout Australia.** INEX>BOARDS provide a range of high performing, lighter weight materials for the construction industry. INEX>BOARDS offer a superior, yet price competitive, environmentally friendly alternative to fibre cement and plasterboard products.

Critically the products are both low carbon and high performing, whilst at the same time being affordable, delivering to the construction industry a better, safer and cost-effective solution.

Some of the key benefits of the INEX>BOARDS range include:

- **Low Carbon** - INEX>BOARDS minimise harm to the planet in their production which is undertaken at room temperature. The embodied energy of our board is about 40% to that of comparable fibre cement boards.
- **Strength** - INEX>BOARDS are manufactured to an equilibrium bending strength of 22MPa.
- **Fire Resistance** - Tests demonstrate that INEX>BOARDS are non-combustible, BAL-FZ and FRL 60/60/60 rated. Performance data available at [www.inexboards.com.au](http://www.inexboards.com.au).

- **Durability** - INEX>BOARDS can be used in all climatic conditions – rain, snow, frost, varying humidities and extreme temperatures.
- **Stability** - Tests demonstrate that INEX>BOARDS can retain over 80% of the dry strength after 25 soak-dry cycles.
- **Acoustic Resistance** - Tests demonstrate an acoustic attenuation of Rw5 higher than that of standard plasterboard products. At 10mm thickness INEX>BOARDS provide a similar attenuation as 13mm thick sound rated plasterboard.
- **Water Resistance** - INEX>BOARDS have a high level of water resistance and conform to the requirements of the Water Permeability Test.
- **Impact Resistance** - INEX>BOARDS offer high impact resistance – greater than that of traditional compressed fibre cement sheets or impact resistant plasterboards currently on the market.
- **Radiation Shielding** - Tests show enhanced electromagnetic radiation shielding properties.
- **Healthier Living** - INEX>BOARDS are non-toxic, provide enhanced breathability and inhibit mould.

*For more information or product literature for the entire INEX>BOARDS range of products, visit [www.inexboards.com.au](http://www.inexboards.com.au)*



## Have you been introduced to Norfolk Blinds?

Norfolk Blinds Pty Ltd was launched in 2003 as a custom manufacturer of quality blinds. The company has now established itself as a national supplier of blinds and curtains for commercial projects and has successfully completed some of the larger Australian window covering contracts. With offices in Sydney, Melbourne and Camdale, Norfolk Blinds is able to provide a high level of service to all areas of the country and has site teams in all states.

Being a manufacturer enables Norfolk Blinds to deliver sun control products quickly and with a high level of quality to meet any schedule. All products where possible use Australian manufactured mechanisms and fabric.

Norfolk Blinds have embraced modern times with the installation of up-to-the-minute computerised manufacturing equipment, high tech fabric ranges, automated systems and full LEAN aligned manufacturing facilities.

Norfolk Blinds supplies premium quality blinds, to your specification and to your schedule.

### Norfolk Blinds Commercial Collection

Norfolk Blinds are about to release our new Commercial Collection. Please email [sales@norfolkblinds.com.au](mailto:sales@norfolkblinds.com.au) to secure yours.

Norfolk Blinds, call our projects team on **1300 732 903**



## IS YOUR CAR PARK VENTILATION SYSTEM COSTING YOU TOO MUCH?

If you're running your exhaust fans 24 hours a day then YES it is!

With a AS1668.2-2002 compliant iQguard car park gas detection system you can run your exhaust system only when needed, reducing running costs and lowering your impact on the environment.



Integrated iQguard gas detection system for CO and NO2 monitoring



Variable speed drives run ventilation fans only when gas detection system indicates



Decreased energy usage, carbon footprint and power bills

Talk to an Austech gas detection specialist today on **(02) 9320 9600** so you can stop paying more than you have to.

[aus-tech.com.au](http://aus-tech.com.au)



As the leading force in Western Australia's height safety industry for more than 20 years, Safemaster is passionate about protecting people working at heights in the construction and other industries. With a reputation for its technical knowledge, rigorous standards and fresh approach, Safemaster continues to innovate and develop new techniques, products and ideas via its extensive research and development.

Safemaster's products are 100% Australian designed, engineered and manufactured in the company's own workshop based in Canning Vale WA, which is equipped with state-of-the-art technology, including advanced machinery and load-testing facilities.

All of its products are designed to be ergonomic, provide maximum protection at a competitive price and to suit most environments where safety is paramount. Additionally, Safemaster has a large inventory storage to cater to all its customers' needs, as well as a timely and cost-effective Australia wide distribution service.

Safemaster's complete range of fall protection products include X-ERT anchor point systems, FALLNOT guardrail systems, X-CLERATE static line systems and ZERO personal protective equipment. Its other products include SPACEGATE access hatch, SKYCLIMB modular ladders systems

and SKYCLIMB step ladders, stairs and platforms, as well as the PROLANE walkway systems and PROLANE SERIES work platform. All its products are robustly manufactured with a five-year warranty against defects, comply with Australian Standards and conform to Safemaster's commitment to safety, quality, service and performance. With work at height regulations, equipment and capabilities constantly evolving, Safemaster's wide-ranging experience, product development and testing ensures it keeps pace with industry changes and compliance to relevant standards and legislation.

Safemaster also provide specialised custom products in a wide range that are uniquely designed and manufactured to meet specific applications. This versatility also allows Safemaster and their innovative products to address the demands of modern architecture, heritage buildings and harsh industrial environmental conditions, providing safe access for their many clients who use Safemaster products when working at heights.

**Safemaster**  
SAFETY PRODUCTS PTY LTD

For more information contact Safemaster Safety Products, 98 Catalano Circuit, Canning Vale WA 6155, phone 08 6218 5158, fax 08 9456 5014, website [www.safemaster.net.au](http://www.safemaster.net.au)