

HOLBROOK BYPASS

The 9.5 km Holbrook Bypass will improve safety and convenience. It features a four-lane divided carriageway with a 110km/h speed limit, a full-diamond northern interchange & full-diamond southern interchange, two twin bridges, and landscaping and environmental controls.



Roads and Maritime Services (RMS) is building a dual carriageway bypass to the west of Holbrook to improve safety and transport efficiency.

The Australian Government is committed to upgrading the entire length of the Hume Highway to a four lane divided carriageway.

WHY IS A BYPASS NEEDED?

A bypass will improve safety and convenience for motorists and local residents by removing many cars and heavy vehicles from the streets of Holbrook. The bypass will also improve the efficiency of freight movements along the Hume Highway, the main transport corridor between Sydney and Melbourne.

THE PROJECT

The Holbrook bypass will be approximately 9.5 kilometres long. It will run from four kilometres north of Holbrook where it will deviate west from the existing dual carriageways to cross Wagga Wagga Road.

The bypass will cross the former Town Common area, passing to the west of the cemetery, sewerage treatment works and industrial area and then cross Culcairn Road. From Culcairn Road the bypass will cross Ten Mile Creek and rejoin the existing dual carriageway two kilometres south of Holbrook.

KEY FEATURES

- Four-lane divided carriageway with a 110km/h speed limit.
- A full-diamond northern interchange on Wagga Wagga Road with northbound and southbound on and off load ramps.
- A full-diamond southern interchange near the existing Hume Highway with southbound and northbound on and off load ramps.

- Twin bridges over Culcairn Road.
- Twin bridges over Ten Mile Creek.
- Landscape and urban design treatments to minimise visual impact and provide 'gateway' treatments to Holbrook.
- Environmental controls to minimise impacts on nearby waterways and natural areas.

BENEFITS

- Removing many heavy vehicles from residential and shopping areas of Holbrook.
- Improving pedestrian safety along the current Hume Highway route through Holbrook.
- Reducing traffic noise for residents and businesses, particularly at night.
- Travel time and fuel savings for vehicles moving between Sydney and Melbourne.

PROJECT STATUS

- An environmental assessment for the Holbrook bypass was publicly displayed from 11 November to 14 December 2009.
- Roads and Maritime Services considered community and agency submissions which can be found in the Holbrook bypass submissions report in the public information section of this website. The project was approved by the Minister for Planning in April 2010.
- Tenders were invited to build the bypass and a contract was awarded to Abigroup in March 2011.

For more information contact the Holbrook bypass team on 1800 224 202 (toll free) or, email: holbrook@abigroup.com.au, or write to: Holbrook Bypass project, PO Box 194, Holbrook NSW 2644

Below Beaumont Stabilising's involvement in the project was to paver place the select material zone, at an overall thickness of 300mm, in two layers of 150mm.

Below Supercut Concrete Services were selected to do the soft cutting and joint sealing for the Holbrook Bypass project.



Having been contracting to the road construction industry since 1986, Beaumont Stabilising were an obvious choice to work on the Holbrook Bypass project. Operating a fleet of eight, German-made, ABG road base paving machines, which distribute material in layers from 3.5 metres to 12 metres wide, Beaumont Stabilising are well known for their accurate level results and high standards of work. Also included in their fleet are two Volvo front-end loaders—ideal for loading the road-base material into the pavers when the use of trucks with dog trailers is impractical or uneconomical. Having worked within the civil contracting industry for 26 years, Beaumont Stabilising's experience focuses on major and arterial road upgrades, airport runways and road tunnels. They have been involved in many significant projects such as Nagambie Bypass (2012), Coal Connect 'Missing Link' Rail project (2011), Townsville Port Access Road (2011), Avalon Airport (2010) and Caboolture Bypass (2009).

Out of a team of twelve employees, four worked on the Holbrook Bypass. Beaumont Stabilising's involvement in the project was to paver place the select material zone, at an overall thickness of 300 mm, in two layers of 150 mm. By paver placing the material, rather than utilising the alternative grader placing method, it attained more accurate level tolerances and allowed for a more repeatable compaction process. Given that the specified level tolerances for the select material zone were +0 mm and -20 mm, the aim was to achieve an average of between 0 mm

and -5 mm, without the need for grader trimming. This allowed the successive concrete layers to be placed to the level tolerances required without having an overuse of concrete. To attain the required levels, Beaumont Stabilising utilised the Pavaset level control system—a method that has proved successful on many paving projects over 26 years. Along with this system and the expertise of the operators concerned, the required results were achieved.

Sourced from local quarries at Kyamba and Billabong, the material was mainly delivered to site via trucks with dog trailers, tipped approximately forty metres in front of the paver and then loaded into the paver hopper with a frontend loader. This allowed for a reasonably continuous paving operation with a target production of 2000 tonnes per day.

Other projects that Beaumont Stabilising are proud to have recently been involved in include: an overlay of the Bruce Highway, QLD; the airport development at Roy Hill iron ore mine, WA; Trackstar Alliance Centennial Highway Brisbane and Regional Rail Link Werribee."

For more information contact Beaumont Stabilising, phone (QLD) 07 5483 5597 or 0438435558, email: admin@beaumontstabilising.com.au, website: www.beaumontstabilising.com.au

One of the most significant companies within the NSW Core Drilling and Concrete Sawning industry, Supercut Concrete Services consists of 18 specialist operators, who can deliver exceptional results for jobs big and small.

Supercut has provided the construction industry with an impeccable professional concrete cutting service spanning the last 40 years, hence being selected to do the soft cutting and joint sealing for the Holbrook Bypass project. They are the NSW agent for Dow Corning 888 silicone sealant, of which they utilised on the project.

Specialising in projects such as the Holbrook Bypass, Supercut found the job to be fairly standard and straightforward, and they were not met with any challenges or obstacles, other than fitting in with the changing programmes.

Able to meet the needs of even the most difficult of projects, Supercut draw on their solid foundations of expertise and industry knowledge. A team of highly trained office staff utilise their broad knowledge of the construction industry when assisting clients and estimating projects.

Supercut Concrete Services can service any client's requirements using their extensive range of equipment which includes: diamond core drills; wall saws, both electric and diesel; diamond floor grinders, both electric

and diesel; road saws, either electric, LPG, petrol or diesel; hand held petrol power saws; hydraulic powered ring saws/hand saws; accredited dow corning joint sealing applicators; soft cut saws for major roadway projects; water tankers; safety grooving – road texturing machines; drum roll floor grinder/planer for large applications; and small and large water vacuums.

Supercut have the ability to cut to a depth of 800 mm with their hydraulic equipment, 625 mm with their road saws, and drill up to 1000 mm diameter core holes.

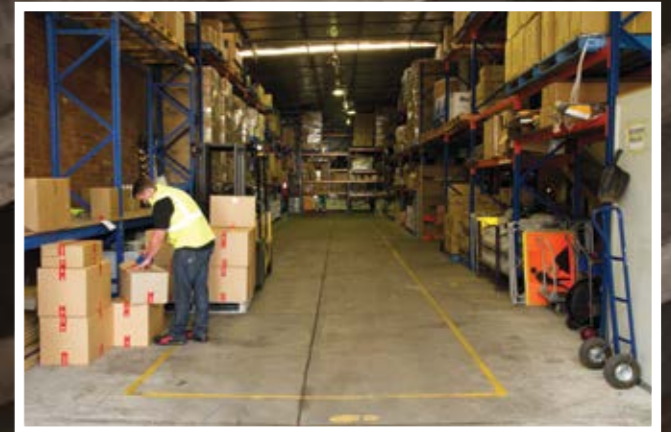
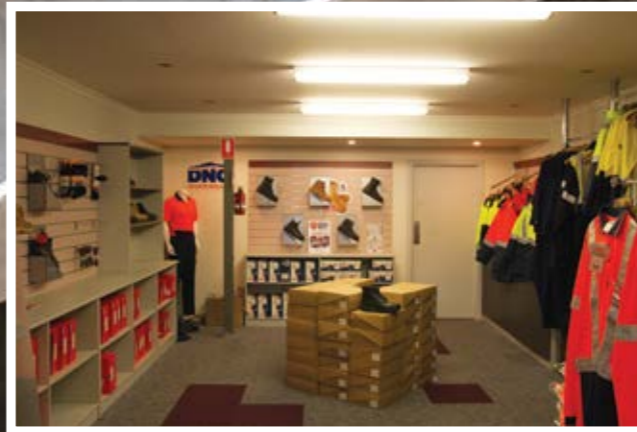
Other projects Supercut have assisted in include: Hunter Expressway; Bulahdelah Bypass; Kempsey Bypass; M2 Upgrade; Coolac Bypass; Southern Alliance; Albury Bypass; Sydney Airport; Gold Coast Marina; Maitland Bypass; Pacific Highway Coffs Harbour, North Kempsey and North Grafton; Parramatta M4 Cycleway; and Kuala Lumpur Airport.

With their commitment to upholding their complete and professional reputation, Supercut Concrete Services pride themselves on their ability to respond and solve even the most complex of jobs within the construction industry, 24 hours, 7 days service.

For more information contact Supercut Concrete Services P/L, 2B Bruncker Road, Greenacre NSW 2190, phone 02 9707 3088, fax 02 9796 3360, email: michael@supercut.com.au, website www.supercut.com.au

Below Continuous Mixers Australia provided the moisture conditioning of the crushed rock for the sub base and base pavement layers of the Holbrook Bypass.

Below Southland Supply Group's involvement in the Holbrook Bypass project consisted of supplying Abigroup, together with many of the major subcontractors on the project, with all their personal protective equipment and workwear.



Continuous Mixers Australia (CMA), a family owned and operated business, were selected to provide the moisture conditioning of the crushed rock for the sub base and base pavement layers of the Holbrook Bypass.

Specialising in soil and aggregate mixing and stabilisation, CMA's directors, and brothers, Adrian and Graham Castle combine a wealth of knowledge spanning 21 years, from the civil engineering and customer service industries.

Utilising their experience within the pavement and stabilisation industry, both within Australia and worldwide, CMA use the latest technology mobile pugmill units.

For the Holbrook Bypass redevelopment, CMA took advantage of the RapidMix 400C—a fully computerised pugmill that ensures all ingredients are metered accurately in order to meet design/mix proportions. All material can be mixed through the RapidMix 400C to the optimum moisture content and can then be loaded directly into trucks at a rate of 400 tonne an hour, to be sent to the designated work area for placement.

This efficiency minimises the expensive, time-consuming grader conditioning of materials. It also has the beneficial capability to print batch records product traceability for QA/QC records.

The job was slightly hindered by wet weather slowing down work, however, strategic planning of works with Abigroup ensured delays were kept to a minimum.

CMA are also working on a number of other significant projects such as the Fitzroy Flood Rehabilitation with BMD, Port Macquarie Airport Upgrade with EDI Works, Wiggins Island Rail Loop with Abigroup, Boolgeeda Airstrip with Rio Tinto, and Roy Hill Airstrip with Hancock Prospecting.

CMA can cater for material stabilisation and blending for the Civil Construction, Environmental and Quarry Industries, and offer a number of services including, but not limited to: road base water mixing and stabilisation for road, rail and airport construction; environmental and soil contamination rectification; select fill stabilisation; paste backfill for mining applications; benitinite blending for land fill applications; and roller compacted concrete for dam construction. They currently operate four pugmills throughout Australia, and their latest machine has the capabilities to weigh individual ingredients as well as produce RCC concrete.

For more information contact Continuous Mixers Australia, phone 0457 946 415, email: adrian@continuousmixers.com.au or graham@continuousmixers.com.au, website: www.continuousmixers.com.au

Southland Supply Group is a leading industrial consumables supplier, with branches in Wagga Wagga NSW and Canberra ACT, and associate offices in Sydney, Melbourne, Brisbane and Albany.

From their establishment in 1970, they have grown and evolved through diversification and acquisition, and have proven themselves as industry leaders.

Dedication to prompt, personalised service has become a hallmark of their success. With experienced consultants available to visit you at short notice, together with reliable and flexible supply and delivery arrangements, Southland has become the first choice supplier for many corporate companies nationwide.

Southland Supply Group's involvement in the Holbrook Bypass project consisted of supplying Abigroup, together with many of the major subcontractors on the project, with all their personal protective equipment and workwear.

Abigroup employees were supplied using the innovative Staff-Pack System, which breaks down bulk workwear and PPE orders into individually packed and supplied Staff-Packs—an excellent time saving and cost saving idea for customers.

Southland's 'Can Do' attitude and approach is at the core of their Business. The entire company, from the boardroom to the warehouse, is passionate about customers and their needs!

So, if you're looking for competitive pricing, guaranteed availability, express delivery and dedicated after-sales support in your next project, ensure you call Southland Supply Group!



For more information contact Southland Supply Group, 20 Nagle Street Wagga Wagga NSW 2650, phone 1800 77 22 91, website: www.southlandgroup.co