

WINDOWS AND DOORS PRODUCTS & MORE

MAJOR SPECIAL FEATURE



**SHARVAIN PROJECTS | DARLEY ALUMINIUM
LEDA ALUMINIUM | REMAX |
ORGADATA**

LogiKal

Software for the best windows,
doors and curtain walls.

For more information visit
our website at:

www.orgadata.com.au



INDUSTRY COMMENT



CLINTON SKEOCH
(EXECUTIVE DIRECTOR/CEO)
AUSTRALIAN GLASS
AND WINDOW ASSOCIATION
www.awa.org.au

WINDOW FLASHING CODE CHANGES

Those with long memories will recall a time when flashing was always used in the installation of doors and windows and how over time the use of flashing slowly disappeared.

Now a notable change to the National Construction Code (NCC) for 2019 has reinforced the need for builders to use flashing.

Previously versions of the NCC only required “adequate” flashing for windows and doors in timber and composite walls with no direction as to what might be adequate and it was silent on flashing for masonry walls (although masonry flashing requirements were in Australian Standards (AS) 3700 Masonry Structures and (AS) 4773.2 Masonry in Small Building construction).

NCC 2019 now includes flashing of both head and sill for masonry veneer to bring it

into line with the masonry standards, while timber and composite wall cladding now has specific flashing requirements (Clause 3.5.4.6) with correctly installed head, sill and jamb flashing now mandated.

There is an exception for head flashing when there is protection afforded by an eave or roof that extends horizontally out from the wall by at least three times the distance from the top of the window to the underside of the eave or roof. In that case the head flashing can be omitted.

The removal of the word “adequate” when it comes to flashing is welcomed by the window and door industry as it reinforces correct installation procedure in a way that is clear and not open to interpretation.

Instructional videos can be found at:
www.awa.org.au/resources/installation-video-series

LEADING LIGHT TO IMPRESSIVE TAILORED DESIGNS

Leda Aluminium is renowned for the proven performance, reliability and stylish design of their aluminium products.

They have been manufacturing and installing in retail, commercial and residential projects in the greater Sydney area for over 35 years.

Specialising in aluminium doors, windows, curtain walls, louvre systems and slump glass, Leda Aluminium has many outstanding projects to their credit. One of the latest to be completed is The Galleria at 23-29 Hassall Street, Parramatta, a residential development of 170 apartments spread over 20-floors, located in the heart of the CBD.

The Galleria is an award winning development. Builder Nucorp Constructions had very specific requirements relating to the windows to meet the architect's design. Special 300mm blade louvres were required for the project, so Leda Aluminium's research and development team worked alongside APL Louvres to fully design and fabricate the louvre system. The louvres are a feature of the building, making both a visual impact and providing functionality and practicality for residents, who can use the opening louvre system to improve ventilation and reduce dependence on air conditioning systems.

Apart from the distinctive louvres, the project needed a range of different doors and windows. The windows included sliding, awning and fixed styles with special coloured back glass and safety glass as required. Leda installed their unique commercial grade high performance sliding door, the LEDA CSD-100 series, which was designed by their research and development team. It has been fully tested and certified by NATA with the ability to withstand water penetration of 650Pa and has an ultimate strength of around 4,000Pa. The CSD-100 series is ideal for buildings of around 20-storeys, perfectly suiting the requirements at The Galleria.

Leda Aluminium has their facilities and skilled staff at their Lakemba factory to do their own powder coating to ensure a high quality durable finish meeting Australian standards and warranties. For The Galleria, the door and window frames were powder coated Dulux Eternity Silver Kinetic and the

exterior glass louvre frames were finished with Anodic Natural.

A project of this magnitude is well within the scope of Leda Aluminium and they utilised six experienced installation teams throughout, with one supervisor constantly available onsite, with a fully engaged project manager and project administrator. All components were manufactured at Leda Aluminium's technologically advanced factory at Greenacre in Western Sydney and delivered to site for installation. All production targets were met and the installation teams moved around the building to undertake fitting and testing of all windows and sliding doors as required.

The company has a well earned reputation for the consistent delivery of outstanding quality products. They have achieved this by working closely with their suppliers and clients to ensure that they meet construction timetables and budgets. Leda remains a family based business with many family members occupying key roles in the company. They also have a proud policy of supporting Australian suppliers and maintaining a friendly but professional approach in every aspect of their business. This philosophy combined with the renowned structural integrity and value for money of Leda's products has resulted in regular repeat contracts for the company.

Another marketing edge for Leda Aluminium is their accreditation and licencing from both Dulux and Interpon to enable them to do all their own powder coating inhouse. Architects and designers seeking special colours can be accommodated for both commercial and residential projects.

While Leda is focused on the greater Sydney region, they have expanded their footprint to include areas around Sydney including the Central Coast. The company undertakes work across all segments of the building industry including residential, apartment developments, commercial and retail.

For more information contact Leda Aluminium, Unit 2, 4 Naughton Street, Greenacre NSW 2190, phone 02 9642 8588, email admin@ledaaluminium.com.au, website www.ledaaluminium.com.au





CONCEPTION TO COMPLETION

Impressive glass façades and glazing add elegance and timeless style to any building. Sharvain Projects has built an outstanding reputation for the design, fabrication and installation of complex, glass façades and geometric glazing features.

Headquartered in Sydney, Sharvain Projects provides comprehensive design and construct solutions for specialised glazing and façade projects. They have a local design office supported by designers in Hong Kong, Shanghai and Guangdong in China. A wide range of their façade components for the international market are manufactured in their fabrication bases – also located in China.

Sharvain Projects has a highly skilled team with experience encompassing glazing, façades, metal cladding, structural and mechanical engineering. “We can draw on these resources to undertake and deliver every stage of challenging projects, from conception to completion,” said Managing Director, Boris Kostura.

An excellent example is their work on No. 1 Bligh Street Sydney, which comprises 30-storeys of curved glass, capped with an irregular shaped skylight and a main entry lobby with large span operable frameless glass louvres. Another is the Dr Chau Chak Wing Building

at the University of Technology, Sydney. Famous for its unusual shape, Sharvain Projects designed, manufactured and installed all the extremely curvy and irregular façade surfaces.

Sharvain uses the state-of-the-art 3D modelling systems for projects with irregular and complex geometries to guarantee the façade panels and elements are sized to fit the design surfaces, ensuring construction complies with thermal and structural movement requirements. “We interact very closely with our clients and their architects through all project phases to ensure delivery of the design concepts,” added Design Director, Shangyun Zhao.

Sharvain Projects has access to an experienced group of full time and part time contractors to ensure the installation stage meets project deadlines and quality standards. Current Sydney projects include the Opera Residences on Bennelong Point and Wynyard Place. Sharvain Projects is manufacturing the super complex façade and Crown Roof for the 52-storey Quay Quarter Tower.

For more information contact Sharvain Projects, Unit 7, 119-133 McEvoy Street, Alexandria NSW 2015, phone 02 9698 3411, email info@sharvainprojects.com, website www.sharvainprojects.com



REMAX DOORS: SMARTER, SAFER AND COMPACT

Remax is a highly successful Australian manufacturer providing durable, reliable, efficient and safe door and barrier solutions to a wide range of industries, which require the installation of large mechanised doors.

Remax doors are designed and manufactured to deliver a number of superior features compared to traditional industrial door products.

Managing Director, Damian Pederick said that the Remax Compact Sectional Door is one example of the company’s innovative product range. “The Compact Sectional Door has a folding mechanism which stacks slimline panels above the access. They take much less room within the door space and have no balance springs, reducing maintenance costs. Quieter and faster to operate, they are also insulated, assisting to maintain ambient temperatures in buildings, reducing energy bills.”

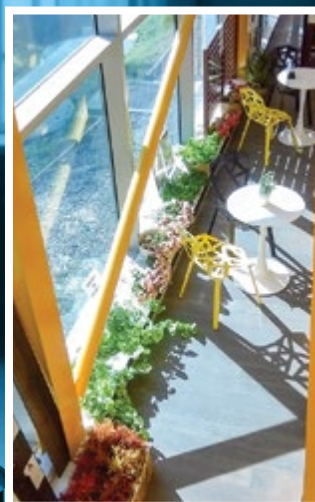
The Compact Sectional Doors are aesthetically appealing, with a contemporary appearance which can complement modern building design. Auto showrooms are an obvious market for the Remax Compact Sectional Doors and the company has installed these doors in many showrooms, particularly luxury vehicle dealerships.

The Land Rover and Jaguar dealership in Artarmon on Sydney’s North Shore recently installed the Remax Compact Sectional Doors, enhancing the aesthetics of the building design and providing a practical, safe and effective solution in the day to day operation of the business. The doors glass panelling allows natural light to flood the showrooms so that vehicles are presented to maximum advantage.

Remax works with clients and their builders from the earliest stages of the planning process and then provides a project management role to take the load off the builder, ensuring the installation of the doors fits the construction schedule and meets all deadlines.

“Our capable team can design, manufacture and install our Compact Sectional Doors to meet any industry requirement, delivering a product that is not only attractive but will have an exceptionally long operating life,” said Damian. The company installs their compact doors in a range of industry segments across Australia including auto showrooms, defence, food industry and schools.

For more information contact Remax, 5 Davidson O’Malley Court, Nathalia VIC 3638, phone 1800 010 221, email service@remaxproducts.com.au, website www.remaxproducts.com.au



YOUR SATISFACTION IS OUR BUSINESS

Darley Aluminium is a leading distributor of aluminium extrusion products and associated components that are used to manufacture window and door systems, largely for residential and commercial projects. For more than 22 years Darley has been designing and distributing window and door systems that offer superior performance and style.

A family owned and operated business, Darley's systems are designed in Australia and manufactured by one of the largest aluminium extrusion factories in China.

No matter how large or small the project, Darley can provide the complete solution. Their innovative window and door systems are designed to suit Australian climate conditions and exceed Australian testing standards.

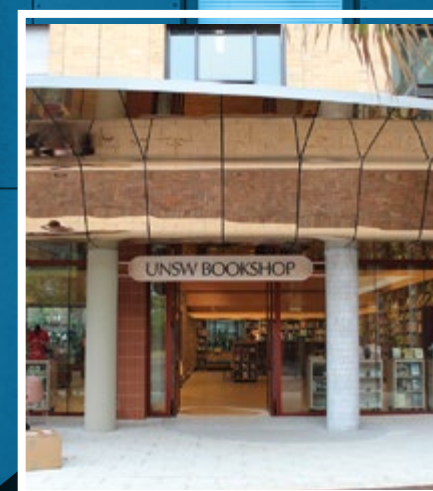
Darley are proud to announce that in early May they opened a new and improved showroom at their New South Wales head office. The showroom displays their new range of KlassicView (residential) and CityView (commercial) window and door product ranges, as well as their new ClimateGuard, thermally-broken windows and doors. A perfect environment for not only window and door fabricators,

but also end users to come and experience the window and door systems for themselves.

The new showroom also features a new accessories section with colour charts and hardware on display from suppliers including Dormakaba, Allegion and Austral. Darley's research and development, and customer service departments are on hand at the New South Wales office, if clients require any technical product information or need help to place an order.



For more information contact Darley Aluminium, 8 Tyrone Place, Erskine Park NSW 2759, phone 02 8887 2888, email sales@darleyaluminium.com.au, website www.darleyaluminium.com.au



PROUD TO BE RELIABLE AND METICULOUS

Modern Glazing Group specialise in the Design, Manufacture and Installation of aluminium doors and windows for commercial and large scale residential developments.

The "Modern Glazing Group" pride itself on providing innovative and cost effective solutions for clients' needs, taking the time to fully understand critical issues, requirements and expectations. The Modern Glazing Group is a company established by Sam Mehrkhavari and Frank Forouzandeh which has now become one of the most fast growing glazing contractors in New South Wales.

"At Modern Glazing we are capable of large scale production but at the same time we look into fabrication and installation of custom designed glazed façades. We provide a complete new glazing solution, a refurbishment or a stunning shopfront," explained Managing Director, Sam, who has 10 years experience in the glazing and façade industry. "We make quality aluminium framed windows and doors, internal glazed partitions, bi-folding and stacking doors and windows, Glazed walls and architectural features such as skylights, glazed roofs/awnings."

The Modern Glazing Group has put their focus on community related projects in recent years and majority of its works are in the education

and health sectors, Such as hospitals, clinics, aged care facilities as well as brand new and refurb public and private schools.

"We are always looking for new and innovative ways to deliver our products and services, utilising new technologies and industry experience to find the best solution for every project we undertake. We also work really hard to maintain long term relationships with our local suppliers and distributors, which is vital for the survival of this industry," said Sam.

"As a small company we are able to respond to client's needs immediately and always find the best and quickest solutions. We distinguish ourselves by receiving excellent feedback and customer satisfaction is very important to us. Our reputation is everything to us and this is the attitude all our members carry on their daily tasks" said Executive Director, Frank.

Modern Glazing Group are based in Bella Vista, New South Wales (head office) with manufacturing facility in Kings Park, New South Wales where majority of the fabrication and assembling are taking place.

For more information contact Modern Glazing Group, 307/14 Lexington Drive, Bella Vista NSW 2153, phone 02 8883 2504, email estimating@modernglazing.com, website www.modernglazing.com.au