

SPECIAL FEATURE

PERFECT

PRODUCTS

FOR MAJOR CONSTRUCTION PROJECTS

BUILDING PRODUCTS  
GUIDE

# SEARCHING FOR THE PERFECT PRODUCT?



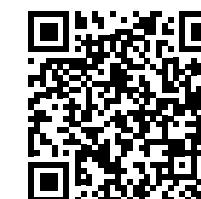
## SPEAK TO THE EXPERTS.

Our people are technical experts and solution focused individuals, driven to fully understand your needs and wants. They have in-depth product knowledge and sourcing experience. We stock over 45,000 assured products and offer industry services such as Inventory Management.

### If the perfect fastener does'nt exist, we can make it.

We employ Chartered Professional Engineers who have significant experience in the design and application of fasteners. So if you require a standard or non standard item, we've got you covered.

SCAN THE BELOW  
TO CONTACT YOUR  
NEAREST **BRANCH**



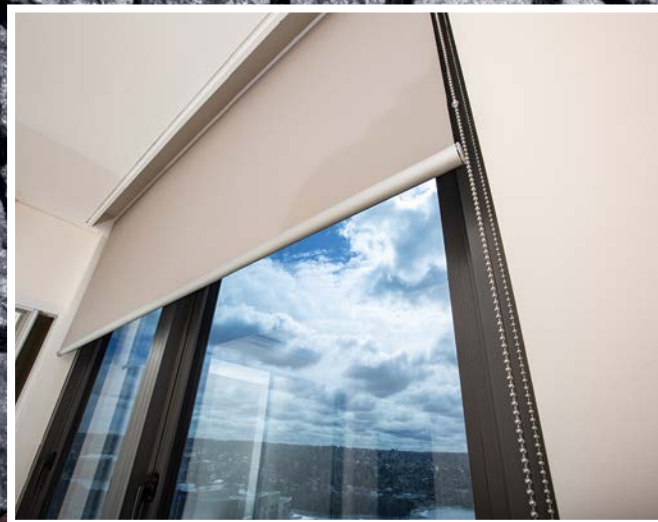
Keep it  
**TOGETHER.**

**UNITED**  
Fasteners

AUSTRALIA'S **LARGEST** INDEPENDENT DISTRIBUTOR OF FASTENERS & INDUSTRIAL SUPPLIES

FASTENERS & FIXINGS | ABRASIVES | CUTTING TOOLS | SEALANTS | ADHESIVES | LUBRICANTS  
HAND TOOLS | SAFETY | MATERIALS HANDLING | PETROCHEMICAL | SPECIAL MANUFACTURE





## ITS NO BULL – CHEAPER, BETTER, FASTER

Specialising in both automated and chain driven roller blinds, No Bull Blinds have the skills, expertise and experience for virtually any project. From blinds for your home through to installation of blinds throughout an entire apartment complex, No Bull Blinds provides versatility and adaptability for all of their projects, both small and large.

Providing local manufacturing, retail and installation of blinds in greater Sydney and Brisbane metropolitan areas, No Bull Blinds' pride themselves on their service and support, and the high quality of each and every blind they supply. Not only does the company provide a fast turn around time for the projects they work on, their ability to replace mismeasured or faulty blinds in days – not months, means a low risk of inconvenience.

To further ensure their blinds are consistently high in quality, No Bull Blinds have invested extensive time and money into research and development. All No Bull Blinds are cut using high tech, ultrasonic or crush cutting equipment. Stainless steel chains are offered to every client, and the company sources high quality fabrics for their blinds,

all of which are manufactured in Australia and custom made to size. No Bull Blinds also use a minimum of 38mm head rail.

From the company's administration, manufacturers, measurers and installers, every member of the No Bull Blinds' team are all employees of the company. No Bull Blinds does not outsource any of their work on projects to contractors.

No Bull Blinds' Managing Director, Ryan Rosenberg says there are a range of benefits to keeping projects inhouse. "Manufacturing and installation are all facilitated by No Bull Blinds employees in Australia. This provides many benefits to our customers including versatility, we can work to a variety of specifications and customer requirements, and are able to complete projects with very little notice. Additionally, we can handle large projects in full or provide packages that can be sold directly to the owner and installed after the building is complete."

"No Bull Blinds is also very experienced in what we do and have been providing blinds for large scale projects for more than five years. We are also very price competitive," said Ryan.

An example of No Bull Blinds' versatility is highlighted through the company's blind installation at the Iglu Brisbane project. Here the architect required bright coloured fabrics to be installed in particular locations of the building.

"We managed to source fabrics from France to fulfill the client's request," Ryan says. "Having the full process inhouse ensured we managed to install the different coloured blinds without one error in the colour option specified by the architect."

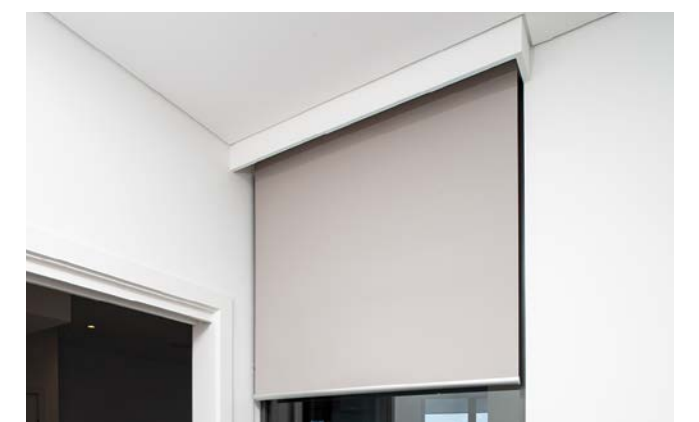
The Lawson Clinic in Gordon, New South Wales also demonstrates the ability of No Bull Blinds to easily adapt to client needs. The clinic required roller blinds with anti-ligature specifications to be installed throughout the clinic.

"This specification was amended a few weeks prior to installation," Ryan explains. "However, having every part of the process inhouse meant we were able to source a product from the United Kingdom, have the blinds manufactured to the new specification and still install the project without an amended timeline."

As well as smaller projects, No Bull Blinds continues to work on a range of large scale complexes, such as Billbergia Group's Wentworth Point Sirius development, which has been one of No Bull Blinds' biggest

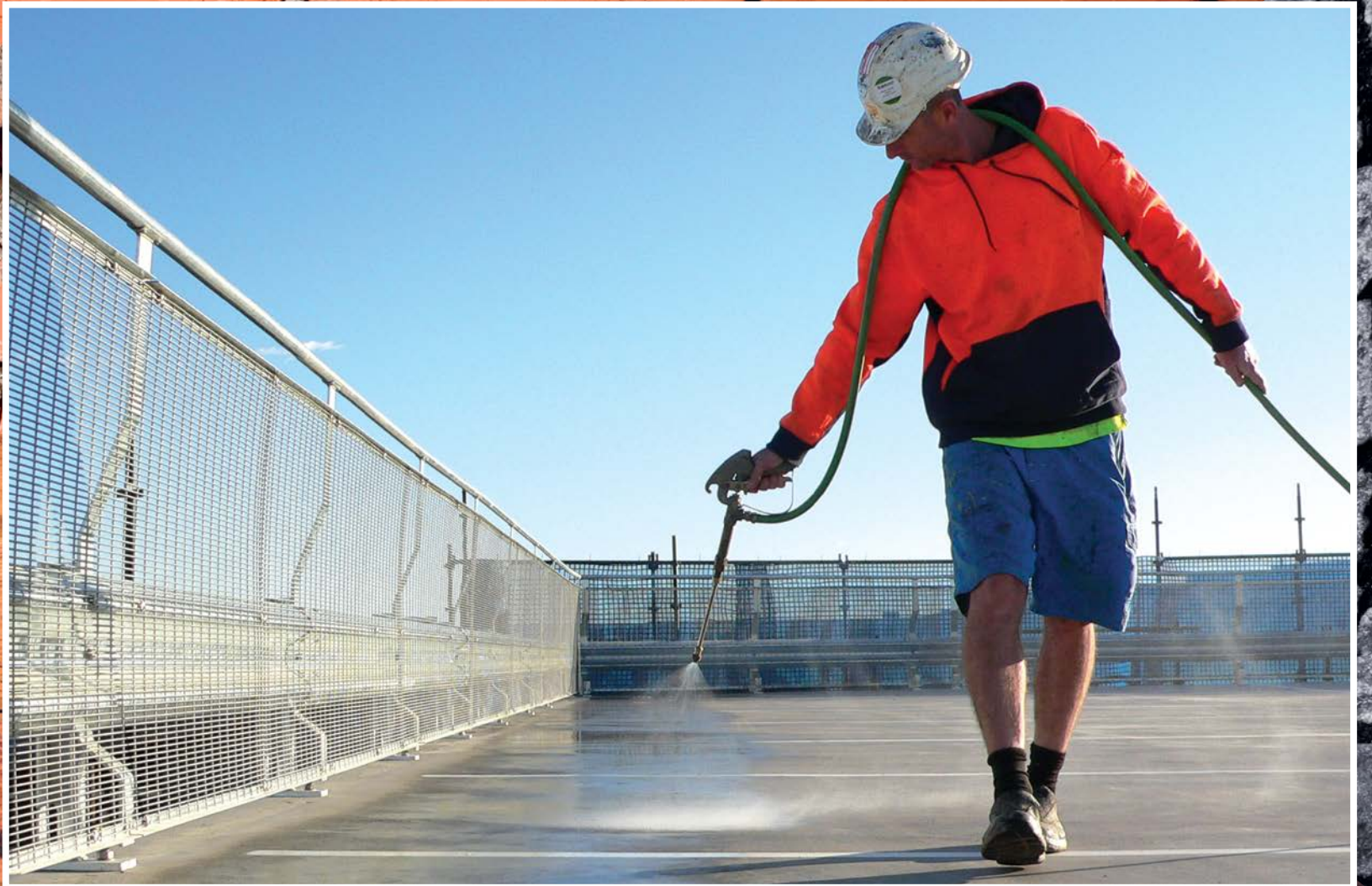
projects to date. Here the company completed blind installations across the complex's six building cores, which incorporated more than 700 one, two and three bedroom apartments.

No Bull Blinds is also currently working on the Billbergia Group's Marina Square 1 and 2.



**For more information contact No Bull Blinds Pty Ltd**, Unit 17A/1801 Botany Road, Banksmeadow NSW 2019, phone 1300 132 129, email [admin@nobullblinds.com.au](mailto:admin@nobullblinds.com.au), website [www.nobullblinds.com.au](http://www.nobullblinds.com.au)





## DEFLECT(A)ING BACTERIA

We are all aware of, have heard or read about the severe impacts of bacteria, such as E.coli, Golden Staph, Listeria and Salmonella, can have on our health. Environments particularly at risk of these bacteria include the health, construction, agriculture and food processing sectors.

What you may not know, however, is these bacteria also live underneath our feet on concrete areas that we walk on every day (including under floor coverings). This is where DEFLECTA® comes into play. A wholly-owned Australian company, Deflecta supplies specialist concrete protection products providing bacteria control, moisture control, sealers, mould, mildew and fungi suppression, and densifiers.

The company's high quality products can be found throughout Australia across a range of industries. This includes hospitals, aged care and child care, animal husbandry and agriculture, food processing/storage and manufacturing, cool rooms and freezers, car parks, stairwells, loading docks and ramps, schools and sports centres. Deflecta products can be used anywhere moisture and bacterial control is a critical concern, with the company offering specialised expertise to work with customers to develop specific solutions for specific problems.

DEFLECTA® has invested heavily in research and development, enabling it to produce a wide range of products manufactured in Australia for the local and overseas markets. This has resulted in a world first product, with technology developed in Australia, the company's signature product DEFLECTA ANTIMICROBIAL®. A concrete bacterial control product, that produces a sanitised environment on the concrete surface, concrete matrix and cementitious based materials together with an internal moisture suppressant.

Suitable for all concrete areas requiring bacterial protection, DEFLECTA ANTIMICROBIAL® is safe, non-toxic to humans and animals and environmentally friendly. When sprayed onto a clean concrete surface within minutes the biocide activates, killing bacteria and other pathogens.

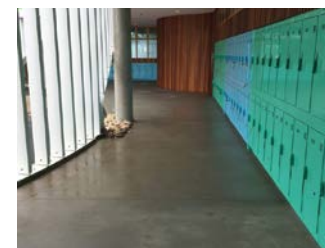
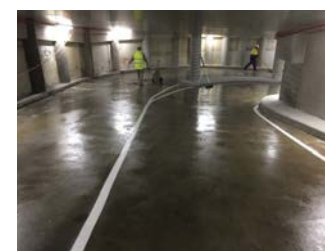
After 24 hours of application, the product kills 99.99% of bacteria such as E.coli, Golden Staph, Listeria and Salmonella. Active for over five years, DEFLECTA ANTIMICROBIAL® also provides internal moisture protection and is particularly beneficial in industries where bacteria on or within concrete is a major concern or threat, to areas such as hospitals, agriculture, aged and child care facilities, sporting facilities, food processing/manufacturing,

animal husbandry, equine facilities, water and sewerage sectors, and cattery and dog kennels.

In addition to DEFLECTA ANTIMICROBIAL®, DEFLECTA TOPEL® provides a hydrophobic surface sealer, which is a treatment that increases both the density and surface hardness of the concrete. The product increases wear and slip resistance of concrete in areas such as warehouses, car parks, stairs/landings, driveways, paving and ramps.

Similar to DEFLECTA ANTIMICROBIAL®, DEFLECTA TOPEL® is easy to spray or roll onto a concrete surface. The product is also safe, non-toxic and environmentally friendly. DEFLECTA TOPEL® prevents surface dusting, increases abrasion resistance and durability and helps maintain the appearance of a concrete slab overtime with wear.

Please contact DEFLECTA® via [www.deflecta.com.au](http://www.deflecta.com.au) or (03) 9318 9315 to discuss the full range of DEFLECTA® products to assist with concrete protection enquiries or for recommended advice if you have concerns with your concrete. DEFLECTA® has their products tested through independent laboratories throughout Australia, prior to delivering them to the market.



For more information contact Deflecta, 1/36 Radnor Drive, Deer Park VIC 3023, phone 03 9318 9315, fax 03 9318 0851, email [info@deflecta.com.au](mailto:info@deflecta.com.au), website [www.deflecta.com.au](http://www.deflecta.com.au)



# The science behind the design of Access Flooring



**ASP Access Floors** fosters a culture of innovation and forward thinking design. For two decades ASP's engineering, sales and marketing teams have worked together to create access floor products that lead the way in the raised floor industry. **ASP Access Floors** starts each product design process with a scientific approach of observation and experimentation, analysing each environment that will utilise the access floor systems, understanding their requirements, their issues, and their design objectives and applying these findings to the engineering of the product elements.

## The Environments

For each environment, understanding the basic needs of the space in conjunction with the design ambitions for that space is fundamental to the design of ASP Access Floors systems.

### COMMERCIAL OFFICES

In Commercial Offices ASP engage to understand the architects and designers vision for the building, the environmental objectives of the build, the head contractors key considerations and service consultants requirements. Access Floor Systems are designed with these objectives in mind.

With commercial towers building higher and striving to achieve better environmental credentials, it is imperative that **ASP Access Floors** are well educated in commercial industry news.

### DATA CENTRES AND COMMUNICATION ROOMS

As our world increasingly becomes more digitally connected, Data Centres are constantly leveraging new systems, methods and advanced technologies. It is of high importance to **ASP Access Floors** that the company is abreast the new solutions and concepts around data centre architecture and design.

**ASP Access Floors** data centre solutions focus on aiding the data centre to run more optimally which in turn create competitive advantages for them.

### CASINOS

Casino design is an intricate process that involves optimising floor plan, décor and atmospherics to encourage consumer gambling. Hidden to the eye of the patron though, are the design elements implemented to cater to the high level security and high load requirements that the casino needs.

**ASP Access Floors** specifically designs for Casino environments with proprietary features able to sustain the high live load casino requirements.

### ENTERTAINMENT VENUES

The access floor solution for each entertainment venue, building or precinct is unique, varied and will most likely be multi-faceted. **ASP Access Floors** understands that great entertainment design creates spaces that are flexible, adaptable to change, but ultimately create an extraordinary experience for the people who visit.

Designing access floor systems for these venues that allow the designers an adaptable and flexible solution to support their vision is **ASP Access Floors** primary focus.

### EDUCATION FACILITIES

Education facilities of today strive to achieve both design and environmental excellence in their architecture and interiors. **ASP Access Floors** engage to understand the architects and designers vision for the building, the environmental objectives of the build, the head contractor's key considerations and service consultant's requirements for each project.

Access floor systems are recommended as a result of this research an often address key design elements such as acoustics, load requirements, adaptability and flexibility of space.

**ASP Access Floors** scientific approach to the development of their range of access floor products, ensures solutions are tailored to each environment. This creates optimal functional solutions whilst allowing design flexibility for architects, designers, builders and consultants.

For more information contact:

**ASP Access Floors Pty Ltd**  
Global Head Office  
32 Prime Drive  
Seven Hills NSW 2147 Australia

**Tel:** +61 2 9620 9915  
**Fax:** +61 2 9620 9918  
**Email:** sales@aspfloors.com.au  
**Web:** www.aspfloors.com.au







# aggreko

## Need to hire power, cooling or heating for your next project?

We know the construction industry inside and out – giving you the right power, cooling, heating, and dehumidification equipment for the job the first time, every time. With our turn-key offerings, you can set it and forget it, and get back to the important work. Give us a call today to find out more.



GENERATORS & LOADBANKS



CHILLERS & AIR CONS



HEATERS & DEHUMIDIFIERS



AIR HANDLING UNITS



## SSANGKOM SINCE 1975

A global market leader in the manufacture and distribution of tile adhesives and construction material products since 1975, SSANGKOM are proud to launch their first products in Australia. This includes SSANGKOM's premium tile adhesives, such as DRYFIX I, DRYFIX I PA3000 and SSANGKOM TILE ADHESIVE.

Featuring excellent bond strength and flexibility, DRYFIX tile adhesives are polymer mortified. These adhesives are suitable for the interior or exterior of a building, swimming pools, floors or walls, large format tiles, and tile-on-tile applications.

As the most well-known and trusted construction material supplier in the Korean construction industry for more than 40 years, SSANGKOM is also proud of their track record in supplying products that are friendly to people and the environment.

According to SSANGKOM Director Jin Seo, the company offers an extensive range of environmentally-friendly products. "We are proud to supply environmentally friendly products which consider people and nature. Continuous improvement and innovation are hallmarks of SSANGKOM in Australia," says Jin.

SSANGKOM's eco-friendly and premium quality products include tile adhesives, waterproofing materials, primers, water repellents, epoxy, PVC floor adhesives, mortar additives, wood adhesives and plaster putty. "SSANGKOM has acquired the highest grade of the HB (Healthy Building Material) certificate as well as Low VOC (Volatile Organic Chemical) certification," Jin added.

In addition to ensuring it provides the highest quality products, SSANGKOM continues to undertake constant research and outstanding product development.

SSANGKOM's superior products are available to contractors, individual tilers and tile stores. SSANGKOM PRODUCTS will be available all over Australia in 2018. If you would like to become an authorised distributor/installer/supplier, please contact SSANGKOM for further information. Check out SSANGKOM on YouTube.



For more information contact SSANGKOM, 7 & 8/225A Brisbane Road, Biggera Waters QLD 4216, phone 07 5537 7979, email info@ssangkom.com.au, website www.ssangkom.com.au



# TAKE A CLOSER LOOK AT INNOVA™ DURACOM™

ARE YOU WORKING  
WITH FIBRE CEMENT  
ON YOUR NEXT  
PROJECT?

## Duracom™

Weather-resistant – simply shrugs off water damage. Rated for weatherability by CSIRO

Fully sealed, balanced panels won't rot, burn or corrode

Allows easy decoration in a range of design finishes

Rapid installation

Complies with BAL40 as required in AS3959:2009 – Construction of buildings in bushfire-prone areas

Builders Australia wide are discovering the benefits of the Innova™ range of façade and flooring systems because they have taken a closer look at their options. Ask yourself:

- Is it time and cost effective?
- Does it have the range you need?
- Does it have an innovative design?
- Is it the quality you need?
- Does it have a reliable Australian company behind it?

Duracom™, part of BGC's Innova™ range, gives you peace of mind for each and every one of these questions. The Duracom™ façade system is quick and simple to install which reduces time and costs onsite and is back up by the quality and company culture of an Australian owned business that you can rely on.

Duracom™ is ideal for creating exterior cladding systems in low-to-medium rise buildings.

With its smooth, flat surface and square-edge finish, and utilising BGC's trusted fibre cement-coated compressed sheeting, Duracom™ delivers a strikingly modern, durable finish.

Lightweight yet exceptionally resilient, Duracom™ façade system is perfect for expressed jointing and a variety of finishes – from painted to textured.



## PUT A LID ON IT

**Terra Firma Industries specialises in the development of innovative pit lid products and solutions.** Featuring lightweight, strong and durable pit lids, access covers and manhole covers, Terra Firma's range is designed to meet the requirements of any civil construction project.

By manufacturing pit lids from a variety of composite technologies, the company have effectively engineered manual handling risks out of lifting access covers, significantly reducing the risks of lifting injuries and unsafe lifting practices. Lightweight pit lids are also quicker and easier to install and inspect, saving time and significantly reducing installation and maintenance costs.

Three tunnel projects in Melbourne have recently utilised Terra Firma pit lids – the Burnley Tunnel heavy duty retrofit and the Parliament Station and Flinders Street Station C-Class retrofits. Terra Firma Managing Director, Ashley Reid, said that the specialised properties of the company's products were ideally suited to the specifications demanded by these projects. "In the case of the Burnley Tunnel, conventional iron access covers and frames had corroded in the highly aggressive environment. These were time consuming and difficult to remove, with the potential for dangerous hazards in trying to access

the pits. The solution was the installation of Terra Firma non-corrosive composite covers and frames."

At Parliament Station there was an additional need to ensure stringent fire and smoke regulations were met. Terra Firma developed their C-Class Fire Shield product specifically for the Melbourne Metro system. Fire Shield significantly exceeds NCC requirements. In addition, it provides easy access through its lightweight construction and is both durable and attractive. At Flinders Street Station, the very heavy existing concrete pit lids weighing as much as 250kg were replaced by Terra Firma lids weighing just 28kg, transforming the operation of opening and closing the covers. The Terra Firma access covers were tailored to fit directly into existing framework and eliminate the need for costly, dusty and disruptive platform modifications. Terra Firma was constantly working with clients to create tailored solutions for the unique challenges faced in tunnel environments and other situations requiring safe, strong, fire-resistant and customised pit lids.

*For more information contact Terra Firma Industries, 139 Somerset Road ,Campbellfield VIC 3061, phone 03 9357 1230, fax 03 9357 1231, email [info@tfpl.com.au](mailto:info@tfpl.com.au), website [www.terrafirmapitlids.com.au](http://www.terrafirmapitlids.com.au)*

phone 03 9392 9444 | fax 03 9392 9404  
[www.bgcinnovadesign.com.au](http://www.bgcinnovadesign.com.au)



# Zero Threshold Drainage

Seamless continuity between indoor and outdoor areas.



ARCHITECTURAL  
GRATES + DRAINS



Designed to eliminate the 'trip-and-slip' hazards of stepdown partitions, Stormtech's threshold drain delivers uninterrupted access between indoor and outdoor living areas and is access and mobility compliant according to AS1428.

## SMART BY DESIGN

The low-profile design features a linear stainless steel drainage system with a concealed channel section for door tracks and thresholds. The external linear grate sits flush beside the doortrack, in precise alignment with the ground surface. An integrated, concealed, subsill collects water flows and condensation around the doorway, conveying it to the external drainage system.

The Threshold drain integrates elegantly into sliding door tracks, bi-folds or hinged doors, is compatible with major door manufacturers and available in 5 different styles of grate designs, including the Marc Newson tessellated pattern.

## QUALITY BY DESIGN

As one of Australia's most respected drainage manufacturers and suppliers, Stormtech is committed to delivering the highest quality drainage solutions for today's unique building projects.

Stormtech's skilled specialists work closely with specifiers, architects and builders to offer tailored drainage solutions, including bespoke drawings

"Stormtech Threshold drains integrate seamlessly into sliding door tracks, bi-folds or hinged doors."

Stormtech is compatible with all major door manufacturers and is available in 5 unique grate designs.

and plans for customised drainage designs for all Australian environments.

Stormtech works proactively with plumbing advisory services to ensure drainage is not only fit for purpose, but meets stringent Building Code of Australia (BCA) compliance measures.

Visit [stormtech.com.au](http://stormtech.com.au) for tools + inspiration  
Telephone 1300 653 403



## CSR GYPROCK SUPPORTS OPTUS STADIUM

CSR Gyprock's reputation for innovation and technical leadership, as well as proven success in delivering nationally recognised landmark projects meant they were the perfect fit as the major plasterboard supplier for Perth's recently completed Optus Stadium project. Overall, 200,000m<sup>2</sup> of plasterboard was supplied to site during 36 months of construction.

The Gyptone and Rigitone Perforated Plasterboard ranges were chosen for the many dining, conference and private entertainment areas. With their acoustic fabric lining and unique panel perforations, they provide a visually appealing solution with acoustic excellence.

An added benefit of these ranges of plasterboard is Activ'Air, an innovative, patented technology that converts formaldehyde into non-harmful inert compounds that are permanently locked into the board and cannot be released back into the environment. The result is enduring, cleaner air.

Gyprock EC08 Complete was used in the corridors, lounges, general admission areas and food outlets due to its superior performance in resisting mould, moisture, impact and fire as well as its acoustic performance capabilities.

CSR Gyprock partnered with Cubic Interiors WA to guide product specification and provide technical support onsite.

"The Optus Stadium project was Cubic's first landmark engagement with CSR Gyprock WA and we were impressed with Gyprock's proactive approach – this assisted with a successful handover several weeks ahead of schedule. This was made possible with Gyprock's fabrication being local and close to the project. I believe this will be the first of many more projects that Cubic and Gyprock will complete," said Adam Monson, State Manager, Cubic Group.



For more information contact CSR Gyprock, phone 1300 306 556, website [Gyprock.com.au/OptusStadium](http://Gyprock.com.au/OptusStadium)