

FAÇADES CLADDING CURTAIN WALLS

SPECIAL FEATURE

AMA Windows + Glass Facades | Custom Clad
Architectural Glass & Cladding | Fabmetal Specialists
Frontek Australia | JRL Aluminium | Keystone Victoria
Leda Aluminium | Preston Australia | RJS Aluminium
Pearl Facades | Tomark Group | Nawkaw
Trinity Window Solutions | Facade Concept Pty Ltd



FAÇADEFIRST

NEW CONSTRUCTION METHODOLOGY
FOR ANY BUILDING AND CARPARK
INNOVATIVE | SAFETY | PRODUCTIVITY



WHAT'S NEXT

The game is changing. FAÇADEFIRST Methodology is a real game changer. Preston is the first movers to see the advantages of such a radical idea and innovation. Preston game changer is **FAÇADEFIRST, THEN FLOORS-SIMPLE.**

THE CONSTRUCTION METHODOLOGY IS THE SAME FOR ALL BUILDINGS. FAÇADEFIRST IS THE **PROTECTIVE SAFETY COCOON**, FALL PREVENTION AND REMAINS ON THE BUILDING AS THE **PERMANENT FAÇADE** OF THE BUILDING.

Preston Australia Pty Ltd
196 Silverwater Rd
Silverwater NSW 2128
T: +61 02 9748 4677
E: info@prestonaustralia.com

VISIT OUR WEBSITE

WWW.PRESTONAUSTRALIA.COM



SUPERACCESS
ALL ERECTED IN ONE (1) DAY



CERAMIC CLADDING THE FUTURE OF BUILDING FINISHES

The Australian construction industry has a new and exciting source of innovative cladding products delivering sophisticated and competitive building solutions. Frontek Australia Pty Ltd, part of the international Spanish group Greco Gres Internacional, is now offering extruded ceramic cladding panels in vitrified porcelain quality with excellent technical and aesthetic properties to the local market.

Sales Director of Frontek Australia, Bernat Minana, said that the Frontek porcelain products were extremely hard, highly weather resistant and long lasting, even in the most demanding environmental conditions.

“One of the great features of our ceramic cladding is that it is totally maintenance free. Unlike timber or stone cladding, Frontek ceramic panels do not require repainting or resealing at regular intervals, nor does it scratch as aluminium cladding can do.”

Another unique feature of Frontek ceramic panels is that they are mechanically fixed with brackets and rails, not wet fixed or glued. This makes them easy to install in challenging situations such as inclined surfaces and soffits.

Frontek has developed highly efficient installation systems to cover all building environments. One outstanding advantage is the ability to assemble modular units off site at a curtain wall factory, then transport to the building site and crane the units into position, providing economies of scale and production efficiencies.

Frontek’s ventilated façade systems guarantee improved thermal insulation as they allow the installation of a continuous coating between the outer support of the bearing wall and the façade cladding.

The insulating material applied on the exterior face of the wall and floors eliminates thermal bridges. This prevents heat loss to the outside of the building in the coldest months of the year and avoids heat transfer from outside in summer. The estimated energy saving is between 15% and 35% in both heating and cooling.

Additionally, the ceramic cladding provides acoustic advantages by reducing outside noise between 10% and 20%. “The proof of the effectiveness of Frontek’s products and their versatility in any environmental conditions is the fact they have been installed in climates ranging from Russia with its freezing winters to the +50°C temperatures of Dubai in summer,” Bernat said.

Architects are also attracted to Frontek’s products because they can be manufactured in a complete range of colours and have a high level of finish. Frontek offers a variety of pieces in different sizes, textures and colours that can be combined in different ways to give each façade a unique and original design. Added to that, the product is non-combustible.

The aesthetic qualities and versatility of Frontek products can be seen in projects like 477 Collins Street, Melbourne and the Miranda Dental Hospital. Internationally,

recent major projects include the Seoul Seo Han building in South Korea, Marriott Bloom Abu Dhabi in UAE and in Madrid, the Carril del Conde.

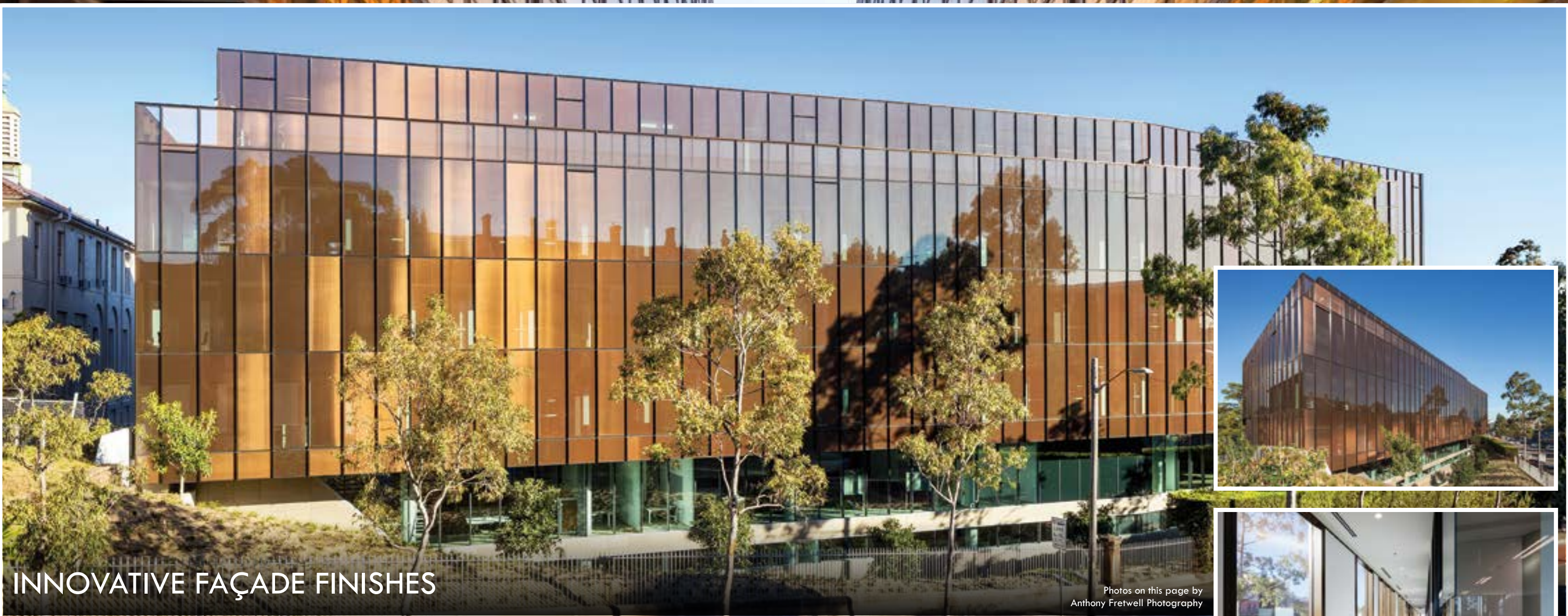
Frontek Australia has been in operation for three years. Their parent company Greco Gres Internacional is established in 153 countries and has a longstanding ceramic tradition dating back to 1940. The experience gained over decades in the manufacturing of high tech ceramic products has positioned the company internationally as a benchmark of quality in the manufacturing of extruded porcelain tiles and ventilated façade systems composed of unique extruded pieces.

Importantly, Frontek’s ceramic cladding is highly competitive in what is already a very competitive market. “When all the unique features and advantages of the Frontek product are weighed against all competitors, the benefits are clear,” Bernat said. “Frontek always emerges from any comparison as very competitive.”

Bernat is focused on spreading the word about Frontek’s qualities and advantages, particularly amongst the architectural community. “We aim to make Frontek a highly recognisable and trusted brand in the building industry right across Australia.”

For more information contact Frontek Australia Pty Ltd, Suite 1.03A, 1753 Botany Road, Banksmeadow NSW 2019, phone 02 9316 6818, email info@frontek.com.au, website www.frontek.com.au





INNOVATIVE FAÇADE FINISHES

Photos on this page by
Anthony Fretwell Photography

Architectural Glass & Cladding (AG&C) is a supplier of stylish, boutique, eco-efficient façade solutions which achieve that perfect balance of form and function on every aspect of a building's façade.

"With our wealth of knowledge and experience in the glass and façade industries, our team partners with architects, designers and façade consultants throughout the Asia-Pacific region, to tailor a solution for your needs, working in a true partnership with you from concept to completion," said Brad Woods, AG&C Executive Director.

"We provide the highest quality glass and cladding products from around the globe. We select our innovative product range from international suppliers who meet our stringent quality and service standards."

Strong relationships with their supplier group along with extensive experience in both project management and international logistics means the AG&C team diligently oversee every aspect of a project ensuring delivery of goods from door-to-door, stress free. AG&C is renowned for providing unique, tailored solutions to meet design aspirations within budget and project specifications.

Their portfolio of boutique façade products delivers both aesthetically and technically, with a range of options that offer sustainability, noise insulation, daylight and sunshade control, as well as thermal and solar properties, also combining significant energy savings.

Working closely with FDC Construction & Fitout, Hi Tec Windows and Architectus, AG&C provided the unique bronzed SEFAR Façade for The University of Sydney's Faculty of Arts and Social Sciences (FASS). This project was the first large scale curtain wall project in Australia to utilise SEFAR fabric.

The 4,642m² of glazed curtain walls with SEFAR fabric interlayer takes on a shallow V-shape as it contrasts against the 122 year old Heydon-Laurence building and 101 year old R.D. Watt building.

"SEFAR creates a dynamic backdrop to the campus' historic buildings," explained FDC's Design Manager, Marco Salvati. "SEFAR is a new product and had not been applied at this scale in Australia. FDC identified this as a challenge during the tender period. Utilising our expertise in façade and curtain wall systems, we were able to formulate a quality system to help streamline the procurement, manufacturing and delivery process. The SEFAR was combined with a Triple Low

E-glass in an IGU build-up to provide optimum performance and meet stringent façade requirements."

Unlike any other façade material, SEFAR is a non-homogenous product. It has unique characteristics providing a 3D façade as it changes colours in the sunlight.

"Delivery was a combination of many processes both in manufacturing and logistics," Brad added. "It was our long standing relationships with our partners GnT Glass and SEFAR, along with valuable input from FDC Constructions & Fitout and Hi Tec Windows that brought this project together."

Graham Dummett from Hi Tec Windows (the façade contractor) agreed it was an amazing team effort. "The goals we've all achieved have outweighed the earlier challenges. We've paved the way for the future Australian projects."

The 6-level FASS building design encompasses sustainable material selections, optimum solar orientation, daylight harvesting, potential for solar energy capture, potential for water harvesting for grey-water recycling and optimum acoustic orientation. Financially, the building



is efficient and cost effective, delivering value for money, with low maintenance costs.

Other buildings utilising AG&C's portfolio of products include Monash University Learning and Teaching Building, The Peter Doherty Institute at University of Melbourne, The Melbourne Conservatory of Music, Hong Kong Art Museum, The Shard Entry Eastlands Shopping Centre Ringwood and more.

Together, AG&C are building a more innovative, energy efficient Australia.

For more information contact Architectural Glass & Cladding, Level 1, 75-77 Wharf Street, Tweed Heads NSW 2485, phone 07 5523 2335, email admin@agcproducts.com.au, website www.agcproducts.com.au

COST EFFECTIVE DESIGN AND FUNCTIONALITY

If you're looking for something different, then look to JRL Aluminium (JRL). For over 15 years JRL have been manufacturing and supplying top quality, aluminium glazed windows, doors, louvres, shopfronts, awnings, façades and much more to both residential and commercial clients throughout the Sydney metropolitan area.

All JRL products are manufactured to precise specifications in their modern factory and installed by fully trained tradespeople. "We oversee the entire process. Nothing is left to chance, ensuring complete customer satisfaction," said JRL Director, George Charestan.

For the past 15 years, George has overseen all JRL large commercial window and door installations. He and the team proudly provide cost effective solutions for the creation of beautiful, but functional architectural buildings without the exorbitant costs.

The team recently applied their creativity to the Atmosphere towers in Castle Hill. Unique in design, Atmosphere at Castle Hill offers high quality, precision built apartments and retail areas surrounded by subtle and spacious green and communal areas.

"This is what JRL are renowned for," continued George. "For the two Atmosphere towers in Castle Hill, we worked with the architects, engineers and Toplace Construction, the builders to design and create solutions for the window walled façade, plus glass roof covered walkway between the two towers and the glass

enclosed escalators to the podium shops." Although the towers appear to have curved walls they are designed and created by the JRL team with an aluminium stick framed wall that provide lateral resistance while allowing thermal movement as it curves to up to six degrees in or outwardly as required.

"Because the glazed curtain wall can be installed in any size and design, you can create unique and visually stunning exteriors. All without having to sacrifice cost or efficiency. The JRL curtain wall system allows for an extensive variety of designs to suit performance, operational, aesthetic and glazing requirements. Glazing options can be either inside, outside, or structurally. You can also choose between a variety of face covers to have maximum control over the aesthetics of the building," added George.

Another project that the JRL team worked on recently is Latitude, a 162 residential apartment building with six retail outlets for Aland Developments in Liverpool.

"JRL supplied all the windows and sliding glass doors at Latitude," said George. "And although the building design has a fabulous 'V' effect from Level 10-22, it has been created by the architectural concrete structure. All our glazing is standard to suit the builders budget, but the result is remarkably stunning."

A curtain wall is usually an outer non-structural lightweight covering on a building that adds design and sometimes

weather protection. "At JRL we're producing and installing glazed curtain walls that are not actual curtain walls, but are structural walls created with the windows and doors," George explained. "Our creative and clever designs are both functional, effective and reduce construction costs."

The versatility of the JRL curtain wall system also means it can be installed in small or large units, depending on the needs and preference for the project – from floor to ceiling or across multiple levels, allowing for greater flexibility in design.

JRL also take into consideration the design requirements such as thermal expansion and contraction; building structure sway and movement; water diversion; and thermal efficiency for cost effective heating, cooling and lighting in the building.

JRL products are suitable for high rise residential and commercial buildings, hotel developments, institutions and industrial complexes. JRL's aluminium windows, doors and external façades are found on many of Australia's landmark buildings including the prestigious Platinum Towers, at Victoria Park, Zetland for Dasco, and the award-winning Alara Apartments building with operable louvre curtain wall for Eastern Pacific in Liverpool.

For more information contact JRL Aluminium, 48 Alfred Road, Chipping Norton NSW 2170, phone 02 9728 9402, email info@jrlnsw.com.au, website www.jrlaluminium.com.au



ALL THE COLOURS OF THE FAÇADE

Nawkaw is a unique colouring system technology that can change any type of concrete, cladding and masonry to virtually any colour imaginable for both domestic and commercial properties.

The Nawkaw colour system penetrates porous concrete, cladding and masonry walling surfaces and will not crack or peel like paint. The product is UV resistant and withstands rain and extreme temperatures, which gives it long lasting results backed by a 25 year warrantee.

The Nawkaw colour system is applied to the surface by a trained applicator, which permeates the concrete, cladding or masonry, integrating into its structure. The result is a smooth, even finish that complements the surface textures for a spectacular, yet natural look. This allows cost effective simulation of high end architectural finishes with visually stunning results.

Nawkaw pride themselves on their ability to collaborate with architects and building professionals to hit aesthetic targets in a buildable way on exterior walling. They further protect those aesthetics by applying self cleaning and eco-friendly invisible ecotio_2 photocatalyst coatings to the surface that is finished, which enables self cleaning and pollution reduction by actively purifying the air.

The Nawkaw system is also non-combustible, non-flammable, low VOC and requires minimal to no maintenance.

The range of Nawkaw finishes include opaque solid colours, weathered metallics and oxides, translucent and vivid colours, as well as realistic finishes of concrete masonry, timber cladding, and bricks and mortar. Furthermore the Nawkaw system can be used for colour matching and restoration.

“One of the beneficial applications of Nawkaw is its ability to provide long life guaranteed surface colour finishes to solve construction mishaps, batch variation, disguise repairs seamlessly and also to provide the prowess of a chameleon on a variety of substrates for architectural finishes. Colour and form reach even higher standards,” said Nawkaw Director, Tony Watling.

With one of their recent projects on 889 Collins Street, Nawkaw had the opportunity to demonstrate their products and application in which they painted a brick pattern effect on glass reinforced concrete as well as a timber effect on the fibre cement cladding façade.

The timber effect is relatively new, with a number of timber look finishes which can be achieved including Dark Jarrah, Stonewood, Charcoal, CharBrown, Cedar and Walnut.

Nawkaw is capable of an authentic timber match to a specified sample on locally produced compressed fibre cement, allowing a real look timber cladding to be achieved with the advantage of no ongoing costs such as reoiling maintenance compared to real timber.

The natural look of timber created by Nawkaw is fire resistant, passing the AS/NZS 1530.3-1999 fire testing criteria. A specialised process with Nawkaw's five stage application is involved to achieve this realistic timber finish which includes the use of base colours, translucent coatings, and special brushing techniques applied board by board.

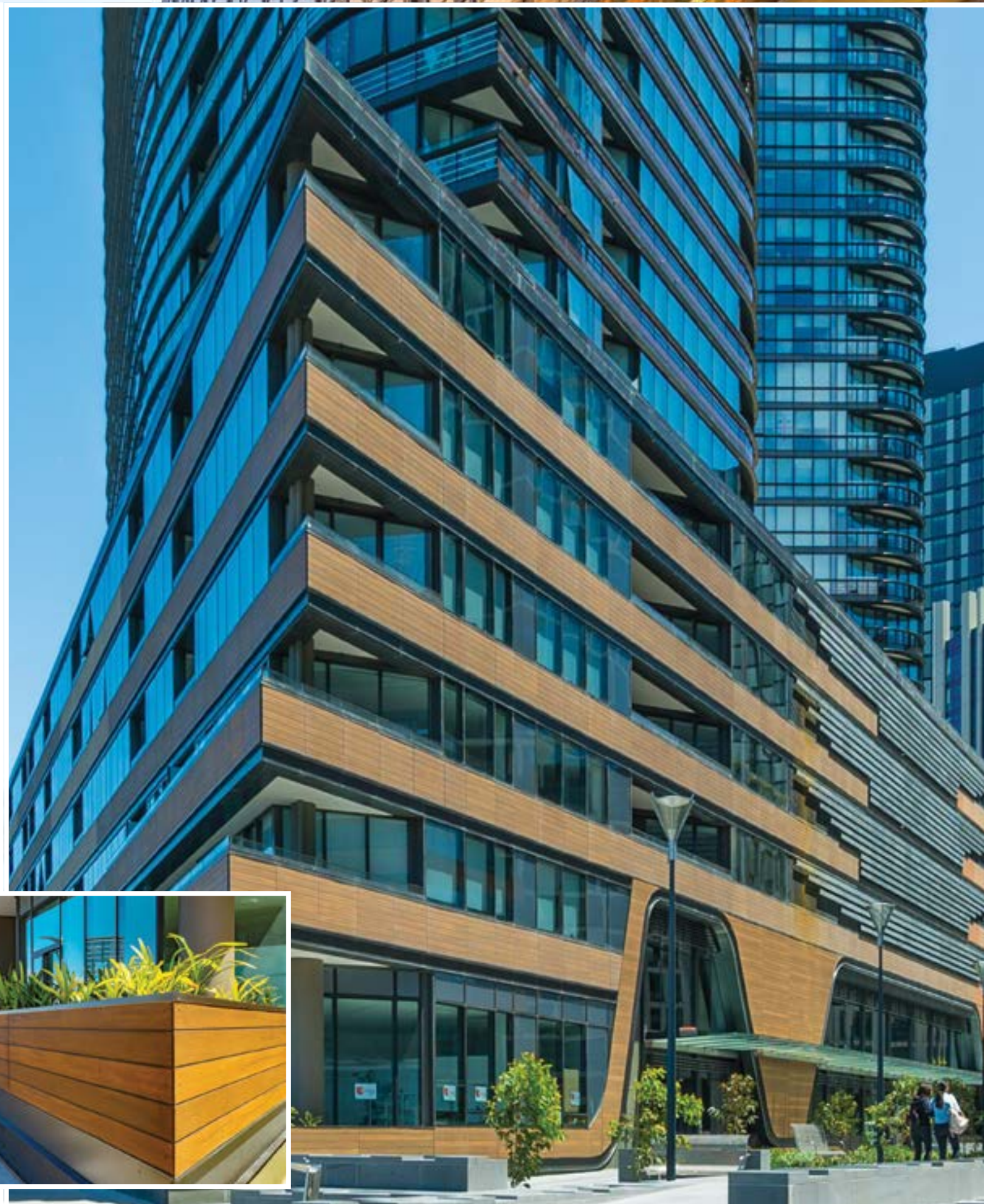
There were a couple of challenges involved in this job including the typical physical challenges of the amount of labour involved with processing the timber boards offsite in the factory, as well as typical time frame constraints and ensuring on time delivery.

Nonetheless Nawkaw developed a process of doing a significant amount of the work in their inhouse factory which expedited completion. The resulting outcome was highly satisfactory, with a very happy client. More so, it was received with very positive feedback from other sources and has become a reference site for other projects.

Nawkaw works internationally across Australia, New Zealand, Asia, North America and Canada.

In the future they are looking at servicing prefabricated construction factory made and also site applied finishes and solutions.

For more information contact Nawkaw, 39/195 Prospect Highway, Seven Hills NSW 2147, phone 1300 629 529, email sales@nawkaw.com.au, website www.nawkaw.com.au





LEDA ALUMINIUM ABOVE PAR

Leda Aluminium Pty Ltd specialises in custom design, manufacture, fabrication and installation of commercial and residential aluminium windows, doors, curtain walls, shop fronts, louvre systems, bi-folds and warranty powder coating. As an independent, family owned company with over 35 years of design, manufacturing and installation industry experience, Leda is indeed leading the way in innovative and stylish custom aluminium, glass doors and windows for a wide range of applications.

Leda Aluminium is renowned for supplying quality, locally manufactured products at affordable prices. “Our customers, who range from residential homes to large architectural properties, trust the strength and reliability of our products and our professional, friendly team and personalised service,” said Jalal Asfour, Leda Project Manager. “We have 65 full time employees now and over 50 subcontractors working for us.”

“On our latest project, the new multi-million dollar Strathfield Golf Club Event Centre we used commercial centre glazing section

throughout, with a combination of straight runs of fixes and segments to achieve the curved design,” added Jalal.

“We also had to allow for automatic doors, aluminium louvres for ventilation, hinge doors, Leda commercial heavy duty sliding doors and internal glazing as per the design to create a few enclosures.”

The highly sculptural Strathfield Golf Club building mimics the curvature of the rolling golf course greens, the undulating edges of the sand bunkers and the elliptical shape of the ‘driver’ golf club. As golf is very much a game of connection to the course and surroundings, the building design maintains a strong sense of connectivity to the course itself.

The architectural form creates drama and excitement within the space by the clever juxtaposition of spaces forming a dynamic backdrop for the interior experience. The combined area of the golf club and function centre is approximately 5,300m² with a capacity for 300 guests.

“We achieved the curved façades required in the design by utilising segments. This also kept costs minimal for the builder,” said Jalal. “We did the same curved segmented design at Merhis Gateway on Chapel Road. There, we created a segmented fixed façade and a curved bi-fold 9m wide door. Photos of this project are on our website. The new Leda heavy duty commercial sliding door is also being used on Stage 2 of the South Village in Kirrawee, as previously used at Mezzo Apartments in Glebe. We use our commercial centre glaze on the majority of our projects.”

All Leda Aluminium products provide functionality, value for money and structural integrity with the essential qualities of proven performance, reliability, style and security. They are also durable, easy to maintain and clean. Leda Aluminium designs are available in a wide choice of colours, sizes and configurations, powdered coated Dulux Duratec and Interpon colours.

“Customers can choose from many different colours and designs, plus we’ll help them find the best product to suit their requirements



and guidelines,” Jalal said. Leda Aluminium has already won awards for their work at the International Grammar School in Ultimo. Leda always provides custom quality products that comply with Australian Standards.

“As a local manufacturer we are saddened to see our industry suffering because many of the projects are importing products that lack quality and Australian Standards simply to cut costs,” Jalal added. “At Leda, we work with our clients to create the desired outcomes and finishes within their budget while ensuring quality Australian Standard products are always used.”

For more information contact Leda Aluminium Pty Ltd, Unit 2/4 Naughton Street, Greenacre NSW 2190, phone 02 9642 8588, email admin@ledaaluminium.com.au, website www.ledaaluminium.com.au

QUEENSLAND FACADE SYSTEMS BRING PEARL FACADES TO THE AUSTRALIAN MARKET

In reply to intense pricing pressure from Chinese suppliers and the unease over the quality and compliance of native Chinese product, Queensland Facade Systems (QFS) has brought to the Australian market a supply chain for Alspec aluminium windows and doors manufactured in Southeast China.

In the last few years there has been an avalanche of low cost Chinese building products into the Australian market. Some good, some not so good. To be fair, quality can be an issue from anywhere, but ensuring that a product meets our stringent codes and regulations when the entire responsibility falls to the importer is critically important.

Many have tried to source out of china with mixed results but the failures have only amplified a negative sentiment towards the practice.

QFS is among a growing number of Australian companies to conclude the solution to offshore competition and compliance is to insure that Australian designed, tested and approved product, manufactured in China, is part of their offering.

Pearl Facades with the support of Alspec, Australia's market leader in aluminium systems, is now offering manufactured supply of Alspec high performance commercial windows and doors throughout Australasia.

Hunter Evo, Altitude, ProGlide, Swan and Hawksbury are just some of the Alspec systems Pearl Facades can provide. All with NATA testing and WERS data by Alspec.

In 2019 Curtain wall is expected to join the product line along with the ability to provide ancillary products like sunshades and façade feature extrusions, folds and bracketing.

Australian designed, Australian tested, Alspec approved hardware and manufacturing procedures. The Pearl Facades bonus here is that replacement parts and materials, if needed, are readily available from any of Alspec's facilities around Australia and

specialised hardware can be delivered from within Australia.

The service offers a full array of shipping and management options (FOB, CIF & FIS) and shop drawings if required. Australian certified and delivered in steel stillages (lift tested) ready for site, the entire procurement process and programming is managed here in Australia.

Pearl Facades are currently supplying high quality Alspec product to several projects in Australia glazed with glass provided by two of the best China has to offer in XYG and ASG.

Brisbane 1 at South Brisbane – comprising 23,000m² of Grey and Grey Low-E double glazed sliding doors, fixed glazing and awning windows to three residential towers the tallest in South Brisbane at 34-storeys.

Portside Gallery House at Hamilton – comprising 11,800m² of Grey Low-E double glazed sliding doors, fixed glazing and awning windows to two residential towers 18 and 19-storeys.

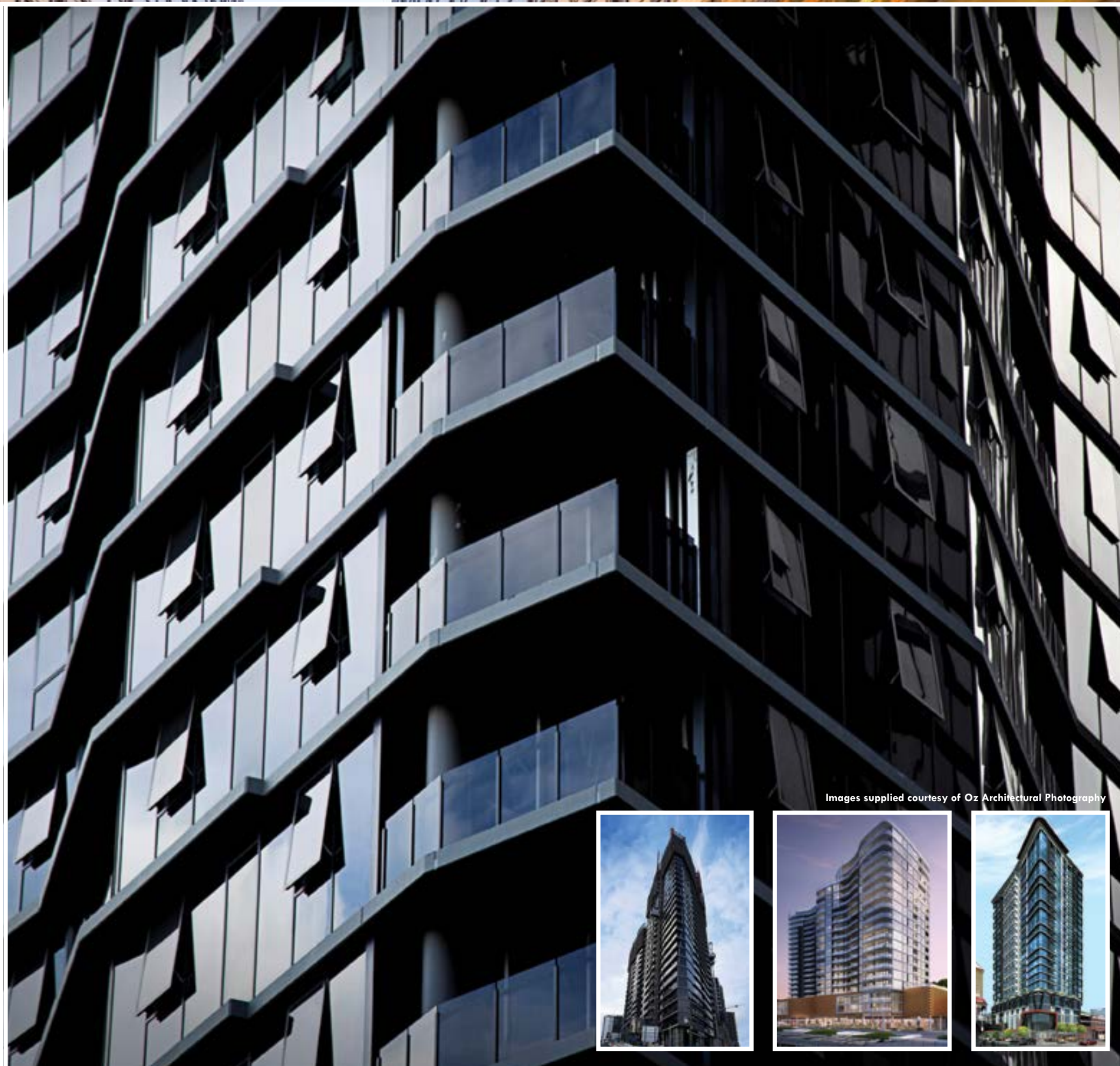
Utopia at Fortitude Valley – comprising 12,200m² of Blue Laminated 63Hz Closed Cavity Twin fixed glazing and awning windows, sliding doors, folding doors and sliding balcony enclosures with built-in balustrade that incorporates an operable maintenance panel to 25-storeys.



For more information contact Pearl Facade Systems, mobile (Peter Collishaw) 0421 454 628, email enquiries@pearlfacades.com, website www.pearlfacades.com



Or contact your local Alspec branch office.



Images supplied courtesy of Oz Architectural Photography

THE IDEAL BALANCE

Trinity Windows is a highly experienced manufacturer and installer of top quality doors, framings and windows across the commercial building market. They have earned a proud reputation for workmanship and professionalism, with many large scale projects to their credit.

The company's product offering ranges from design and construct projects including glass roofs, façade curtain walls and glass wall façade-spider fittings, to the supply and installation of commercial aluminium doors and windows including privacy and sunshade louvres, as well as refurbish projects and office partitions.

An outstanding feature of the Trinity Windows team is that all members have a minimum of fifteen years experience in all aspects of the window industry. This extensive level of experience is backed by the company's quality assurance programme which ensures the highest quality products and workmanship in keeping with all relevant BCA and Australian Standards. Trinity Windows utilises the latest technology and machinery throughout their manufacturing processes.

A recent substantial project undertaken by Trinity Windows was Block E at Wentworth Point in Sydney for Billbergia Group, a mixed use, high rise development comprising of three towers – each ranging between nine and 28-stores in height.

The site includes several levels of retail space, together with a Coles supermarket and is an integral part of the prestigious Wentworth Point precinct offering high end finishes in one of Sydney's most vibrant and picturesque suburbs.

Directors of Trinity Windows, Robert Betrous and Rene Revano, said that Trinity Windows manufactured and installed a curved curtain wall, metal cladding and treated glass for the exterior of the building. "We also provided windows, sliding doors and louvres for apartments. The shopping centre component of the project was also supplied with Trinity Windows' aluminium windows and doors. The project involved up to 40 of Trinity Windows' employees."

The company will undertake any project irrespective of the size and type. "We will

design, fabricate and install all window and door systems," said Robert. "We always coordinate with the project architect and builder to ensure all specifications are met in a timely manner and within budget."

Trinity Windows begins any project by accurately measuring windows and doors to ensure they are manufactured for a perfect fit. Every window ordered is individually made for the client. Their products offer the ideal balance between style and function, using a versatile frame which provides a modern slimline look. The products are low maintenance, easy to clean and will enhance any home or apartment with its modern, sleek lines.

The commercial range includes single glaze and double glaze framing systems designed to meet the ever growing requirements of the building sector for sustainable and energy efficient window systems which also reduce exterior noise entering the building. Available in 100mm and 150mm platforms Trinity Windows aluminium framing incorporates strong, bold profiles enabling large expanses of glazing to be achieved.

Aluminium doors are available in a range of designer colours and can be installed with folding, stacking or sliding movements, whichever best suits the application. The offered doors are designed using quality approved metal procured from trusted vendors in the market and sophisticated machines in compliance with set industrial norms. Trinity's doors are widely appreciated by clients due to their sturdiness and durability.

In recent years, Trinity Windows has completed several projects at Wentworth Point for Billbergia. They also worked with Billbergia on Australia Tower 1 at Sydney Olympic Park. Parkview Constructions has also contracted Trinity Windows on a number of its major projects including Australia Towers 2 and 3 at Olympic Park, The Gantry in Camperdown and Quay Street, Haymarket.

For more information contact Trinity Windows Pty Ltd, 91 Mandoon Road, Girraween NSW 2145, phone 02 9631 5577, email info@trinitywindows.com.au, website www.trinitywindows.com.au





SOLVING ALL YOUR CLADDING SOLUTIONS

Collmill Group has been providing Melbourne with bespoke architectural cladding, lightweight modularised façade framing and prefabricated solutions for high end domestic builds, shopping centres, apartment towers and commercial construction projects since 2009.

“The skills of our expert tradesmen can be seen on a range of Melbourne landmarks including more recently the Melbourne Convention Centre, where we modularised the façade cladding and prefabricated the wall modules offsite,” said Collmill Group Director, Andrew Mitchell. “This process allows us to get a head start on fabrication and to keep up with a tight construction programme onsite. We can install approximately three times the amount in a day compared to tradition installation methods.”

Collmill Group design, engineer, fabricate and install the entire façade for all of their projects. The company’s up-to-date manufacturing techniques and offsite manufacturing minimise time onsite, creating efficiency and productivity. “Our goal is to provide cost effective cladding solutions for our clients and effectively deliver the desired project outcomes and aesthetics for the architects and head contractors,” said Andrew.

Collmill Group are experienced in working with a range of façade cladding materials and prefabricated modularised façade cladding panels.

“Our materials range includes a wide variety of solid aluminium cladding, non-combustible aluminium composite panels and any other metal cladding systems typically associated with architecturally designed buildings. The Collmill Group team are specialists when it comes to working with architectural perforated aluminium, adding an extra element to our installation capabilities,” added Andrew. “We also manufacture lightweight steel framing behind the cladding to engineering specifications using Australian made steel, TRUECORE® by BlueScope. Our professional team prides themselves on premium workmanship, customer service and efficiency.”

For all your modular walls, architectural cladding designed for exterior façades and prefabrication building solutions talk directly to the Collmill Group professionals today.

For more information contact Collmill Group, 70 Endeavour Way, Sunshine West VIC 3020, phone 03 9315 2660, email admin@collmillgroup.com.au, website www.collmillgroup.com.au



FUSING BEAUTY AND FUNCTIONALITY

Fabmetal Specialists have a motto which beautifully describes their work; ‘Our edge is quality and craftsmanship’, however it’s their ability to design, value manage and draft in 3D, solving complex metal work, managing, fabricating and installing on some of Melbourne’s iconic landmark projects that sets them apart.

The evidence of the company’s success in bringing architectural form to life in a striking and functional manner can be seen at the University of Melbourne’s Art West building, designed by ARM architects.

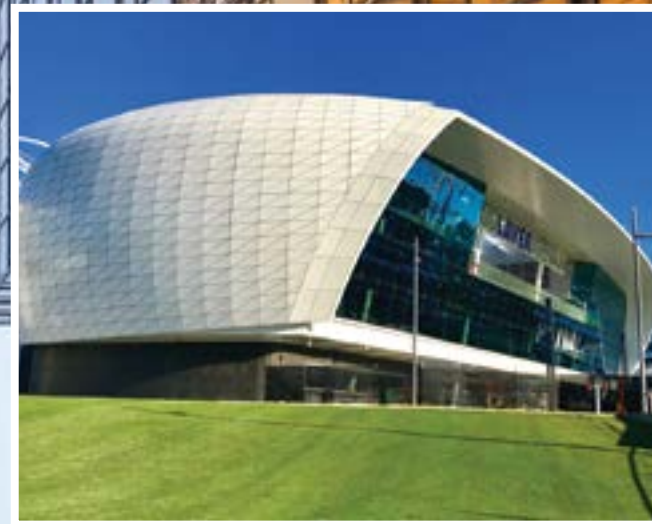
“Fabmetal manufactured the outer skin of the building from 8mm steel plate fins curved in plan and elevation weld fixed to a structural RHS frame modules complete with a hot dip galvanised finish Fabmetal Specialists Managing Director, Gordon Heald. Commented “In total, there were around 250 tonnes of steel used in the project, which featured individually plasma cut and rolled curved steel fins in 480 modules forming a louvered facade. creating a stunning 3D visual feature when the building is viewed from below and above.

This outstanding façade has delivered functionality as a protective screen from the impact of rain and sun, whilst presenting as an architectural statement unique to the Melbourne skyline

The University of Melbourne’s Art West building has won multiple International and National awards including both the Australian and World Galvanisers Association Awards – the first to ever be awarded outside Europe, earning Fabmetal the Victorian Subcontractor of the Year with Kane constructions 2017. Kane won the prestigious award of Master Builder of the Year to 40 million (Commercial) and Arts West was awarded the AIA Educational Architecture Award.

Fabmetal Specialists are great advocates for incorporating metalwork into the designs of building façades, feature walls doors and balustrades. The company has built a reputation for providing design and construct solutions for many architectural projects, delivering complex geometric products of the highest quality finish. Fabmetal Specialists’ metal cladding work is featured in many of Melbourne’s best-known landmarks, including the National Gallery of Victoria, Flinders Street Station, Federation Square, the State Library, Melbourne Docklands, Crown Casino, University of Adelaide, Star Casino Sydney and major shopping complexes.

For more information contact Fabmetal Specialists, 7 Jersey Road, Bayswater VIC 3153, phone 03 9720 2177, email enquiries@fabmetal.com.au, website www.fabmetal.com.au



FROM CONCEPT TO A REALITY

Façade Concept has an extensive record of achievement in the design, supply and installation of all types of commercial façades.

Established in 2008 the company was created to deliver quality façade solutions at competitive prices with an unprecedented safety reputation.

Façade Concept provides curtain walls, commercial windows, fixed and mechanical louvres, stainless and glass balustrades and toughened glass assemblies. They pride themselves on their capacity to keep the majority of contract works inhouse.

Director Jordan Moyle said that Façade Concept has their own team of qualified glaziers, carpenters, riggers, dogmen and crane operators. “We can fabricate and install without needing to use secondary contractors, ensuring the highest quality control and delivery.”

Jordan added that all Façade Concept’s window systems and hardware are Australian designed and have been certified in Australian NATA testing laboratories. “We only use hardware sourced from trusted Australian brands such as Doric and give full locally-backed warranties on all products and services.”

Façade Concept is able to offer clients large savings with their extensive experience in the international importation of quality glass and aluminium products manufactured to the highest standards.

The company has undertaken many complex projects around Sydney and Canberra, including Bankstown Gardens which features a spectacular curved façade incorporating all apartment windows. Jordan said that Façade Concept unitised the components offsite then delivered to site for faster installation. In fact, the total façade was installed in just three weeks.

“We have the skills and experience to design, engineer, manufacture and install all façades, ensuring a cost-effective solution to meet all types of environmental energy ratings,” Jordan said. “We welcome the opportunity to quote on any façade project.”

For more information contact Façade Concept Pty Ltd, 4/1-13 Atkinson Road, Taren Point NSW 2229, phone 02 9525 5446, email sales@facadeconcept.com.au, website www.facadeconcept.com.au

QUALITY TAILORED CLADDING

After moving to Australia from Ireland, Michael Slowey established Custom Architectural Solutions six years ago seeing the potential for a customer focused, quality façade production and installation company.

Trading as Custom Clad, the company specialises in high end residential and commercial architectural façade cladding. “We provide a full range of façade composite cladding, commercial windows, louvres, privacy screens, and balustrading for new and existing buildings,” explained Michael.

“Today we employ around 50-60 personnel comprising of professionally qualified estimators, designer/drafters, project managers and highly skilled commercial carpenters and factory manufacturers.”

It’s Custom Clad’s excellence in a variety of projects that now sees them as one of Australia’s most highly regarded façade companies. “By taking on unique projects, such as Melbourne Park redevelopment, it pushes our team to utilise their skills and professionalism and think outside the box to bring a design to fruition and one they, and our clients can be proud,” said Michael.

Recently Custom Clad have been contracted to complete both internal and external works on the Rod Laver Arena. “The Melbourne Park redevelopment is a highly complex design of curved elements and geometric shapes,” explained Michael.

“We have produced the façade through a mixture of factory and site built modular aluminium elements. The majority of the cladding is powder coated aluminium panels that have been manufactured directly from our drafting teams 3D models on our CNC machines.”

Custom Clad powder coated solid aluminium can be seen on the Rod Laver Arena redevelopment, 477 Collins Street (Mirvac), Sunshine Hospital (Cockram).

The future is looking promising for Custom Clad’s young, dynamic team as they work with Mirvac, Probuild, Icon, Hutchinson Builders and others.

For more information contact Custom Clad, 30-32 Apollo Drive, Hallam VIC 3803, phone 03 9791 2904, email info@customclad.com.au, website www.cutomclad.com.au



BOOMERANG

AMA Windows + Glass Facades commenced in 2005 and their industry experience combines to a total of some 50 years of knowledge in the façade industry.

The company have aligned themselves with some of the best professionals, designers, engineers and manufacturers that the market place has on offer. They are specialists in the design and manufacture of architectural commercial grade aluminium windows, doors, curtain walls, and frameless glass entries.

The highly experienced AMA team are committed to producing vast products of the highest standard, and has a combined knowledge base that varies from managing multi-density/high rise to complex commercial buildings.

Boomerang is testament to that! This project has over 25,000 individual pieces of terracotta baguettes in a vast array of colours. Each level of the low rise has over 180 different angles to reflect the complex design intent of architect, Bates Smart.

“Our impressive team headed by Wayne worked tirelessly with everybody to come up with this magnificent outcome that will stand

39-storeys tall in Homebush next to our last project in the precinct,” said Basil Micos. “We look forward to sharing with you all the successful completion of yet another impressive tower completed by AMA in the precinct over the coming months.”

For more information contact AMA Windows + Glass Facades, phone 02 9666 9992, fax 02 9666 9994, email info@amawindows.com.au, website www.amawindows.com.au



HOT STUFF

Tomark Group is a leading architectural cladding supplier specialising in fabrication and installation of aluminium composite panels and all other forms of cladding for building façades and interior feature works.

They offer consultancy, project management, design and installation of any façade system with consistent quality.

“Tomark is about detail and complex projects. We assist any architect on any project to find a solution and complete their vision. We work with the biggest construction companies in Sydney, and always aim for client satisfaction. Our way is different to other companies and we have a determined approach to planning, fabricating and installing. That is why we have lasted so long in the industry and still getting more clients every year,” said Zvonimir Kurtovic, Managing Director at Tomark Group.

Recently completing the Fire and Rescue NSW Emergency Services Academy in Orchard Hills, Tomark Group supplied and installed the external façade cladding. The job was architectural complex and used the cassette panel system involving various dimensions that required a high amount of skill.

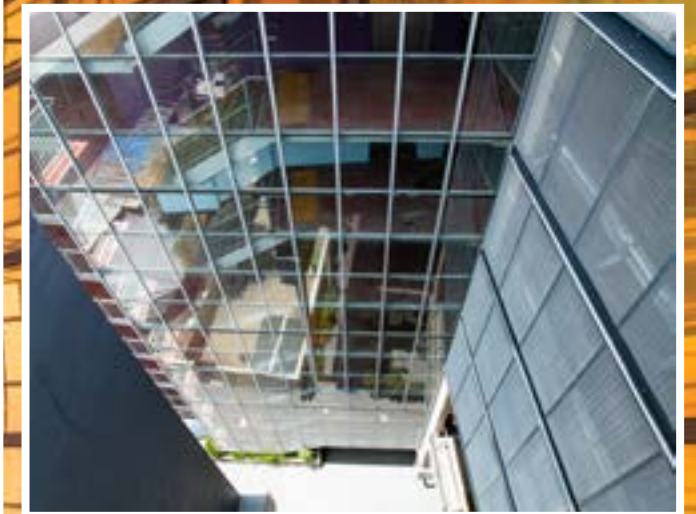


Tomark used the new generation Larcore A2 aluminium honeycomb panels (supplied by Alucol Composites Pty Ltd a Global Manufacturer), on this project and several other projects around Sydney, which offer outstanding properties compared to traditional architectural materials. It is lighter, offers greater moment of inertia and rigidity, and has high fire-proof rating and acoustic insulation, as well as the added benefit of reduced assembly time and cost.

The new standards on cladding and façades means that traditional materials are no longer up to par, however Tomark Group ensures to use the latest innovative products that exceed certification standards and benchmarks.

Tomark Group is based in Sydney with nationwide service. Other projects they currently have include the Westconnex in inner city Sydney for John Holland, The Emanuel Private school in Randwick for Ichor construction, as well as working on major private developments in Sydney covering up to 6,000m².

For more information contact Tomark Group, Suite 508, Henry Lawson Building, 19 Roseby Street, Drummoyne NSW 2047, phone 02 9719 8690, email info@tomark.com.au, website www.tomark.com.au



KEYSTONE SINCE 1987

Establishing Keystone Installations in 1987, father and son team, Rudy and Robert Callipari have been providing professional façade services for some of the most significant construction projects in Australia.

Today their highly experienced team provide a range of design, fabrication, supply and installation of commercial aluminium façades.

“Using the latest machinery and façade installation techniques to suit industry standards, Keystone is now recognised in the Melbourne market as a contractor of high quality work,” said Keystone Director, Robert Callipari. “We are façade installers for some of the best global and Australian aluminium curtain wall manufacturers.”

Keystone specialise in aluminium curtain wall installation, architectural cladding, windows and doors, shopfronts, atriums, planar glass walls and any specialised façade work and labour hire services to the façade installation industry.

“Our highly skilled team consists of site managers/supervisors, licensed crane operators, dogmen, carpenters, labourers, OHS and first aid representatives, ensuring workplace façade installation methods

are in place,” Robert continued. “All staff are fully licensed to meet industry standards and use the latest façade installation methods and machinery to erect unitised curtain walls onsite, ensuring our continued excellent reputation with clients.”

Before installation, all Keystone curtain wall systems are subjected to full scale mockups for performance tests to verify the performance of new designs.

Some of their more recognisable projects around Melbourne include Vogue and The Avenue in South Yarra, ANZ and Myer buildings in Docklands. “Our latest projects include EQ Tower at A’Beckett Street, Marina Tower at Docklands, Victoria One CBD, Shadowplay at Southbank, 271 Spring Street, 599 Swanston Street and 16-32 Leicester Street, Carlton,” added Robert. “And we’re now working on Melbourne Quarter R1, M2Q Docklands, 350 Queens Place and 601 St Kilda Road.”

For more information contact Keystone Installations, Factory 2/35 Northgate Drive, Thomastown VIC 3083, mobile (Robert) 0412 407 775, email info@keystoneinstallations.com.au, website www.keystoneinstallations.com.au

LEADING EDGE SOLUTIONS



From a small aluminium window business servicing single storey buildings in 2004, RJS Aluminium has soared upwards and is Sydney’s leading supplier of aluminium windows, doors and curtain walls for domestic and commercial highrise applications.

RJS Aluminium recently completed the 32-storey Skyhaus apartment building in Liverpool and also the 18,000m² Equinix Sy3 facility at Alexandria, the largest data centre storage facilities in inner South Sydney for John Holland.

When RJS Managing Director, Robert Sarkis arrived in Australia from Lebanon, he originally wanted to be an architect. Today, he now works at creating architectural glass masterpieces with builders. “We used RJS Aluminium, Architectural Frameless Glass and Spider Patch Fittings at the Equinix facility. In a first for Australia, the building not only looks spectacular but it also achieves a US Green Council Gold LEED rating,” said Robert.

All RJS products are tailor-made and manufactured in Australia to Australian Standards. “Unlike most aluminium companies, we also provide high quality architectural glass right here in Australia,” explained Robert.

RJS Aluminium Architectural Glass was used at the Auburn Carpark (1 Susan Street), Eden Residencies (Wolli Creek), 88 Kensington on Anzac Parade, The George (Burwood) and in many other projects.

RJS Aluminium custom designs and manufactures products for a range of outstanding projects, including the EDO project by award-winning architects Stanisc Associates, the luxury SOHO Residential Apartments and Cote d’Azur Apartments.

“Our unparalleled customer service also means that when you choose RJS Aluminium, your satisfaction is assured,” added Robert. “You’ll also gain the benefit of working with a team that encompasses a broad knowledge base from architecture through to building. Having such expertise on board enables us to easily communicate and implement your plans, resulting in the outcome you desire.”

For more information contact RJS Aluminium, 5 Cottam Avenue, Bankstown NSW 2200, phone 02 9790 3445, email enquiries@rjsaluminium.com.au, website www.rjsaluminium.com.au