

# A MIGHTY MASTERPIECE

**MAIN CONSTRUCTION COMPANY : St Hilliers Property Pty Limited**

**ARCHITECT : dKO Architecture**

**STRUCTURAL ENGINEER : SDS Engineering**

**DEVELOPMENT VALUE : \$100 million**

Purposefully designed to be Penrith's new exciting hub, the \$100 million Centurion is the latest stage of the Thornton Central development to welcome residents into the much acclaimed, cornerstone project of the region.

**The project is spearheaded by the joint venture of developers First Point Properties and St Hilliers, with St Hilliers engaged to undertake the construction of the Thornton Central project, including the recently completed Centurion project (Stage 2 of the development).**

Thornton is the first high rise residential apartment and retail precinct to be built in Penrith's city centre and is the catalyst to Penrith's much acclaimed city transformation as part of the wider Thornton community, masterplanned by Urban Growth NSW.

As one of three strategic regional cities in Sydney, Penrith plays a major role in growing health, education, business and recreation offerings and has been a clear focus for government spending recently to alleviate the housing shortage in Sydney evident through strong dwelling approvals in recent years.

St Hilliers continues to work collaboratively with all key stakeholders including Urban Growth NSW, Penrith City Council and the NSW Government during concept design phases to ensure the development exceeds all expectations and delivers an exceptional facility.

After the successful completion of the 151 Stage 1 apartment complex, Centurion is Stage 2 of the development and involved the design and construction of 191 spacious one, two and three bedroom apartments, across three towers varying in height up to eight levels, with a sophisticated and refined scheme incorporating an upmarket design at an affordable value.

The project features a combination of precast, brickwork, paved and timber finishes, throughout a shared common Ground Floor Podium, a multi-level carpark as well as public open spaces surrounded by an array of green areas to create a truly liveable environment.

Commencing in January 2016, the team successfully delivered the project on time and on budget this September. Keeping sustainability and environmental awareness in mind they also achieved a 97% recycling rate for the Stage 2 project.

With over 300 workers onsite during peak periods for Centurion, the Thornton Central development has now inducted over 2,100 workers over the course of the construction phase and has assisted in the creation of 770 new jobs in the Penrith central business district.

The company's focus on the community is to be further commended with their support of Kids West, a local volunteer charity that supports paediatric and neonatal intensive care units across Western Sydney. The team has now raised over \$18,000 to date since the beginning of the Thornton Central project and will continue to raise funds through the next stages of the development, with all proceeds going towards Kids West.

Current stages under construction include the Sheffield project, Stage 3 of the development which consists of 214 sophisticated one, two and three bedroom apartments, each architecturally designed by award winning architect Group GSA and featuring double level loft style penthouses with floor-to-ceiling double height glazing.

St Hilliers are also well down the construction path of a new 115-key Quest Apartment Hotel including a mix of studio and one bedroom configurations over seven levels along with a conference and business facilities, a guest gym and a café. Planning for future stages for the mixed use development is well underway.

St Hilliers is an integrated property and construction group providing expertise

and services in design management, cost planning, civil and building construction, refurbishment, and property development.

The company, now in its 28th year of business, prides itself on its diverse national portfolio of projects in every state and territory of mainland Australia.

Projects range from the delivery of highly secure defence facilities, civil infrastructure upgrades for regional councils, through to the development and construction of residential and commercial high rises.

***For more information contact St Hilliers Property Pty Limited, Level 3 (Ground Floor), 8 Windmill Street, Millers Point NSW 2000, phone 02 9259 5200, website [www.sthilliers.com.au](http://www.sthilliers.com.au)***





**Below** Precise Windows & Doors installed all of the windows and doors on the Centurion project in Sydney.

**Precise Windows & Doors have a dynamic capacity to design, manufacture and install, high quality aluminium doors and windows which ensures that all of the access and ventilation was taken care of for the Centurion.** The company was responsible for the installation of all the windows and doors in all of the residential units.

The choice to use aluminium frames – a strong and light product, meant Precise Windows & Doors were able to minimise the thickness of the frames and allow for larger, unobstructed views through the glass sliding doors and the windows. The frames were dressed both internally and externally to ensure that they are protected from weathering and erosion, and the addition of sub sills and sub heads prevents water leakage.

The doors and windows installed were top of the range. As with most parts of Australia which can reach scorching temperatures in the summer, it was important to reduce the amount of heat that was entering the apartments caused by the thermal effects of solar radiation hitting the glass doors and windows.

Precise Windows & Doors used low-emissivity glass with a 101.6mm single centre pocket glazing system, which minimises the amount of ultraviolet and infrared light passing through the glass, without compromising the amount of visible light entering the apartments. This allows the interior of the apartments to remain brightly lit in the day while providing passive heating and cooling, reducing the need for air conditioning and has contributed to the improved efficiency and energy rating of the units.

Most of the sliding doors and some of the windows also have an air intake grill added above them to allow further air flow into the apartments which provides additional breathing comfort without compromising on insulation, security and aesthetics.

Precise Windows & Doors’ 25 years of experience in the industry and their knowledge of innovative, state-of-the-art

products proved to be invaluable for this construction. The team of 12 were able to complete their part within the nine months schedule, and were able to carefully manage all aspects of supplying and installing the windows and doors on the Centurion.

Precise Windows & Doors were honoured to have worked on this project with St Hilliers, as well as the other collaborators that contributed to the construction of the complex.

“Everyone was really professional and great to work with, it was a congenial collaboration that facilitated the progress of the Centurion complex which allowed us to complete our part of the project with optimal standards and in a timely manner. I would be more than happy to work with them again in the future,” said Dani Alzened, Managing Director for Precise Windows & Doors.

Precise Windows & Doors focuses their work in New South Wales and are currently working on another major project on 1 Avon Road in Pymble; a development of 174 apartments that aims to synergise with the beautiful surroundings of the blue gums forest, which no doubt emphasises the importance of doors and windows that provide a harmonious balance for viewing satisfaction.

**For more information contact Precise Windows & Doors**, 99 Percival Road, Smithfield NSW 2164, phone 02 9756 5882, fax 02 9757 1330, email [sales@precisewindowsanddoors.com.au](mailto:sales@precisewindowsanddoors.com.au), website [www.precisewindowsanddoors.com.au](http://www.precisewindowsanddoors.com.au)





**Below** ADI Corporation carried out all carpentry and joinery installation throughout 191 apartments over a four week period.



**Below** McKanna Fabrications supplied and installed structural steel awnings, pergola frames and carpark entry structures.



**The ADI Group is comprised of three related companies which provide a range of services.** ADI Corporation (AUST) is a carpentry and door based works specialist; ADI Holdings focuses on aluminum windows, curtain walls and glazing; and ADI Onsite provides skilled labour hire including general labour, skilled carpenters, supervisors and windows and joinery installation specialists.

For the Centurion, ADI Corporation carried out the joinery installation for Stage 2 and will be undertaking the Stage 3 installation as well as the general doors and fire doors package. Although ADI Corporation experienced no notable challenges, they managed to complete all the joinery installation for 191 apartments within four weeks, which is quite a feat to undertake that amount of work in such a short, accelerated time frame. It stands as a testament of their reliability and efficiency.

“ADI is committed to supporting our clients from project inception through to delivery and completion and we pride ourselves on being the contractor of choice for many of our clients. We support our projects with skilled supervision and tradesmen dedicated to doing the job right the first time. ADI is proud of our workforce and the quality of work we continually provide,” Said Joe Lorefice, Spokesman for ADI Corporation.

ADI Corporation commenced working at Centurion in May 2017 with a peak of 25 employees. They have further secured the design, supply and installation of the windows and doors, inclusive of metal frames and hardware for the two 10-storey towers at Thornton set to be completed by October 2018. ADI Corporation is rapidly expanding their Aluminium and Glazing division within the medium rise sector of construction, whilst targeting challenging and none standard projects for their current client.

ADI Corporation works mainly in New South Wales with plans to expand nationally. They are currently undertaking projects with Mirvac (Moreton, Harold Park, Lachlan Street Waterloo, Green Square), Toga (Habour-Front Balmain), Hutchinson Builders (VUE Bondi Junction, Pacific Bondi Beach, Schofield Residential Estate, Global Switch Carpentry Works), and Watpac (Ryde Gardens).

**For more information contact ADI Corporation,** Unit 10, 16 Aquatic Drive, Frenchs Forest NSW 2086, phone 02 8964 4304, email [info@adicorp.com.au](mailto:info@adicorp.com.au), website [www.adicorp.com.au](http://www.adicorp.com.au), [www.adionsite.com.au](http://www.adionsite.com.au)

**McKanna Fabrications is a leading company in the fabrication of structural steel for residential and commercial areas, specialising in metalwork and steel fabrications, universal beams, stainless and aluminium welding, metal rolling and bending, balustrades, commercial building construction and other architectural applications.** They also construct large curved spiral staircases incorporating steel and timber, along with treads, handrails and LED lighting.

The company were involved in the Centurion at Penrith as well as other stages of the Thornton development. They supplied and installed structural steel awnings, structural steel pergola frames and structural steel carpark entry structures. They also constructed architectural steel arbour entries, painted with a three coat system, as well as installing stainless steel cable wires that ran between the pergola frames, awnings and carpark entries which will have climbing plants growing on them.

McKanna Fabrications’ work was mainly external around the buildings with high impact and visibility. Their work played an integral part of the design and architectural aesthetics of the Centurion and Thornton project. As such, a high degree of attention was committed to the

details to ensure that everything was artistically pleasing. With their extensive experience they had no difficulty in delivering.

For Centurion, McKanna Fabrications had a team of five fabricators offsite as well as five contractors completing installations onsite. Despite access being tight and very limited, the team from McKanna managed to work around that by using a large crane that lifted a small crane around as required, allowing them to install fabrications in intricate areas.

McKanna Fabrications operates across New South Wales and also Queensland, and they were part of a specialised project in Canada which involved a large rotating home. Other projects they’re currently working on include the cinema complex in Westfield Kotara, Shearwater apartments in Warners bay, and the Bonython towers in Gosford.

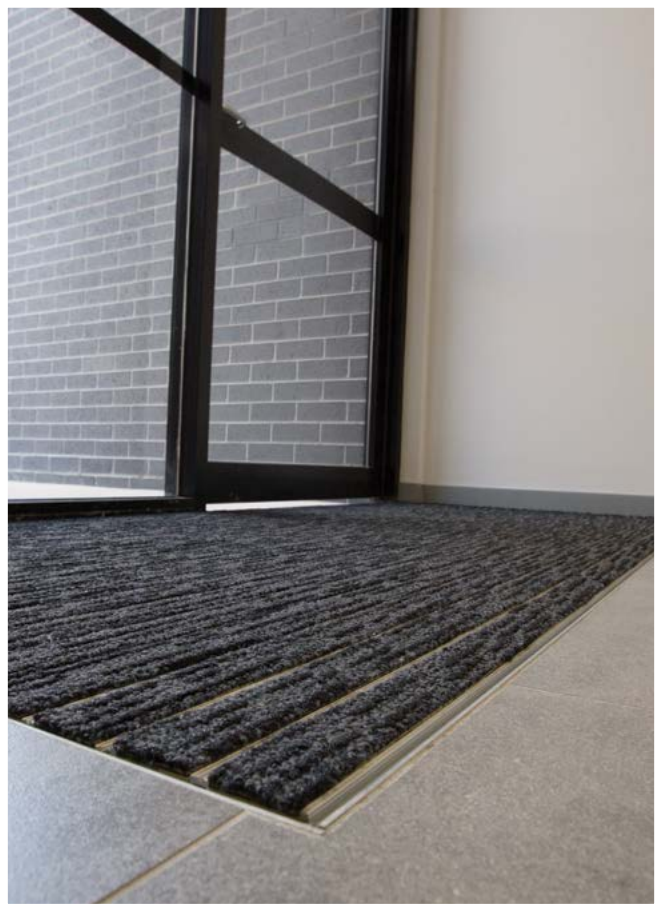
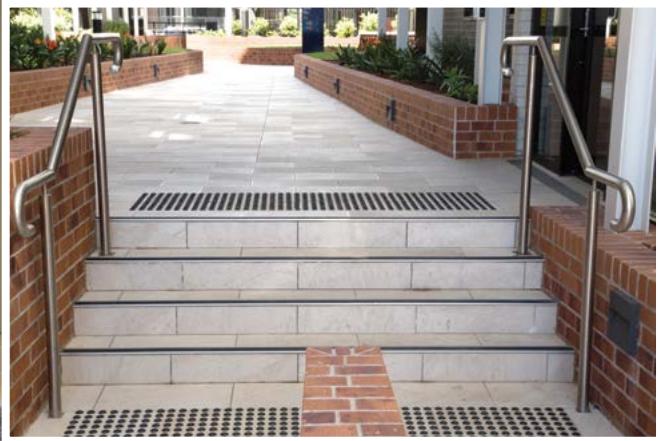
**For more information contact McKanna Fabrications Pty Ltd,** Industrial Estate, Sweet Street, Warners Bay NSW 2285, phone 02 4947 3375, email [jason@mckannafabs.com.au](mailto:jason@mckannafabs.com.au), website [www.mckannafabs.com.au](http://www.mckannafabs.com.au)



**Below** Classic Architectural Group supplied and installed quality floor safety products and carpark safety solutions.



Centurion, New South Wales



**Classic Architectural Group is a quality supplier of floor safety products, skate deterrents, architectural entrance matting systems and carpark safety solutions.** Their range of products and the knowledge of their standards and application is why they were chosen as the preferred provider for the floor safety solutions for the Centurion, Thornton project.

The breadth of their work included the installation of A138R aluminium stair nosing in silver anodised finish with black grit tape insert, individual Polymer Tactile indicators and the Integra Vantt 5500 Series entrance mat.

Classic Architectural Group had up to four installers onsite. They supplied their products at different phases of the project with the first set delivered in June 2017 and completed installation by August 2017. The company experienced no major difficulties and conducted their work smoothly in conjunction with other contractors.

“Every team onsite was extremely helpful and worked seamlessly with our teams to ensure that the products were brought in and installed to everyone’s satisfaction within the stipulated timelines,” said Sujet Sankar, Spokesman for Classic Architectural Group. “Our motto is

to make our customers’ access issues disappear and every employee is driven by our core values of being rigorous, respectful, responsible and resourceful.”

Classic Architectural Group operate all across Australia, with the majority of their projects in Victoria, New South Wales and Queensland. They also supply their products in New Zealand and the United States of America through partners as well as direct sales.

Some of their award winning projects from this year include the University of Melbourne, Arts West; Victorian Comprehensive Cancer Centre; Deakin University, Building M; Vermont Medical Centre; Vision Apartments, Melbourne; ATO, Dandenong; Royal Adelaide Hospital; Lego Discovery Centre Chadstone; Chadstone Shopping Centre; Werribee Sports and Fitness Centre and Sydney Cricket Ground.

***For more information contact Classic Architectural Group, 13 Bourke Street, North Parramatta NSW 2151, phone 1300 244 377, fax 1300 768 876, email enquiry@classic-arch.com, website www.classic-arch.com***