



# CENTRE FOR ADVANCED IMAGING



# At your service...

Master Lifts has teamed up with the world's leading manufacturer of service lifts. Daldoss invented the electronic service lift and has more than 100,000 service lifts installed worldwide. A larger number than any other manufacturer.

Master Lifts offers the full range of Daldoss service lifts with capacities from 24-300kgs, up to 30 metres travel range, up to 12 stops – and pretty much any size, colour and finish you like. Suits any residential and commercial use. Give us a call...



Call 1300 454 387  
[www.masterlifts.com.au](http://www.masterlifts.com.au)



## LOWLINE'S CHEVRON 'ELLENBOROUGH SERIES' BLADES ADDS ELEGANCE

**The contemporary vertical louvres flanking the ground floor of Queensland's Centre for Advanced Imaging create a sleek finish on this research and medical building.**

Installed by Lowline Group, the Chevron louvre blades beautify a plain wall, screen plant equipment and provide ventilation. They are a "block out" blade, providing complete privacy in both directions, and part of Lowline's newer Ellenborough range.

The fixed louvres are positioned around half of the building's perimeter, as well as on the building's top level, the sixth floor, where they help conceal air conditioning and plant equipment.

On the lower levels, the vertical blades are not just used as a form of cladding to beautify the walls. Behind them are ventilation louvres providing airflow for mechanical equipment such as air conditioning. Altogether there are about 500sqm of extruded aluminium blades, which have a 15-year warranty powder coat finish.

The blades cover not only a good part of the first floor, but also a large section measuring about 3.6m by 12m on the sixth floor deck. This upper section combines with aluminium cladding to screen air-conditioning units.

Lowline is a family business, which has operated since the early 1990s.

Lowline employs about 50 people and has expanded out of Queensland to undertake work throughout Australia. It has projects in Sydney, Perth, Victoria, the Northern Territory, South Australia and northern Queensland.

**For more information contact Lowline Group,** 11 William Street, Blackstone, QLD 4304, phone 1300 lowline or 07 3816 5600, fax 07 3816 2069, email [sales@lowlinegroup.com](mailto:sales@lowlinegroup.com), website [www.lowlinegroup.com](http://www.lowlinegroup.com)







## CONTEMPORARY ALUMINIUM CLADDING

Contemporary aluminium exterior cladding and a stunning ceiling add a touch of glamour to Queensland's Centre for Advanced Imaging. Auzmet Architectural produced a complex sapphire panel for the lunchroom's ceiling with an anodized aluminium sheet.

"It was all sorts of different aluminium panels put together," Auzmet Architectural director Shane Tucker explained. "Yellows, greens and a natural silver aluminium."

The architect developed the concept then Auzmet Architectural brought it to life. But it is the building's exterior where the cutting-edge work is best showcased.

Auzmet Architectural has produced aluminium composite panels on the building's north and east elevations. The six storeys of mid-grey coloured cladding stretches over about 12000sqm. The precise process took about 14 weeks. First, the spaces for the panels were framed up externally on the site. Then the measurements were taken and the aluminium sheets were made in the factory, and installed onsite.

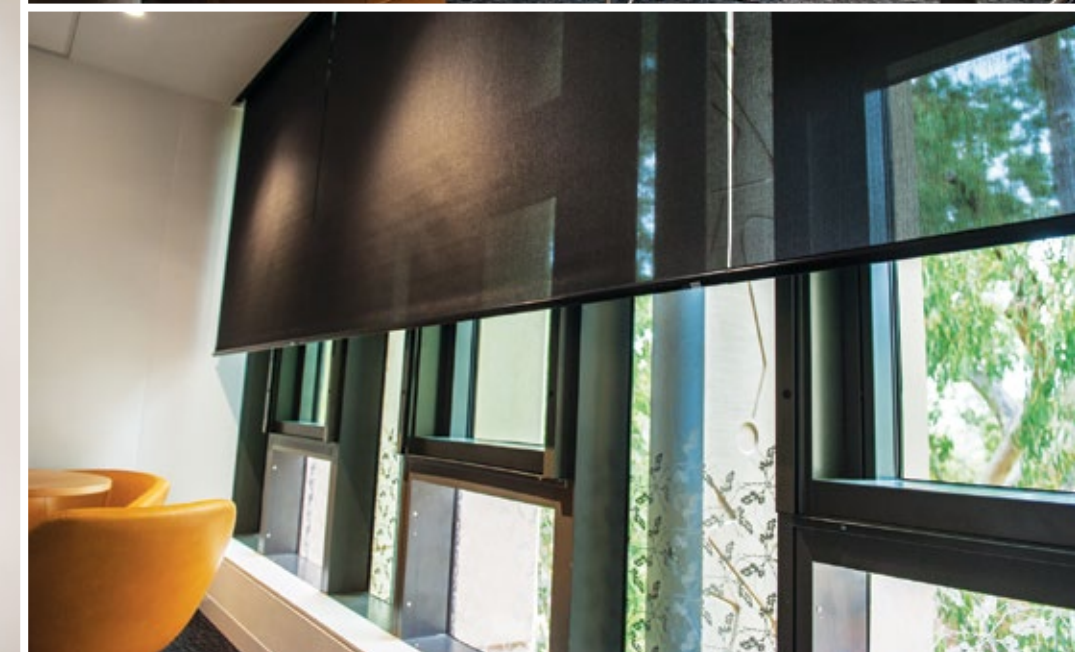
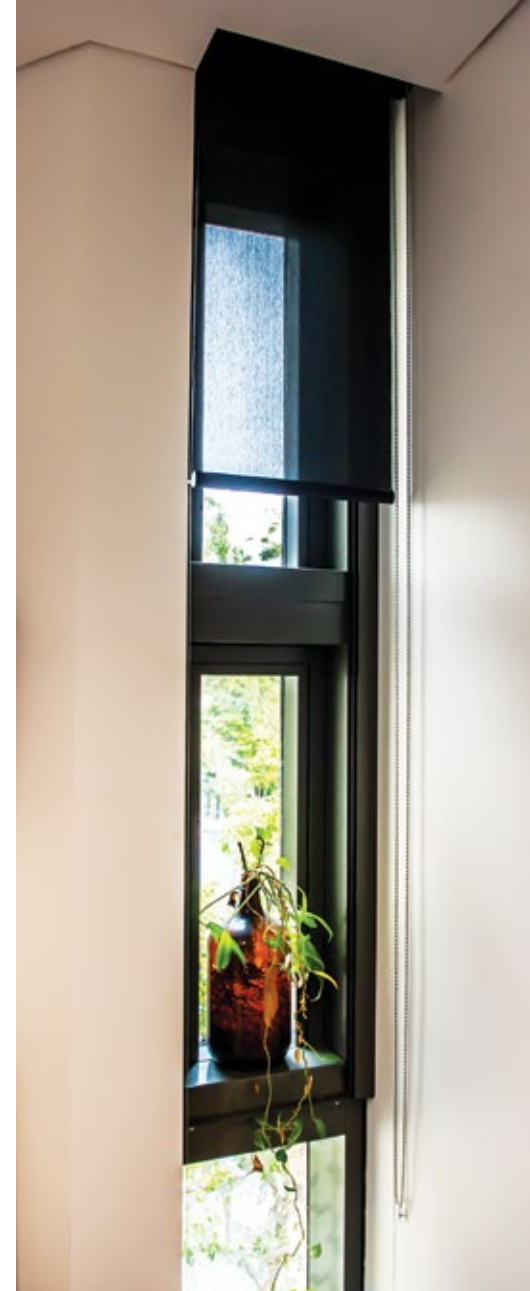
Auzmet Architectural used its computer's auto CAD program to reproduce the architect's design, and then sent the drawing to a router that machined the aluminium panel. Once it was machined, Auzmet Architectural's staff put brackets on the panel and folded the edges over to finish it off. It was then brought onsite and installed to the pre-measured frames. Auzmet Architectural also clad the sixth-floor roof area along the plant room, which is a mix of louvers, window frames and cladding.

Auzmet Architectural was founded three years ago and employs four office staff and ten tradesmen.

The external cladding provides a contemporary finish. It was a similar aesthetic outcome with a recently completed refurbishment project which Auzmet Architectural undertook in Eagle St in Brisbane's CBD. The circa 1980s AMP building had its concrete façade updated with Auzmet Architectural's modern grey and charcoal coloured aluminium composite cladding. Likewise, the building's lift lobbies were updated with aluminium cladding.



**For more information contact Auzmet Architectural,** 1/2 Ant Road, Yatala, QLD 4207, phone 07 3801 8911, mobile 0408 006 357, fax 07 3801 8933, email [sales@auzmet.com.au](mailto:sales@auzmet.com.au), website [www.auzmet.com.au](http://www.auzmet.com.au)



## SEEING BETTER THROUGH 101 BLINDS

**When KWA Blinds outfitted the Centre for Advanced Imaging in Brisbane, it was a designer fit.**

Altogether, KWA installed 101 roller blinds – both the sunscreen and block-out variety – creating a cooling environment with visual comfort and a dash of panache.

Made from a fabric called 'Extraview', as the name suggests, the blinds enable people inside the building to see outdoors relatively clearly.

Fitted in a black colour dubbed 'Midnight', the blinds not only create privacy, but reduce glare: the darker the blind shade, the less interior glare.

Sales manager Donna Russell said the blinds, made by Vertilux, were a mix of chain operated and motorised. She said, "automated blinds were becoming ever more affordable and more popular".

Most of the blinds installed were of the sunscreen variety. Block-out blinds were fitted in a double-blind configuration in rooms where projectors or light-based machines needed a dark environment to operate optimally.

KWA Blinds (trading name of Ken Wilson and Associates) was founded in 1994 in Brisbane by co-directors Ken and Sonya Wilson. They now employ 13 people and is expanding with projects in the works all over Queensland and expanding into other states. The expansion is through "reputation", according to Russell.

Recent fit-outs include the business tower at 123 Albert St – a new icon for Brisbane's CBD skyline, Santos Place and Brisbane Square, with current projects including Queensland Children's Hospital.

A crucial point of difference KWA Blinds brings to projects is the range of blind brands on offer. "We do not manufacture anything except curtain tracks," Russell explained. "All major blind brands are supplied. We can offer our clients the right solution based on budget and project requirements."

"There aren't too many companies who have a good relationship with all suppliers and can offer such a range."

**For more information contact KWA Blinds,** Unit 8, 26 Weippin St, Cleveland, QLD 4163, phone 07 3821 2555, fax 07 3821 2422, email [info@kwa.com.au](mailto:info@kwa.com.au), website [www.kwa.com.au](http://www.kwa.com.au)





## PLASTERBOARD WASTE RECYCLING

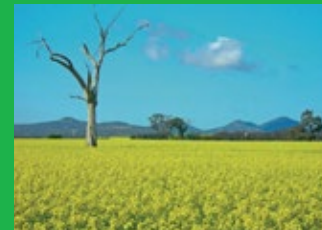
REGYP provides cost effective and sustainable plasterboard waste collection and disposal services to construction and demolition companies.

### REGYP offers:

- Solutions that can reduce your waste cost
- Collection options including truck pick-up and skip bins
- Green Star waste recycling reporting

### What REGYP recycles:

- Plasterboard and cornice products from all manufacturers
- Waste plasterboard from new construction and fit-out projects
- Plasterboard from demolition projects



**We service Sydney, Brisbane, Melbourne, Perth, Canberra**

**Ph** 1300 473 497

**Email** [info@regyp.com.au](mailto:info@regyp.com.au)

**Web** [www.regyp.com.au](http://www.regyp.com.au)

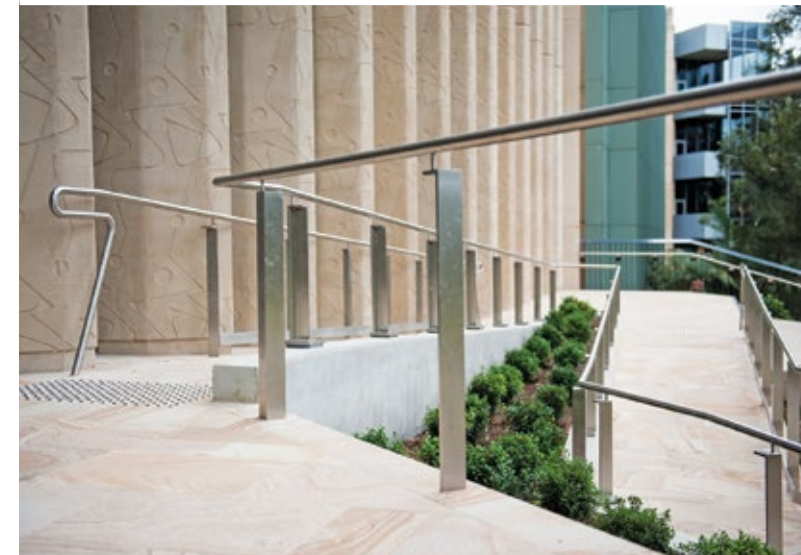
## SUPERFLOCC

SUPERFLOCC is a fine ground natural gypsum product suitable for the flocculation of clay from sediment dams. The solution grade gypsum is suitable for civil, industrial and agricultural applications. The gypsum can be mixed and applied to dams to reduce water turbidity, added to flood and drip irrigation systems and many other applications.

### Product Qualities:

The solution grade product is a natural high purity gypsum with a particle size distribution designed for easy dissolution in both irrigation & pumping systems. It is a quick acting flocculant & soil ameliorator for dissolution in water and displacement of sodium in the soil, giving a readily available calcium & sulphur source.

[www.gypsumsales.com.au](http://www.gypsumsales.com.au)



## SHEET METAL FROM A TO Z

A Sunshine Coast sheet metal company has built balustrades, benchtops and roof fittings for Queensland's Centre for Advanced Imaging Development.

The diverse range of products reflects what A2Z Sheetmetal is all about. A2Z Sheetmetal crafted various types of handrails and balustrades – including the main entrance heavy duty steel balustrade which was crane-lifted into position – as well as stainless steel laboratory benches and roof-top abseiling systems for cleaning windows.

The other balustrades included a designer aluminium grate construction and a variety of glass and stainless steel sections. A2Z has a number of commercial projects on the books with no job too small or large, and nearly 20 employees turn their hands and minds to anything metal and architect-designed.

“We work in brass, copper, gold if necessary, aluminium, steel,” Director Rob De Clara said. “We do a lot of architectural stuff at universities. These items cannot be purchased off the shop floor. It's handcrafted architectural metalwork.”

“The client or architect draws it, and we have to decide how to manufacture it to look the same and please all.”

*For more information contact A2Z Sheetmetal Pty Ltd, 1 Enterprise Street, Kunda Park, QLD, phone 07 5445 6164, fax 07 5445 6760, website [www.a2zsheetmetal.com.au](http://www.a2zsheetmetal.com.au)*

